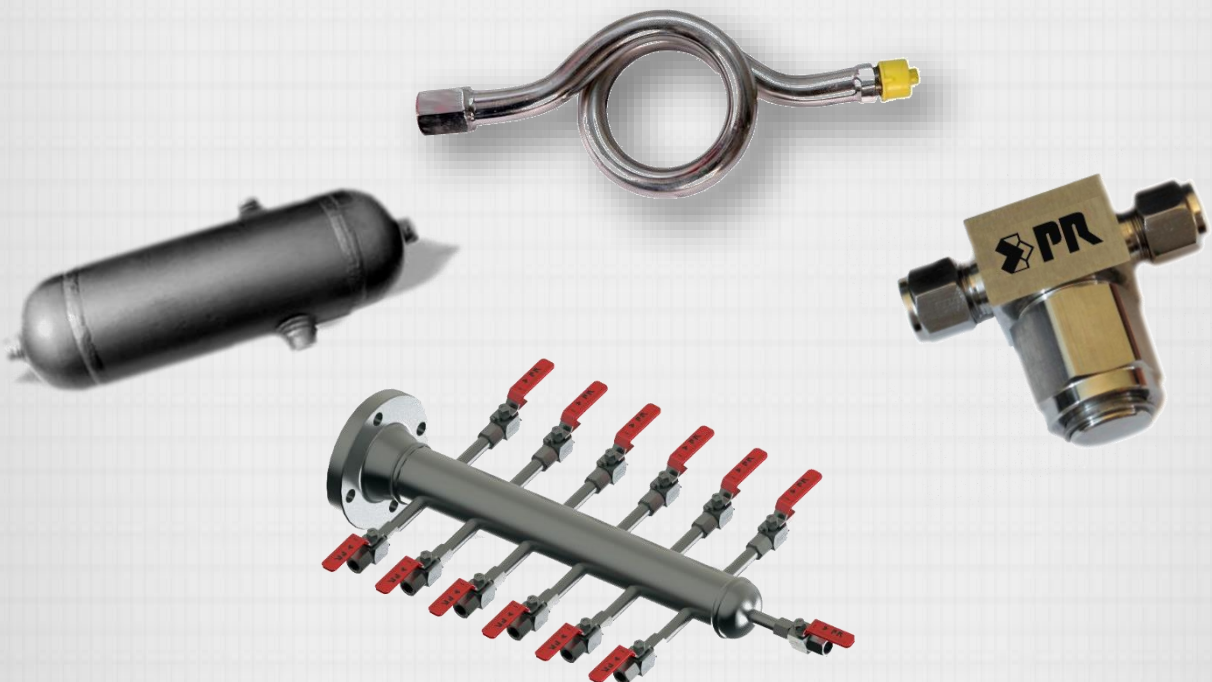


Special Instrument



PARS REGULATOR

Air Headers and Distribution Manifolds



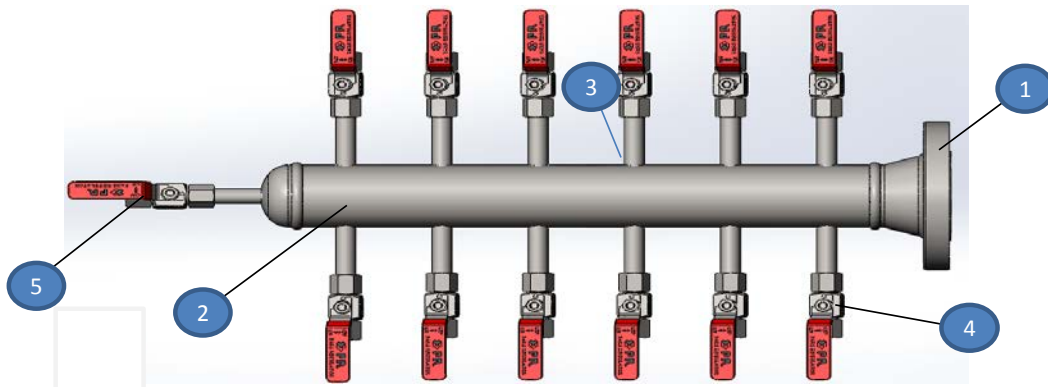
Air Manifold

Features

- Distribution lines available upon request
- Ball valve, needle valve available for distribution lines and drain port
- Variety of end connection available according & purchase order

End Connections

Part	Type	Size	Standard
Inlet Connection	Male NPT	1	ASME B 1.20.1
	Female NPT		
	Female BSP Tapered		BS 21
	Female BSP Parallel		
	Flange	Class 150, Class 300	ANSI B 16.5
Outlet Connection	Male NPT	1/4, 1/2	ASME B 1.20.1
	Female NPT		
	Fractional Tube Fitting	1/2	PR Tube Fitting
	Metric Tube Fitting	12 mm	
Drain Connection	Female NPT	1/4, 1/2	ASME B 1.20.1
	Male NPT		



Standard Material of Construction

item	component	Material /ASTM Specification	
		Stainless Steel/Carbon Steel	
1	Inlet Valve	BALL VALVE / NEEDLE VALVE STAINLESS STEEL	
	Flange	316L SS/A 182 & A105	
	Cap	316L SS/A240 & A234 WPB	
2	Main Line	316L SS/A 312 & A106-B	
3	Branch Pipe	316L SS/A 3122 & A106-B	
4	Distribution Valve	BALL VALVE / NEEDLE VALVE STAINLESS STEEL	
5	Drain Valve	BALL VALVE / NEEDLE VALVE STAINLESS STEEL	
	Plug	ASTM A105	316L SS/A276



Pars Regulator Co.

PARS REGULATOR

Condensate Pots



WWW.PARSREGULATOR.COM

Condensate Pots

condensate pots are designed to trap condensate and foreign matter that may accumulate in gaseous service lines, and prevent damage to the sensitive instrumentation components. They are also effective for providing a liquid seal on steam and corrosive line, widely used in refineries, power plants, chemical and petrochemical, steel plants and other process industries.

Features

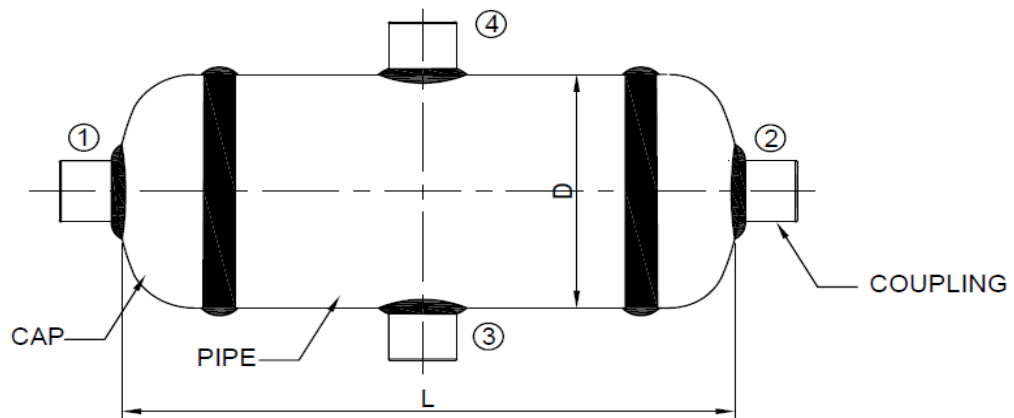
- Use as liquid or condensate traps, seal pots, vapor chambers and knockout pots.
- Chambers are made from seamless pipe and weld caps.
- Full-penetration gas tungsten arc -weld construction to ensure great strength and leak-tight performance.
- High and low pressure rating options.

Technical Data

- Socket weld connection as per ANSI B16.11
- NPT as per ANSI B1.20.1 taper pipe thread
- All pot are factory tested fully prior to shipment
- Standard material of construction: 31 6 SS, Carbon steel, ...
- Pipe schedule: 10,40, 80, 1 60, XXS seamless steel
- Variety of end connections available

Materials of Construction

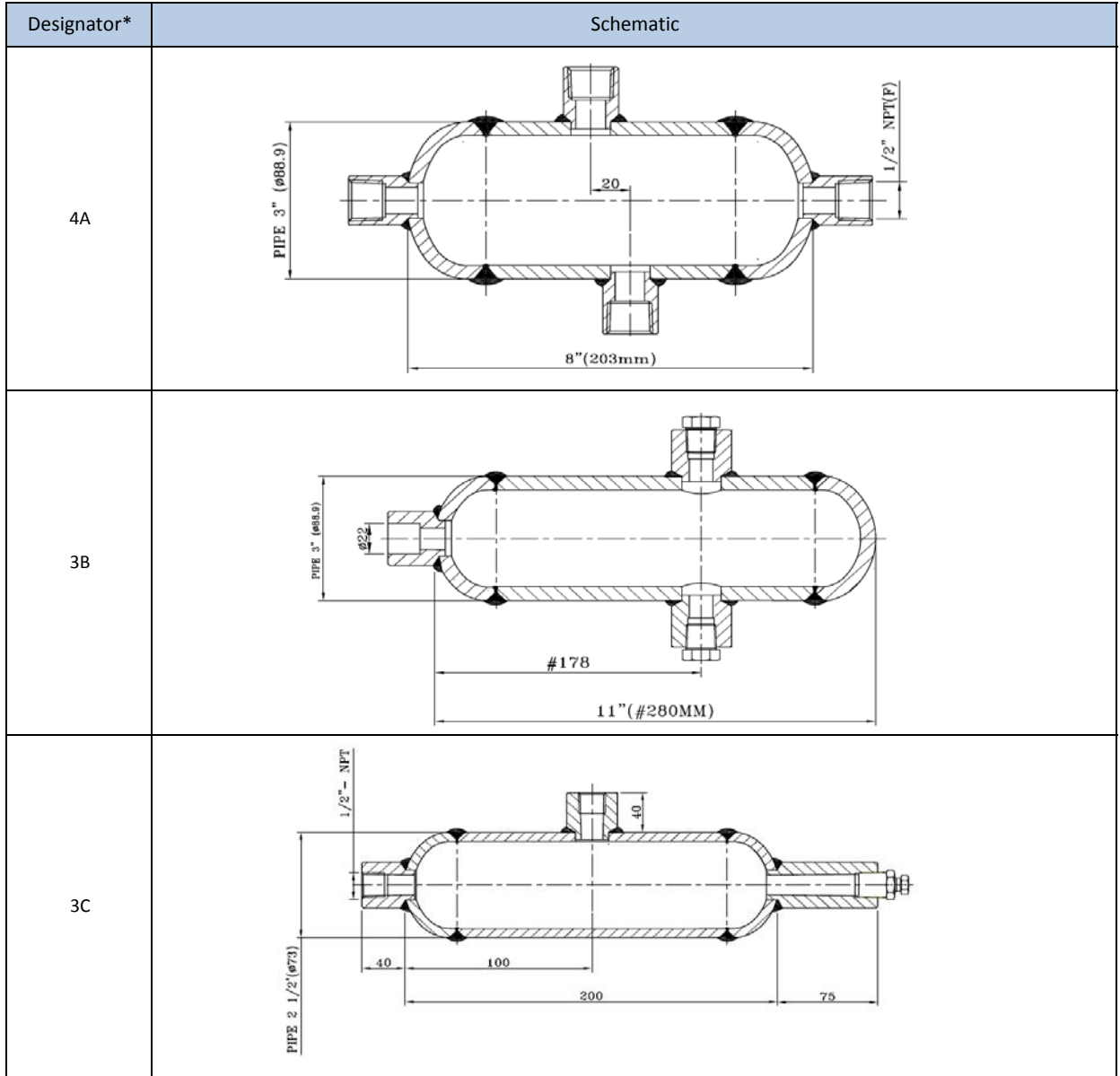
Material	Pipe	Cap	Coupling
321 SS	TP321/A312	321/A 240	321/A276
CS	A 106	A234 WPB	A105
316L SS	TP316L/A312	316L/A 240	316L/A276



info@parsregulator.com
Parsregulator@yahoo.com

www.parsregulator.com

Tel : 88 30 77 66
Fax: 88 83 41 40



c
o
n
d
e
n
s
a
t
e
p
o
t

6L - 3 40 - 3A - FNS 8 - FNS 14 - FRT 12

Body Material	Body O.D.	ANSI SCH
6L 316L SS	2.1/2" NPS 2.1/2	SCH 10
S1 321 SS	3 NPS 3	SCH 40
CS Carbon Steel	4 NPS 4	SCH 80
		SCH 160
		SCH XXS

Configuration	Connection 1 Type	Connection 1 Size	Connection 2 Type to 5 Type	Connection 2 Type to 5 size
4A	FNS Female NPT	2 1/8"	Same as Connection 1	
3B	FRT Female BSPT	4 1/4"	Specified in the Same Way as the Connection 1 Type and Size	
3C	PS Pipe Socket Weld	8 1/2" or 8 mm		
	PB Pipe Butt Weld	10 10 mm		
	FL Fractional Tube Fitting	12 3/4" or 12 mm		
	ML Metric Tube Fitting	14 14 mm		
		16 1" or 16 mm		

*Other Shape Could be Fabricated According to Purchase Order

PARS REGULATOR

Syphons Tube



WWW.PARSREGULATOR.COM

Syphons Tube

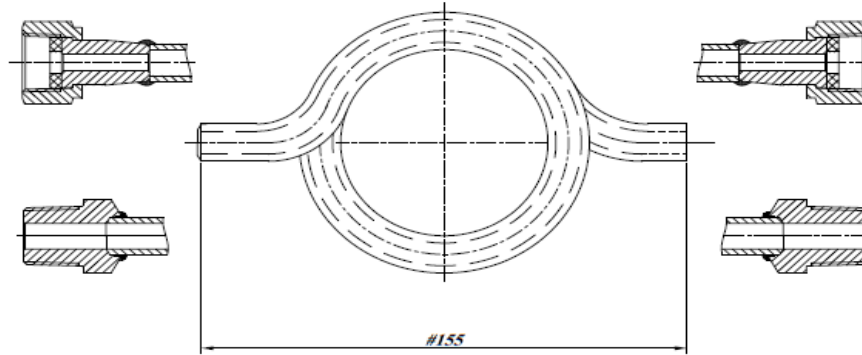
Dimensions

Features

- Maximum working temperature is 850°F (454°C).
- Maximum working pressure is 6000 psig (414 bar).
- Standard materials is SS316L

Ordering Information

Add the material designator as prefix to the basic ordering number (SS for 316 SS).



Component	Material Specifications
Tube	A269/A213 SS316L
Connector	A276 SS316L
Gasket	PTFE*

Type of connector
FEMALE x FEMALE
MALE x MALE
MALE x FEMALE

Type of thread	
1/2" NPT MALE	M20x1.5 MALE
1/2" NPT FEMALE	M20x1.5 FEMALE
1/2" BSPT MALE	
1/2" BSPT FEMALE	

Dimensions are in mm unless specified ,They could be change

* use in Female connection

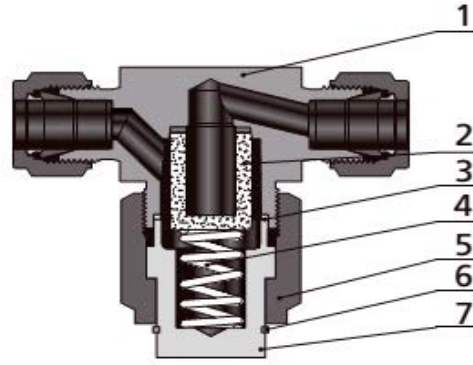


FILTER FITTING



WWW.PARSREGULATOR.COM

Filter



Standard Materials of Construction

Component		Material Grade/ASTM Specification
1	Body	316SS/A276
2	Element	Sintered 316 S.S
3	Gasket	316SS/A276
4	Spring	302SS/A313
5	Bonnet Nut	316SS/A276
6	Backup Ring	Stainless Steel
7	Bonnet Nut	316SS/A276

Filtration Definitions

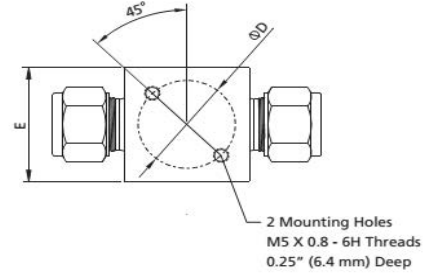
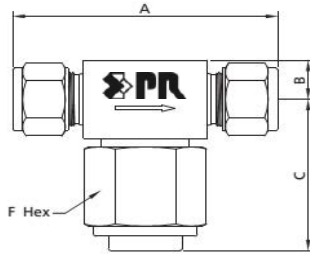
- Sintered element: metal powder is pressed in a die at sufficient pressure that the powder particles adhere at their contact points.
- Element nominal pore size: the element nominal pore size is normally calculated from the pressure required to cause air to bubble from the largest pore in the filter element when submerged in a test liquid.

Features

Tee-type Filter

- Filter element replaceable without removing body from system
- Union bonnet design
- Nominal pore sizes for sintered element: 0.5, 2, 7, 15, 40, 60 and 80 μm
- Maximum working pressure: 6000 psig (41.4 bar)
- Working temperature: -20°F to 900°F (-28°C to 482°C)
- Body materials: 316L SS, 304L SS
- Variety of end connections available

Dimensions
FT Series



Connection Type and Size		Element Series	FILTER Series	Dimension, in. (mm)					
Inlet	Outlet			A	B	C	D	E	F
1/8"	1/8"	4	4FT	2.27(57.7)	0.38(9.7)	1.49(37.8)	1(25.4)	1(25.4)	1(25.4)
1/4"	1/4"	4	4FT	2.47(62.7)					
3/8"	3/8"	8	8FT	2.84(72.1)	0.46(11.7)	1.74(44.2)	1.13(28.7)	1.13(28.7)	1 1/8(28.6)
1/2"	1/2"	8	8FT	3.04(77.2)					
6 mm	6 mm	4	4FT	2.46(62.5)	0.38(9.7)	1.49(37.8)	1(25.4)	1(25.4)	1(25.4)
8 mm	8 mm	8	8FT	2.84(72.1)					
10 mm	10 mm	8	8FT	2.86(72.6)	0.46(11.7)	1.74(44.2)	1.13(28.7)	1.13(28.7)	1 1/8(28.6)
12 mm	12 mm	8	8FT	3.04(77.2)					
1/8" NPTF	1/8" NPTF	4	4FT	2.00(50.8)	0.38(9.7)	1.74(44.2)	1.13(28.7)	1.13(28.7)	1(25.4)
1/4" NPTF	1/4" NPTF	4	4FT	2.13(54.1)					
1/4" NPTM	1/4" NPTM	4	4FT		0.46(11.7)	1.74(44.2)	1.13(28.7)	1.13(28.7)	1 1/8(28.6)
3/8" NPTM	3/8" NPTM	8	8FT	2.38(60.5)					
1/2" NPTM	1/2" NPTM	8	8FT	2.75(69.9)					

F I L T E R F I T T I N G

Elements

Nominal Pore Size µm	Pore Size Range µm	Element Type
0.5	0.5 TO 2	Sintered
2	1 TO 4	
7	5 TO 10	
15	11 TO 25	
40	35 TO 53	
60	50 TO 75	
80	70 TO 95	

All dimensions could be considered as reference.

Filters Part Number Description

PR SS - FL 4 - FL 4 - S - P 40

Body Material	Intel Type	Intel Size	Outlet Type	Outlet Size	Element Type	Gasket Material	Element Nominal Pore Size
---------------	------------	------------	-------------	-------------	--------------	-----------------	---------------------------

6L	316L SS	FNS	female NPT	2.	1/8"	SAME AS INLET	S	Sintered	p	Silvered-plated 316 SS	05	0.5 μm
4L	304L SS	NS	Male NPT	4	1/4"	Specified in the same way as the inlet type and size					2	2 μm
S1	321 SS	FRT	Female BSPT	6	3/8" or 6 mm		7	7 μm				
		RT	Male BSPT	8	1/2" or 8 mm		15	15 μm				
		FL	Fractional Tube Fittng	10	10 mm		40	40 μm				
		ML	Metric Tube Fittng	12	3/4" or 12mm		60	60 μm				
				14	14 mm or M14 * 1.5		80	80 μm				
16	1" or 16 mm			100	100 μm							
18	18 mm	150	150 μm									
20	1 1/4" or 20 mm or M20 * 1.5	250	250 μm									
22	22 mm or M22 * 1.5	450	450 μm									
25	25 mm											

F I L T E R F I T T I N G

Special Instrument

Head Office: Unit 4, 2nd. Floor, No. 46, Karimkhan St., Tehran - Iran

Tel: (+98-21) 88 30 77 66 Fax: (+98-21) 88 83 41 40

**Emails: info@parsregulator.com
parsregulator@yahoo.com**

