

PARS REGULATOR

PARS REGULATOR

Instrument Valves

PARS REGULATOR



www.parsregulator.com

WWW.PARSREGULATOR.COM

BALL VALVE

PR HPBV Series Ball Valve

PR HPBV ball valve is designed for a range of media up to 6,000 psi. Its internally loaded blow-out proof¹ stem and floating ball² for positive shut-off along with its other features offer a robust, compact and easy to operate valve solution. PR HPBV ball valve available in 1/4" thru 1" NPT, SW and tube connections. Please consult factory for additional material options and/or end connections.

DESIGN FEATURES

- Compact design
- High flow rate with maximum orifice (10.0mm to 15.0mm)
- Female & male NPT, SW sizes 1/4", 3/8", 1/2", 3/4", 1" AND tube connection included 1/4", 3/8", 1/2", 3/4", 1", 6mm, 8mm, 10mm, 12mm, 16mm, 20mm & 25mm.
- Internally loaded blow-out proof stem.
- Floating ball for positive shut-off.
- Low operating torque.
- SS 316 to NACE MR-01-75/ISO 15156
- Full material traceability
- Special High Tolerance Connections.

TYPICAL APPLICATIONS

- Controls & instrumentation isolation and venting
- Hydrocarbon Gas & Liquid service
- Hydraulic applications
- Wellhead Control Panels
- Chemical Injection Skids
- Utility services

Testing

- Each valve is tested with nitrogen at 1000 psig (69 bar) to maximum allowable leak rate of 0.1 SCCM³.
- Hydrostatic shell test is performed at 1.5 times of the working pressure according to API 6D.
- Hydrostatic seat test is performed at 1.1 times of the working pressure according to API 6D.

1. A stem with a shoulder to avoid blowing out under certain operating conditions.

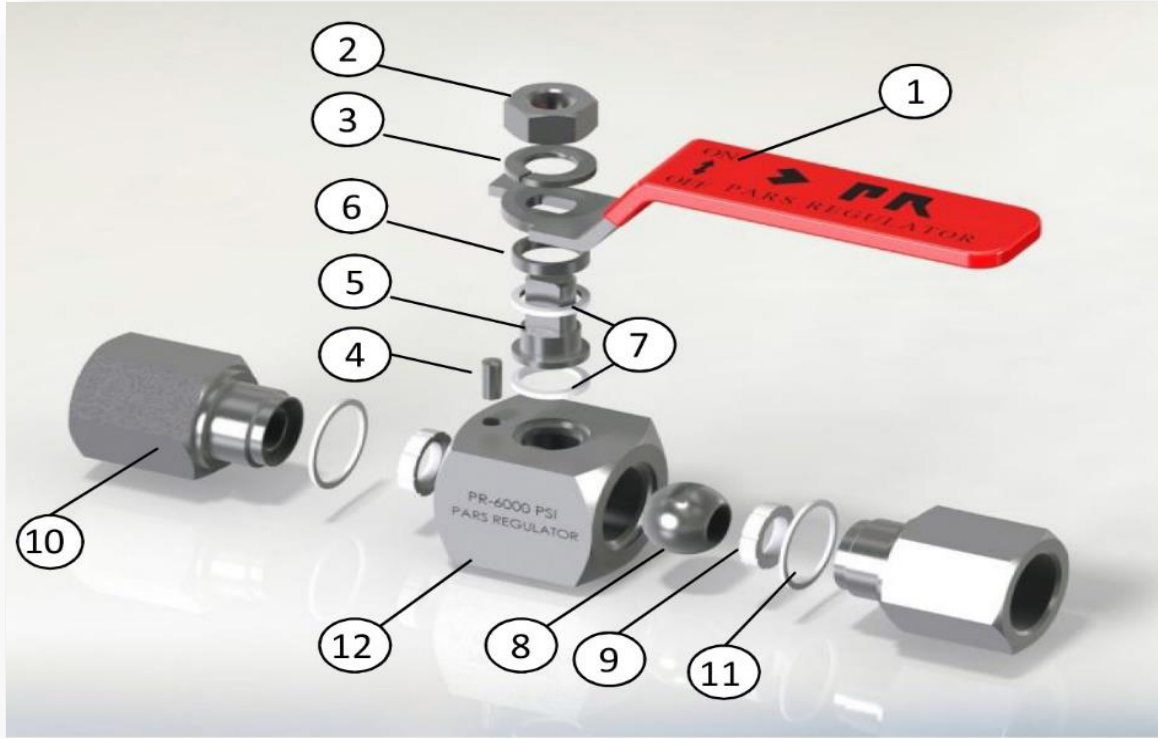
2. A ball valve that has a floating ball closure member.

3. SCCM:

Standard cubic centimeter per minute (^{cc}/_{min})

BALL VALVE

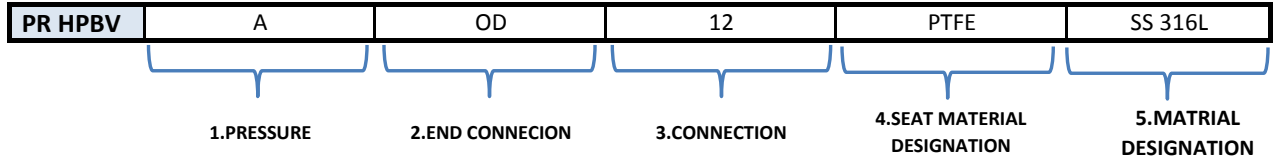
Material of Construction



No	Component	Material Grade /ASTM SPECIFICATION
		Stainless Steel
1	Handle	Stainless Steel Lever Handle with PVC color Coated
2	Lock Nut	Stainless Steel
3	Spring Washer	
4	Pin	
5	Stem	SS316L
6	Stem Washer	SS316L
7	Stem Packing	PTFE
8	Ball	SS316/CF3M
9	Seat	PTFE(Standard)
10	End Connector	SS316L
11	Connector Seal	PTFE
12	Body	SS316L

BALL VALVE

ORDERING INFORMATION



1. PRESSURE

- A: 3,000 psi
- B: 6,000 psi

2. END CONNECTION¹

- OD: TUBE FITTING
- FF: FEMALE THREAD
- FM: FEMALE/ MALE THREAD
- SW: SOCKET WELD

3. CONNECTION SIZE

TUBE OD(mm)	6	8	10	12	16	18	20	25
DESIGNATION	6mm	8mm	10mm	12mm	16mm	18mm	20mm	25mm

TUBE OD(inch)	1/4"	3/8"	1/2"	3/4"	1"
DESIGNATION	4P	6P	8P	12P	16P

NPT F.F. (inch)	1/4"	3/8"	1/2"	3/4"	1"
DESIGNATION	4F	6F	8F	12F	16F

NPT M.F. (inch)	1/4"	3/8"	1/2"	3/4"	1"
DESIGNATION	4FM	6FM	8FM	12FM	16FM

SOCKET WELD(inch)	1/4"	3/8"	1/2"	3/4"	1"
DESIGNATION	4SW	6SW	8SW	12SW	16SW

4. SEAT MATERIAL DESIGNATOR

- PTFE

5. MATERIAL DESIGNATOR

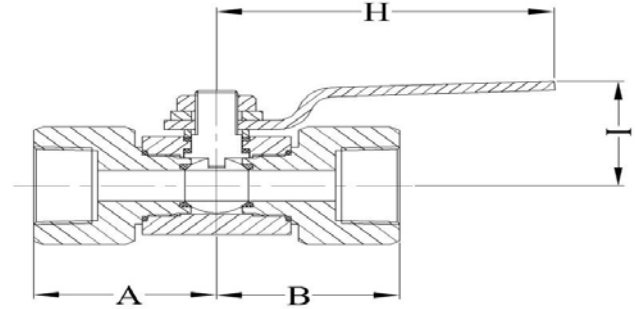
- SS 316L
- SS 304
- SS 321

^[1] . all combination of increaser/reducer of BW , SW , OD outlet/inlet are available upon purchase order

BALL VALVE

HPBV SERIES

NPT F.F (FEMALE PIPE THREAD END CONNECTIONS)



3000								
Order Number		Orifice (mm)	CV	End Connection	Dimensions (mm)			
Series	Part No.				A	B	I	H
HPBVA	4F	10	7.5	1/4 Female NPT	46	46	43	105
	6F		7.5	3/8 Female NPT	46	46	43	105
	8F		7.5	1/2 Female NPT	46	46	43	105
	12F		7.5	3/4 Female NPT	46	46	43	105
	16F	15	24	1 Female NPT	59	59	54	155

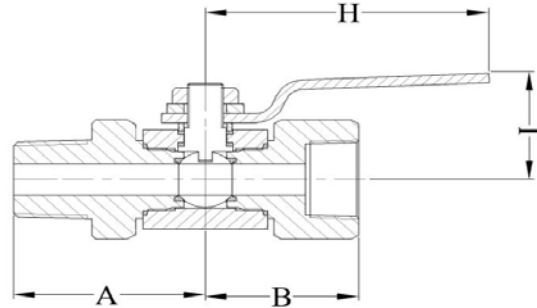
6000								
Order Number		Orifice (mm)	CV	End Connection	Dimensions (mm)			
Series	Part No.				A	B	I	H
HPBVB	4F	10	7.5	1/4 Female NPT	46	46	43	105
	6F		7.5	3/8 Female NPT	46	46	43	105
	8F		7.5	1/2 Female NPT	46	46	43	105
	12F	15	24	3/4 Female NPT	59	59	54	155
	16F		24	1 Female NPT	59	59	54	155

*All dimensions could be considered as reference.

BALL VALVE

HPBV SERIES

NPT F.M(FEMALE& MALE PIPE THREAD END CONNECTIONS)



3000								
Order Number		Orifice (mm)	CV	End Connection	Dimensions (mm)			
Series	Part No.				A	B	I	H
HPBVA	4FM	10	7.5	1/4 Female*Male NPT	46	46	42	105
	6FM		7.5	3/8 Female*Male NPT	46	48	42	105
	8FM		7.5	1/2 Female*Male NPT	46	48	42	105
	12FM		7.5	3/4 Female*Male NPT	48	48	42	105
	16FM	15	24	1 Female*Male NPT	59	59	54	155

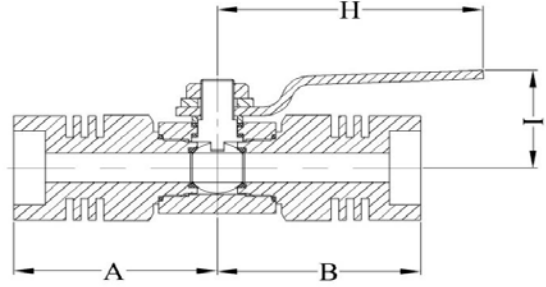
6000								
Order Number		Orifice (mm)	CV	End Connection	Dimensions (mm)			
Series	Part No.				A	B	I	H
HPBVB	4FM	10	7.5	1/4 Female*Male NPT	46	46	43	105
	6FM		7.5	3/8 Female*Male NPT	46	46	43	105
	8FM		7.5	1/2 Female*Male NPT	46	46	43	105
	12FM	15	24	3/4 Female*Male NPT	59	59	54	155
	16FM		24	1 Female*Male NPT	59	59	54	155

*All dimensions could be considered as reference.

BALL VALVE

HPBV SERIES

SW(SOCKET WELD END CONNECTIONS)



3000								
Order Number		Orifice (mm)	CV	End Connection	Dimensions (mm)			
Series	Part No.				A	B	I	H
HPBVA	4S	10	7.5	1/4 SW	62	62	43	105
	6S		7.5	3/8 SW	62	62	43	105
	8S		7.5	1/2 SW	62	62	43	105
	12S		7.5	3/4 SW	62	62	43	105
	16S	15	24	1 SW	79	79	54	155

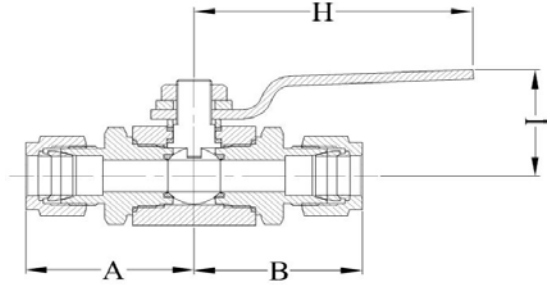
6000								
Order Number		Orifice (mm)	CV	End Connection	Dimensions (mm)			
Series	Part No.				A	B	I	H
HPBVB	4S	10	7.5	1/4 SW	62	62	43	105
	6S		7.5	3/8 SW	62	62	43	105
	8S		7.5	1/2 SW	62	62	43	105
	12S	15	24	3/4 SW	79	79	54	155
	16S		24	1 SW	79	79	54	155

*All dimensions could be considered as reference.

BALL VALVE

HPBV SERIES

OD (TUBE END CONNECTIONS)



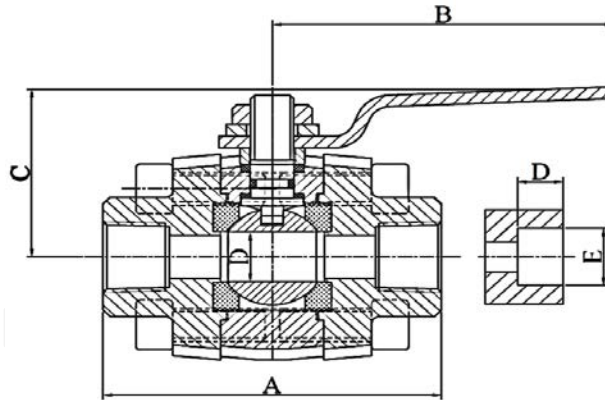
3000								
Order Number		Orifice (mm)	CV	End Connection	Dimensions (mm)			
Series	Part No.				A	B	I	H
HPBVA	1/4 OD	10	1.2	1/4 OD	43	43	43	105
	3/8 OD		3.7	3/8 OD	45	45	43	105
	1/2 OD		7.5	1/2 OD	48	48	43	105
	3/4 OD		7.5	3/4 OD	50	50	43	105
	1 OD	15	24	1 OD	55	55	54	155
	6 OD	10	1.2	6 OD	43	43	43	105
	8 OD		3.7	8 OD	45	45	43	105
	10 OD		7.5	10 OD	48	48	43	105
12 OD	7.5		12 OD	50	50	43	105	

6000								
Order Number		Orifice (mm)	CV	End Connection	Dimensions (mm)			
Series	Part No.				A	B	I	H
HPBVB	1/4 OD	10	1.2	1/4 OD	43	43	43	105
	3/8 OD		3.7	3/8 OD	45	45	43	105
	1/2 OD		7.5	1/2 OD	48	48	43	105
	3/4 OD	15	7.5	3/4 OD	50	50	54	155
	1 OD		24	1 OD	55	55	54	155
	6 OD	10	1.2	6 OD	43	43	43	105
	8 OD		3.7	8 OD	45	45	43	105
	10 OD		7.5	10 OD	48	48	43	105
	12 OD		7.5	12 OD	50	50	54	155

*All dimensions could be considered as reference.

COMPACT BALL VALVE

CL 800 & 1500



Features and Applications

- Socket Welding & threaded ends
- Socket welding dimension :ANSI B 16.11
- Screw end dimension: ANSI B 1.20.1(NPT)
- Design & manufacture : ANSI B 16.34
- Inspect and test: API 598
- Body material: A105,F304L,F316L
- all dimensions shown are for reference and subject to change without prior notice.

CLASS 800

	REDUCER BORE	-		1/2"		3/4"		1"		1 -1/4"		1-1/2"		2"		-	
		FULL BORE		1/4"		3/8"		1/2"		3/4"		1"		1-1/4"		1-1/2"	
		mm	in	mm	in	mm	in	mm	in	mm	in	mm	in	mm	in	mm	in
End to End	A	75	2.95	75	2.95	75	2.95	87	3.42	110	4.33	120	4.72	140	5.51	160	6.29
Lever	B	155	6.1	155	6.1	155	6.1	155	6.1	170	6.69	230	9.05	230	9.05	310	12.2
Center to Top	C	72	2.83	72	2.83	76	2.99	98	3.86	100	3.94	120	4.72	130	5.12	150	5.9
Ball Bore	D	10	0.39	10	0.39	14	0.55	19	0.75	25	0.98	32.5	1.29	38	1.5	51	2

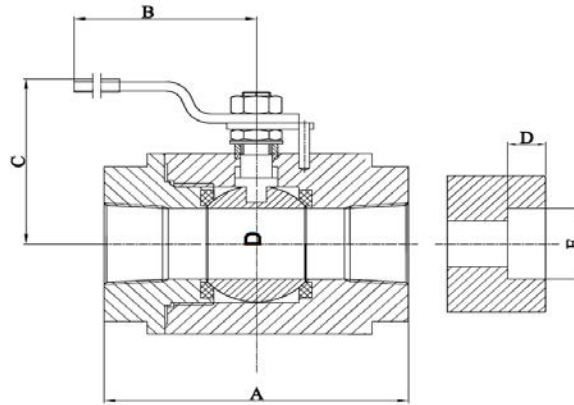
CLASS 1500

	REDUCER BORE	-		1/2"		3/4"		1"		1 -1/4"		1-1/2"		2"		-	
		FULL BORE		1/4"		3/8"		1/2"		3/4"		1"		1-1/4"		1-1/2"	
		mm	in	mm	in	mm	in	mm	in	mm	in	mm	in	mm	in	mm	in
End to End	A	75	2.95	75	2.95	87	3.42	110	4.33	120	4.75	140	5.51	160	6.3	200	7.87
Lever	B	155	6.1	155	6.1	170	6.69	170	6.69	230	9.05	230	9.05	310	12.2	400	15.8
Center to Top	C	76	2.99	76	2.99	91	3.58	96	3.86	119	4.68	124	4.88	147	5.79	168	6.61
Ball Bore	D	10	0.39	10	0.39	14	0.55	19	0.75	25	0.98	32.5	1.28	38	1.5	51	2

	SOCKET WELD DIMENTION	6		10		15		20		25		32		40		50	
		1/4		3/8		1/2		3/4		1		1-1/4		1-1/2		2	
		mm	in	mm	in	mm	in	mm	in	mm	in	mm	in	mm	in	mm	in
	D	11	0.44	11	0.44	12.7	0.5	14.5	0.57	16	0.63	75.5	0.69	19	0.75	22	0.86
	E	14.2	0.56	17.6	0.69	21.8	0.86	27	1.07	33.9	1.33	42.7	1.68	48.8	1.92	61.2	2.4

TWO PIECES BALL VALVE

CL 800 & 1500



Features and Applications

- Socket Welding & threaded ends
- Socket welding dimension :ANSI B 16.11
- Screw end dimension: ANSI B 1.20.1(NPT)
- Design & manufacture : ANSI B 16.34
- Inspect and test: API 598
- Body material: A105,F304L,F316L
- all dimensions shown are for reference and subject to change without prior notice.

CLASS 800

	REDUCER BORE	-		1/2"		3/4"		1"		1 -1/4"		1-1/2"		2"		-	
		FULL BORE		1/4"		3/8"		1/2"		3/4"		1"		1-1/4"		1-1/2"	
		mm	in	mm	in	mm	in	mm	in	mm	in	mm	in	mm	in	mm	in
End to End	A	75	2.95	75	2.95	87	3.42	105	4.13	120	4.72	130	5.11	140	5.51	170	6.69
Lever	B	155	6.1	155	6.1	155	6.1	170	6.69	170	6.69	230	9.05	230	9.05	310	12.2
Center to Top	C	74	2.91	74	2.91	76	2.99	98	3.86	100	3.94	120	4.72	124	4.88	150	5.9
Ball Bore	D	10	0.39	10	0.39	14	0.55	19	0.75	25	0.98	32.5	1.29	38	1.5	51	2

CLASS 1500

	REDUCER BORE	-		1/2"		3/4"		1"		1 -1/4"		1-1/2"		2"		-	
		FULL BORE		1/4"		3/8"		1/2"		3/4"		1"		1-1/4"		1-1/2"	
		mm	in	mm	in	mm	in	mm	in	mm	in	mm	in	mm	in	mm	in
End to End	A	80	3.15	80	3.15	85	3.34	110	4.33	120	4.75	140	5.51	160	6.3	200	7.87
Lever	B	155	6.1	155	6.1	170	6.69	170	6.69	230	9.05	230	9.05	310	12.2	400	15.8
Center to Top	C	76	2.99	76	2.99	91	3.58	96	3.86	119	4.68	124	4.88	147	5.79	168	6.61
Ball Bore	D	10	0.39	10	0.39	14	0.55	19	0.75	25	0.98	32.5	1.28	38	1.5	51	2

	SOCKET WELD DIMENTION	6		10		15		20		25		32		40		50	
		1/4		3/8		1/2		3/4		1		1-1/4		1-1/2		2	
		mm	in	mm	in	mm	in	mm	in	mm	in	mm	in	mm	in	mm	in
	D	11	0.44	11	0.44	12.7	0.5	14.5	0.57	16	0.63	75.5	0.69	19	0.75	22	0.86
	E	14.2	0.56	17.6	0.69	21.8	0.86	27	1.07	33.9	1.33	42.7	1.68	48.8	1.92	61.2	2.4

BLOCK & BLEED VALVE

High Technology Valve & Fitting Series

info@parsregulator.com
E_MAIL : parsregulator@yahoo.com

www.parsregulator.com

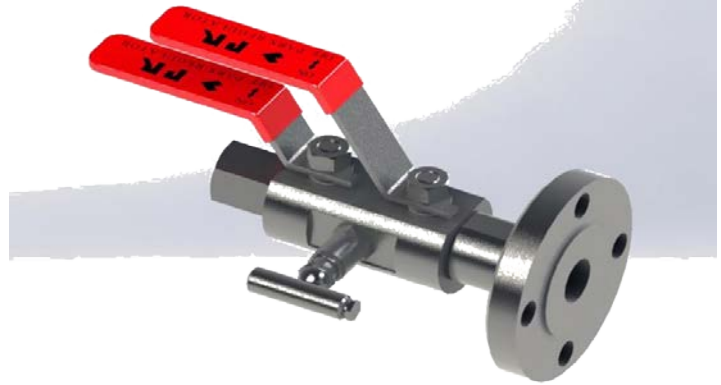
Tel : 88 30 77 66
Fax: 88 83 41 40



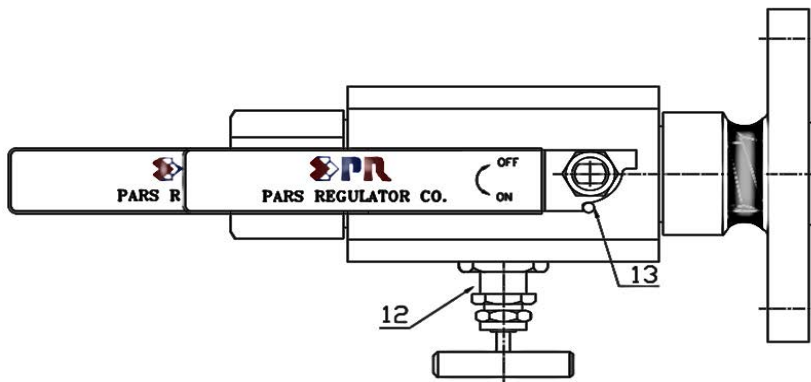
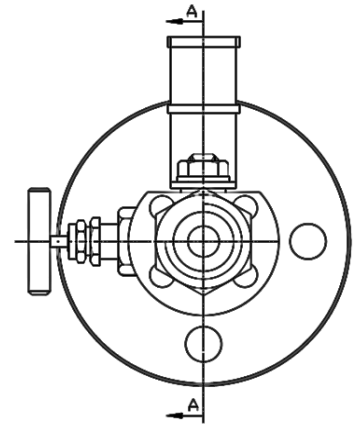
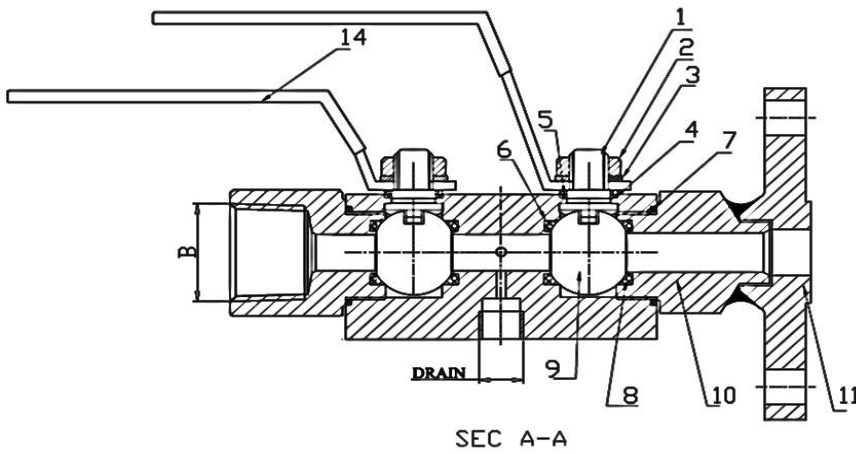
High Technology Valve & Fitting Series

PR-DB-D11-RB-F12R2-P-SS

- Reduced or full port
- Construction :B.B & W.B , OS & Y
- Socket Welding & Threaded ends
- Material for hard trim is Depend on Client notice & oprating condition
- B.B : BOLTED BONNET
- W.B : WELDED BONNET



- 1: STEM
- 2: NUT
- 3: WASHER
- 4: SEAL WASHER
- 5: RING
- 6: SEAT WASHER
- 7: BODY CAP WASHER
- 8: SEAT
- 9: BALL
- 10: BODY CAP
- 11: FLANGE
- 12: NEEDLE VALVE
- 13: PIN



E_MAIL : info@parsregulator.com
parsregulator@yahoo.com

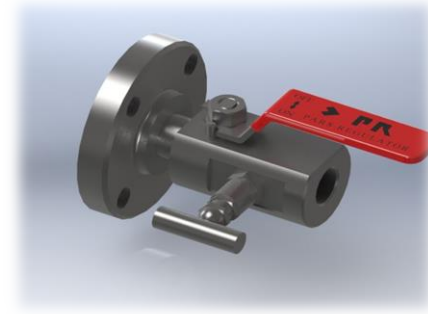
www.parsregulator.com

Tel : 88 30 77 66
Fax: 88 83 41 40

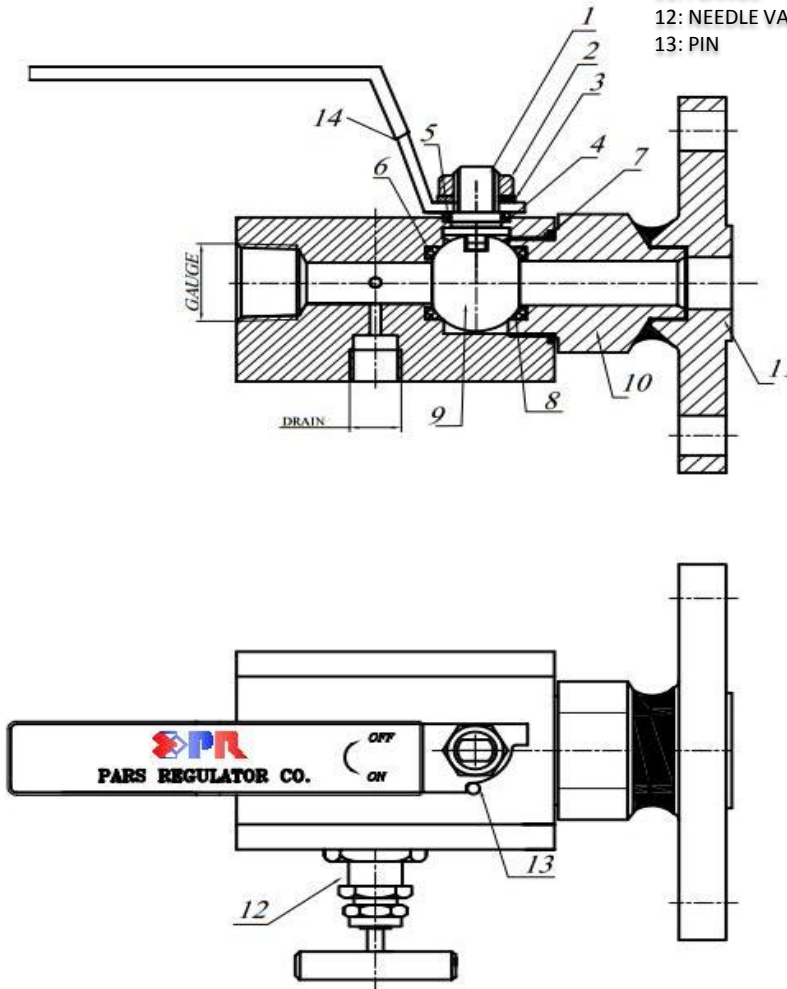
High Technology Valve & Fitting Series

PR-SB-S11-RB-F12R2-P-SS

- Reduced or full port
- Construction :B.B & W.B , OS & Y
- Socket Welding & Threaded ends
- Material for hard trim is Depend on Client notice & oprating condition
- B.B : BOLTED BONNET
- W.B : WELDED BONNET



- 1: STEM
- 2: NUT
- 3: WASHER
- 4: SEAL WASHER
- 5: RING
- 6: SEAT WASHER
- 7: BODY CAP WASHER
- 8: BODY
- 9: BALL
- 10: BODY CAP
- 11: FLANGE
- 12: NEEDLE VALVE
- 13: PIN



Ordering Information

Example-1): PR -DB-D11 - F 8 R1 N 8 - PE -SS
1 3 4 5 3 4 6 7

Example-2): PR -DB-D11 - FB - F 8 R3- PE -SS
1 2 3 4 5 6 7

1. VALVE SERIES

SERIES IDENTIFY			1ts ISOLATE	2ts ISOLATE	VENT
SB	SINGLE BLOCK & BLEED VALVES	S1	BALL	-	NEEDLE
					OS & Y
					BALL
		S2	OS & Y		
			NEEDLE		
			NEEDLE		
DB	DOUBLE BLOCK & BLEED VALVES	D1	BALL	BALL	NEEDLE
					OS & Y
					BALL
					NEEDLE
					NEEDLE
					NEEDLE
		D2	OS & Y		OS & Y
					NEEDLE
					NEEDLE
					NEEDLE

2. Bore size (mm)

(STD) - 10mm (standard)
 15- 15mm
 RB- Reducer Bore
 FB- Full Bore

3. Connection type

F- RAISED FACE FLANGE
 J- RING JOINT FLANGE
 N- FEMAIL NPT
 M- MALE NPT
 FF- FLAT FACE FLANGE
 BW- BUTT WELD

4. Connection size (inch)

4- 1/4" 16- 1"
 6- 3/8" 24- 1.1/2"
 8- 1/2" 32- 2"
 12- 3/4"

5. Flange rating (class)

R1- 150 R4- 900
 R2- 300 R5- 1500
 R3- 600 R6- 2500

6. Ball seat material

RP- R.PTFE
 P- PTFE

7. Body material

SS- ASTM A182 GR 316L
 105- ASTM A105
 LF2- ASTM A350 LF2



Pars Regulator Co.

Switching Valve 2-Way & 3-Way



WWW.PARSREGULATOR.COM

Features

- Simple design with one piece body
- Tight and smooth, low torque and easy operation
- One-piece ball stem
- Panel mountable
- Variety of End Connections
- Straight, Angle and 3-Way flow patterns
- Each and every valve is tested at the factory



Specifications

Pressure rating	3000psig (206 bar)@ 70 F° (21C°)
Temperature rating	50 to 150 F° (10 to 65) With PTFE seat and packing
Body material	316 stainless steel
Port Connections	1/16" to 3/4" and 3mm to 12 mm
Orifice	0.052" and 0.406" (1.3 mm to 10.3 mm)

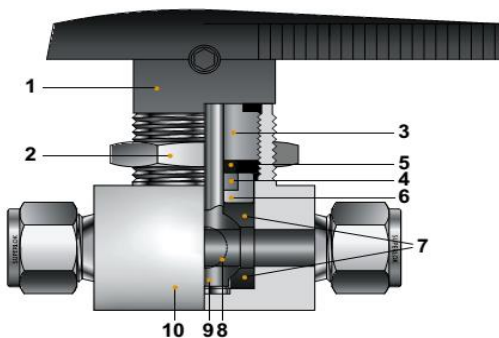
Testing

- Each Valve is tested with nitrogen at 1000psig(69bar) to maximum allowable leak rate of 0.1 SCCM.

Packing Adjustment

- Valves are adjusted for factory testing at 1000psig(69bar). ■ Packing must be readjusted for service at higher pressures.

Materials of Construction



No.	Component	Material Grade / ASTM Specification
		Stainless Steel
1	Handle	Zinc
	Set Screw	Stainless Steel
2	Panel Nut	Stainless Steel
3	Packing Bolt	SS316/A276
*4	Packing	PTFE
5	Upper Packing Gland	SS316L/A276
6	Lower Packing Gland	
*7	Upper&Lower Ball Seal	PTFE
*8	Side Disc	SS316L-Sintered
	Side Ring	
*9	Ball Stem	SS316L/A276
*10	Body	SS316L/A276

* Wetted components are marked "*"

info@parsregulator.com
parsregulator@yahoo.com

www.parsregulator.com

Tel : 88 30 77 66
Fax: 88 83 41 40

2-Way(On - Off Valve)

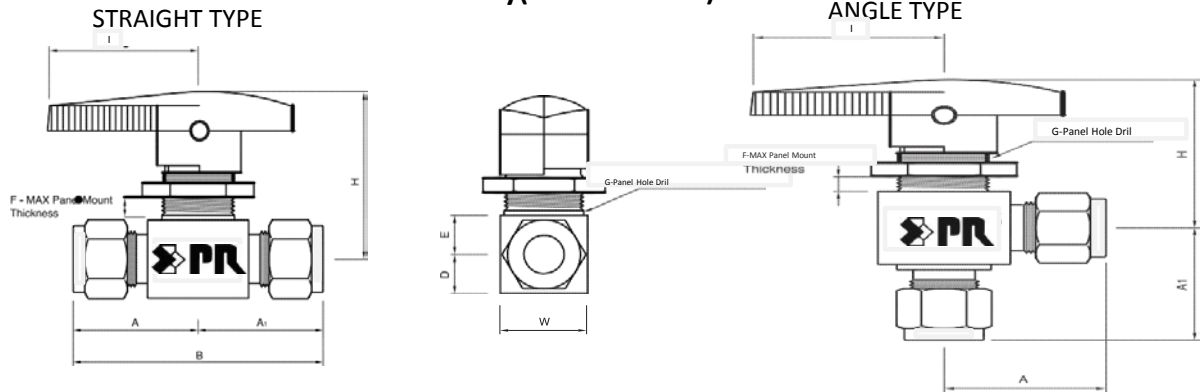


Table of dimensions

Order Number		Orifice	Cv	End Connections		Dimensions (mm)										
Series	Part No.			Inlet	Outlet	A	A1	B	D	E	F	G	H	I	W	
PRBV120H1	S	1	1.3	0.1	1/16" PR	21.3	21.3	42.6	7.1	8.7	6.4	15	36	29	15	
	S	3M	2.4	0.2	3 mm PR	25.4	25.4	50.8								
	S	2		0.2	1/8" PR											
	F	2N	3.2	0.5	1/8" FEMALE NPT	20.6	20.6	41.2								
	S	6M		0.6	6 mm PR	27.7	27.7	55.4								
	S	4		0.6	1/4" PR											
PRBV120H2	F	2N	4.8	1.2	1/8" FEMALE NPT	25.4	25.4	50.8	9.4	11.2	4.8	19.8	43.7	38.5	19.8	
	F	4N		0.9	1/4" FEMALE NPT	26.2	26.2	52.4								
	F	4R		0.9	1/4" ISO FEMALE											
	M	4N		1.2	1/4" MALE NPT	25.4	25.4	50.8								
	MS	4N-4		1.6	1/4" MALE NPT	1/4" PR	25.4	30.2								55.6
	S	6M		2.4	6 PR		30.2	30.2								60.4
	S	4		2.4	1/4" PR											
	S	8M		1.5	8 PR		31	31								62
	S	6		1.5	3/8" PR		32.5	32.5								65
PRBV120H3	F	4N	7.1	3	1/4"	31.8	31.8	63.6	14.20	14.20	9.40	28.50	56.10	51.00	28.50	
	F	6N		2.6	3/8"											
	F	6R		2.6	3/8"											
	S	6		6	3/8"	38.9	38.9	77.8								
	S	10M		6	10											
PRBV120H4	F	8N	10.3	6.3	1/2" FEMALE NPT	39.6	39.6	79.2	17.50	17.50	9.40	38.10	71.80	75.00	75.00	
	F	8R		6.3	1/2" ISO FEMALE											
	S	12M		12	12 mm	50	50	100								
	S	8		12	1/2 PR											
	S	12		6.4	3/4" PR											

2 - Way & 3 - Way

* Dimensions shown with PARS REGULATOR nuts measure in the finger-tight, where applicable.

* All dimensions could be considered as reference.

3-Way(Switching Valve)

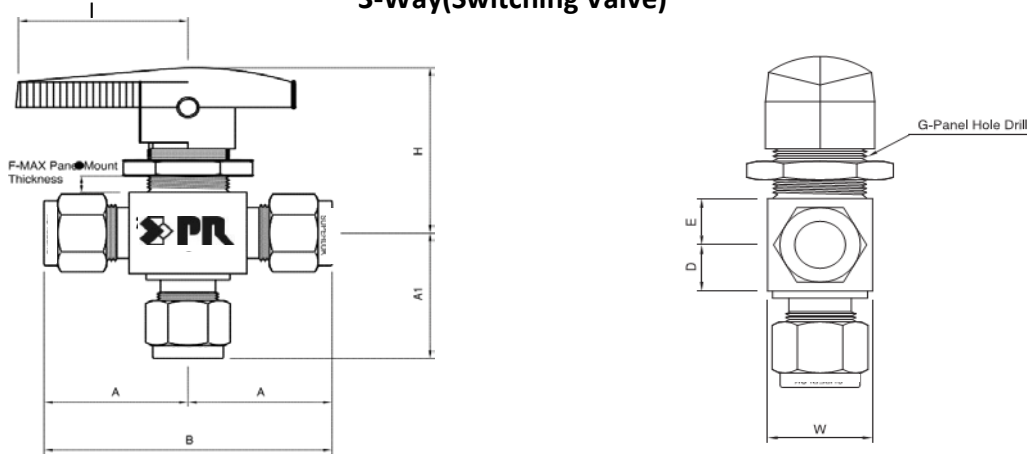


Table of dimensions

Order Number		Orifice	Cv	End Connections		Dimensions (mm)										
Series	Part No.			Inlet	Outlet	A	A1	B	D	E	F	G	H	I	W	
PRBV120H13	S	1	1.3	0.08	1/16" PR		21.3	20.6	42.6	7.1	8.7	6.4	15.0	36.0	29.0	15.0
	S	3M	2.4	0.15	3 PR		25.4	24.6	50.8							
	S	2		0.15	1/8" PR											
	F	2N	3.2	0.3	1/8" FEMALE NPT		20.6	20.6	41.2							
	S	6M		0.35	6 PR		27.7	26.9	55.4							
	S	4		0.35	1/4" PR											
PRBV120H23	F	4N	4.8	0.75	1/4" FEMALE NPT		26.2	26.2	52.4	9.4	11.2	4.8	19.8	43.7	38.5	19.8
	F	4R		0.75	1/4" ISO FEMALE											
	MS	4N-4		0.8	1/4" MALE NPT	1/4" PR	25.4	30.2	55.6							
	S	6M		0.9	6 PR		30.2	30.2	60.4							
	S	4		0.9	1/4" PR											
	S	8M		0.8	8 mm		31.0	31.0	62.0							
PRBV120H33	F	4N	7.1	1.7	1/4" FEMALE NPT		31.8	31.8	63.6	14.0	14.2	9.4	28.5	56.1	51.0	28.5
	F	6N		1.5	3/8" FEMALE NPT											
	F	6R		1.5	3/8" ISO FEMALE											
	S	6+		2	3/8" PR		38.9	38.9	77.8							
	S	10M		2	10mm PR											
PRBV120H43	F	8N	10.3	3.5	1/2" FEMALE NPT		39.6	39.6	79.2	17.5	17.5	9.4	38.1	71.8	75.0	38.1
	F	8R			1/2" ISO FEMALE											
	S	12M		4.6	12 mm		50.0	50.0	100.0							
	S	8		4.6	1/2" PR											
	S	12		3.8	3/4" PR											

* Dimensions shown with PARS REGULATOR nuts measure in the finger-tight, where applicable.
 * All dimensions could be considered as reference.

info@parsregulator.com
 Parsregulator@yahoo.com

www.parsregulator.com

Tel : 88 30 77 66
 Fax: 88 83 41 40

2 - Way & 3 - Way

Pressure Rating

Valve	2-Way Straight Pattern psig (bar)	2-Way Angle Pattern psig (bar)	2-Way Angle Pattern psig (bar)
PRBV120H1	2500 (172)	2500 (172)	2500 (172)
PRBV120H2	3000 (206)	2500 (172)	2500 (172)
PRBV120H3	2500 (172)	1500 (103)	1500 (103)
PRBV120H4	2500 (172)	1500 (103)	1500 (103)

Flow Data at 70°F (20°C)

Straight Type

Cv	Pressure Drop to Atmospher(Δp)psi					
	10	50	100	10	50	100
	Air Flow, SCFM			Water Flow, US GPM		
0.50	6.9	19.1	33.9	1.6	3.5	5.0
0.60	8.3	23	40.7	1.9	4.2	6
0.90	12	34	61	2.8	6.4	9
1.2	17	46	81	3.8	8.5	12
1.5	21	57	100	4.7	11	15
1.6	22	61	110	5	11	16
2.4	33	92	160	7.6	17	24
2.6	36	99.5	176	8.2	18	26
3	41.5	115	203	9.5	21	30
6	83	230	407	19	42	60
6.3	87.2	241	427	19.9	44.5	63
6.4	88.6	245.0	434.0	20.2	45.3	64.0
12	166.0	459.0	814.0	38.0	85.0	120.0

CV	Pressure Drop to Atmospher(Δp)psi					
	10	50	100	10	50	100
	Air Flow, SCFM			Water Flow, US GPM		
0.30	4.2	11.5	20.3	0.9	2.1	3.0
0.35	4.8	13.4	23.7	1.1	2.4	3.5
0.75	10.0	29.0	51.0	2.3	5.3	7.5
0.80	11.0	31.0	54.0	2.5	5.6	8.0
0.90	12.0	34.0	61.0	2.8	6.3	9.0
1.5	20.6	57.4	102.0	4.7	11.0	15.0
1.7	23.5	65.0	115.0	5.3	12.0	17.0
2	27.7	76.5	136.0	6.3	14.0	20.0
3.5	48.4	134.0	237.0	11.0	25.0	35.0
3.8	52.6	145.0	258.0	12.0	27.0	38.0
4.6	63.7	176.0	312.0	15.0	33.0	46.0

Ordering Information

Example : PRBV120H1 A - S - 6M - SS
 1 2 3 4 5

1. Valve Series

■ PRBVH120H1 ■ PRBVH120H2 ■ PRBVH120H3 ■ PRBVH120H4

2. Pattern Designator

■ Nil:2-Way Straight (Standard) ■ A:2-Way Angle ■ 3:3-Way

3. End Connection Type

■ PR Tube Fitting ■ F : Female Thread ■ M : Male Thread ■ MPR: Male Thread to PARS REGULATOR Tube Fitting

4. End Connection Size

Tube O.D (inch)	1/16	1/8	1/4	3/8	1/2
Designation	1	2	4	6	8
Tube O.D (inch)	3	6	8	10	12
Designation	3M	6M	8M	10M	12M

Pipe Thread Designation

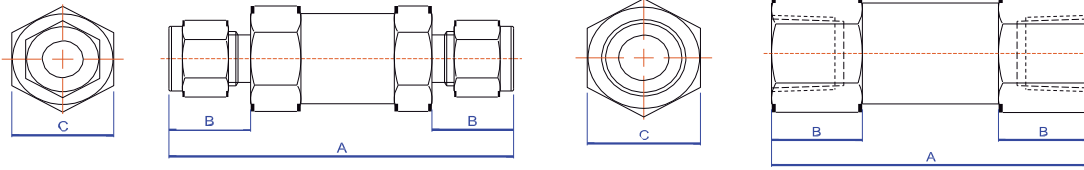
Size (inch)	1/8	1/4	1/4	3/8	1/2
Screwed NPT	2N	4N	4N	6N	8N
Screwed BSPT	2R	4M	4R	6R	8R

5. Material Designator

■ SS : 316 Stainless Steel

CHECK VALVE

Dimensions

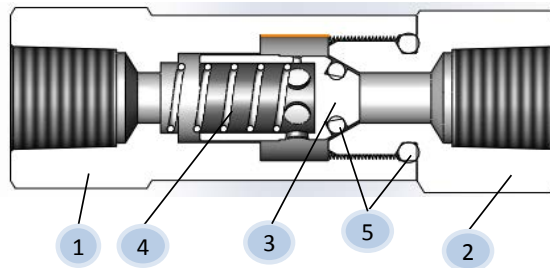


Part Number SeaCliff	End Connection		Dimensions (mm)		
	Inlet	Outlet	A	B	C
CV01S2FF	1/8" NPT female	1/8" NPT female	55	14	17
CV01S4FF	1/4" NPT female	1/4" NPT female	62	16	22
CV01S6FF	3/8" NPT female	3/8" NPT female	72	20	24
CV01S8FF	1/2" NPT female	1/2" NPT female	80	23	28
CV01S12FF	3/4" NPT female	3/4" NPT female	85	22	41
CV01S16FF	1" NPT female	1" NPT female	97	23	46
CV01S2OD	1/8" O.D.	1/8" O.D.	65	15.5	17
CV01S4OD	1/4" O.D.	1/4" O.D.	73	17.5	20
CV01S6OD	3/8" O.D.	3/8" O.D.	80	19.5	24
CV01S8OD	1/2" O.D.	1/2" O.D.	90	22	28
CV01SM6OD	6mm O.D.	6mm O.D.	73	17.5	20
CV01SM12OD	12MM O.D.	12MM O.D.	90	22	28

All dimensions could be considered as reference.

Ordering Information

CV01	s		4		FF	
Series	Body Material		Size		End Connection	
CV01	S	316L S.S.	2	1/8"	MF	NPT male-female
			4	1/4"	FF	NPT male-female
			6	3/8"	OD	Pars Regulator twin ferrule tube fittings
			8	1/2"		
			12	3/4"		
			16	1"		
			M6	6mm		
			M12	12mm		

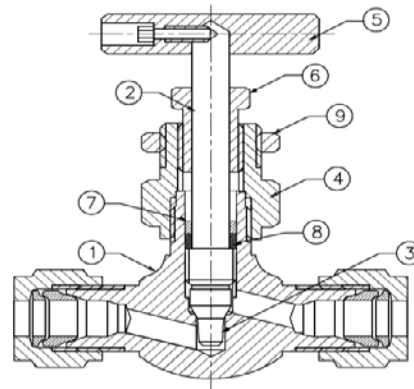


check valve		
Component		valve material Grade/ASTM Specification
1	inlet Body	316 ss/A276
2	outlet Body	316 ss/A276
3	Disk	316 ss
4	Spring	302 ss/A313
5	O-Ring	Viton

Needle Valves

Forged Body, Integral Bonnet Needle Valves

This group of valves can handle a wide range of general purpose liquid and gas applications.



Typical Applications

- Instrument air lines
- Sampling
- Gas chromatography
- Test stands
- Cylinder valves

Features & Benefits

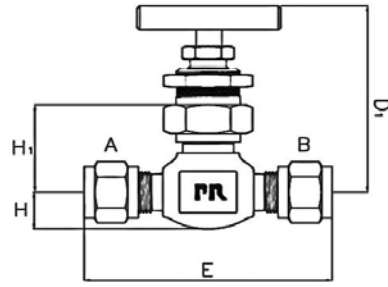
Safety

- Integral bonnet provides differential thread pitch between stem threads and packing nut thread preventing accidental stem removal

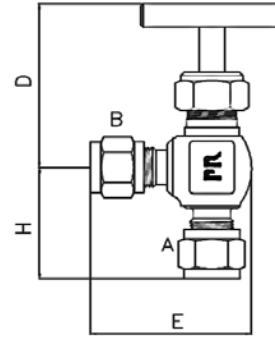
Materials of Construction

	DESCRIPTION	316 STAINLESS STEEL
1	BODY	316L STAINLESS STEEL
2	STEM	316L STAINLESS STEEL
3	STEM TIP	17-4PH STAINLESS STEEL
4	BONNET	316L STAINLESS STEEL
5	HANDLE	STAINLESS STEEL
6	PANEL MOUNTING NUT	316L STAINLESS STEEL
7	RING	316L STAINLESS STEEL
8	STEM PACKING	PTFE + GRAPHIT
9	BONNET NUT	316L STAINLESS STEEL

Needle Valves



Globe Pattern



angle Pattern

Globe Pattern

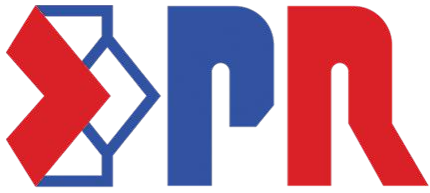
INLET A	OUTLET B		D	D ¹	E	H	H ¹
1/8" TUBE	1/8" TUBE	inch	2 7/32	2 3/4	2 1/8	19/64	1 1/32
		mm	56	70	54	8	26
1/8" male NPT	1/8" male NPT	inch	2 1/8	2 2 1/32	1 3/4	2 5/64	15/16
		mm	54	67	44	10	24
1/8" male NPT	1/8" female NPT	inch	2 1/8	2 2 1/32	1 3/4	2 5/64	15/16
		mm	54	67	44	10	24
1/8" female NPT	1/8" female NPT	inch	2 1/8	2 2 1/32	1 3/4	2 5/64	15/16
		mm	54	67	44	10	24
1/4" TUBE	1/4" TUBE	inch	2 1/8	2 2 1/32	2 3/8	2 5/64	15/16
		mm	54	67	60	10	24
1/4" male NPT	1/4" TUBE	inch	2 1/8	2 2 1/32	2 3/16	25/64	15/16
		mm	54	67	56	10	24
1/4" male NPT	1/4" male NPT	inch	2 1/8	2 2 1/32	2	25/64	15/16
		mm	54	67	51	10	24
3mm TUBE	3mm TUBE	inch	2 3/16	2 3/4	2 1/8	19/64	1 1/32
		mm	56	70	54	8	26
6mm TUBE	6mm TUBE	inch	2 1/8	2 2 1/32	2 3/8	25/64	15/16
		mm	54	67	60	10	24
8mm TUBE	8mm TUBE	inch	2.125	2 2 1/32	2 3/8	25/64	15/16
		mm	54	67	60	10	24

Angle Pattern

INLET A	OUTLET B		D	D ¹	E	H	H ¹
1/8" TUBE	1/8" TUBE	inch	2 7/32	2 3/4	1 1/2	1 1/64	1 1/64
		mm	56	70	38	26	26
1/8" male NPT	1/8" male NPT	inch	2 1/8	2 2 1/32	1 17/64	7/8	15/16
		mm	54	67	32	22	24
1/8" female NPT	1/8" female NPT	inch	2 1/8	2 2 1/32	1 17/64	7/8	15/16
		mm	54	67	32	22	24
1/8" male NPT	1/4" TUBE	inch	2 1/8	2 2 1/32	1 19/32	7/8	15/16
		mm	54	67	40	22	24
1/4" TUBE	1/4" TUBE	inch	2 1/8	2 2 1/32	1 19/32	1 3/16	15/16
		mm	54	67	40	30	24
1/4" male NPT	1/4" TUBE	inch	2 1/8	2 2 1/32	1 19/32	7/8	15/16
		mm	54	67	40	22	24
1/4" male NPT	1/4" male NPT	inch	2 1/8	2 2 1/32	1 17/64	7/8	15/16
		mm	54	67	32	22	24
6mm TUBE	6mm TUBE	inch	2 1/8	2 2 1/32	1 37/64	1 3/16	15/16
		mm	54	67	40	30	24

All dimensions could be considered as reference.

* D¹ and H¹ For valves with panel mounting.



PARS REGULATOR

Instrument Valves

Head Office: Unit 4, 2nd. Floor, No. 46, Karimkhan St., Tehran - Iran
Tel: (+98-21) 88 30 77 66 Fax: (+98-21) 88 83 41 40

Emails: info@parsregulator.com
parsregulator@yahoo.com

www.parsregulator.com