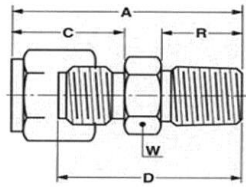
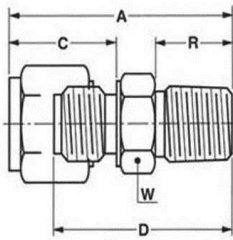
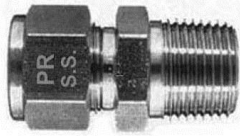


Male Connector



Tube O.D inch	NPT thread	Part Number Pars Regulator	Part Number PARKER	A inch	C inch	D inch	R inch	W inch	Min.Bore inch
1/16	1/16	1MPC1	1MSC1N	0.92	0.43	0.78	0.38	5/16	0.05
1/16	1/8	1MPC2	1MSC2N	0.98	0.43	0.84	0.38	7/16	0.05
1/16	1/4	1MPC4	1MSC4N	1.20	0.43	1.06	0.56	9/16	0.05
1/8	1/16	2MPC1	2MSC1N	1.16	0.60	0.91	0.38	3/8	0.09
1/8	1/8	2MPC2	2MSC2N	1.16	0.60	0.91	0.38	7/16	0.09
1/8	1/4	2MPC4	2MSC4N	1.38	0.60	1.13	0.56	9/16	0.09
1/8	3/8	2MPC6	2MSC6N	1.41	0.60	1.15	0.56	11/16	0.09
3/16	1/16	3MPC1	3MSC1N	1.20	0.63	0.95	0.38	7/16	0.13
3/16	1/8	3MPC2	3MSC2N	1.20	0.63	0.95	0.38	7/16	0.13
3/16	1/4	3MPC4	3MSC4N	1.41	0.63	1.16	0.56	9/16	0.13
1/4	1/16	4MPC1	4MSC1N	1.30	0.70	1.00	0.38	1/2	0.13
1/4	1/8	4MPC2	4MSC2N	1.30	0.70	1.00	0.38	1/2	0.19
1/4	1/4	4MPC4	4MSC4N	1.49	0.70	1.19	0.56	9/16	0.19
1/4	3/8	4MPC6	4MSC6N	1.52	0.70	1.22	0.56	11/16	0.19
1/4	1/2	4MPC8	4MSC8N	1.74	0.70	1.44	0.75	7/8	0.19
5/16	1/8	5MPC2	5MSC2N	1.34	0.73	1.05	0.38	9/16	0.19
5/16	1/4	5MPC4	5MSC4N	1.52	0.73	1.23	0.56	9/16	0.25
5/16	3/8	5MPC6	5MSC6N	1.54	0.73	1.25	0.56	11/16	0.25
3/8	1/8	6MPC2	6MSC2N	1.38	0.76	1.09	0.38	5/8	0.19
3/8	1/4	6MPC4	6MSC4N	1.57	0.76	1.28	0.56	5/8	0.28
3/8	3/8	6MPC6	6MSC6N	1.57	0.76	1.28	0.56	11/16	0.28
3/8	1/2	6MPC8	6MSC8N	1.79	0.76	1.50	0.75	7/8	0.28
3/8	3/4	6MPC12	6MSC12N	1.82	0.76	1.53	0.75	1.1/16	0.28
1/2	1/8	8MPC2	8MSC2N	1.51	0.86	1.13	0.38	13/16	0.19
1/2	1/4	8MPC4	8MSC4N	1.69	0.86	1.31	0.56	13/16	0.28
1/2	3/8	8MPC6	8MSC6N	1.69	0.86	1.31	0.56	13/16	0.41
1/2	1/2	8MPC8	8MSC8N	1.88	0.86	1.50	0.75	7/8	0.41
1/2	3/4	8MPC12	8MSC12N	1.91	0.86	1.53	0.75	1.1/16	0.41
1/2	1	8MPC16	8MSC16N	2.26	0.86	1.88	0.94	1.3/8	0.41
5/8	3/8	10MPC6	10MSC6N	1.72	0.86	1.34	0.56	15/16	0.41
5/8	1/2	10MPC8	10MSC8N	1.91	0.86	1.53	0.75	15/16	0.50
5/8	3/4	10MPC12	10MSC12N	1.91	0.86	1.53	0.75	1.1/16	0.50
3/4	1/2	12MPC8	12MSC8N	1.97	0.86	1.59	0.75	1.1/16	0.50
3/4	3/4	12MPC12	12MSC12N	1.97	0.86	1.59	0.75	1.1/16	0.63
3/4	1	12MPC16	12MSC16N	2.19	0.86	1.81	0.94	1.3/8	0.63
7/8	3/4	14MPC12	14MSC12N	1.97	0.86	1.59	0.75	1.3/16	0.72
1	1/2	16MPC8	16MSC8N	2.25	0.04	1.78	0.75	1.3/8	0.50
1	3/4	16MPC12	16MSC12N	2.25	0.04	1.78	0.75	1.3/8	0.72
1	1	16MPC16	16MSC16N	2.44	0.04	1.97	0.94	1.3/8	0.88

Male Connector



Tube O.D mm	NPT thread d	Part Number Pars Regulator	Part Number PARKER	A mm	C mm	D mm	R mm	W mm	Min.Bore inch
2	1/8	M2MPC1/8	M2MSC1/8N	29,7	15,3	23,1	9,5	12,0	1,7
3	1/8	M3MPC1/8	M3MSC1/8N	29,7	15,3	23,1	9,5	12,0	2,4
3	1/4	M3MPC1/4	M3MSC1/4N	35,3	15,3	28,7	14,3	14,0	2,4
4	1/8	M4MPC1/8	M4MSC1/8N	30,4	16,1	23,8	9,5	12,0	3,0
4	1/4	M4MPC1/4	M4MSC1/4N	36,0	16,1	29,4	14,3	14,0	3,0
6	1/8	M6MPC1/8	M6MSC1/8N	32,9	17,7	25,4	9,5	14,0	3,2
6	1/4	M6MPC1/4	M6MSC1/4N	37,7	17,7	30,2	14,3	14,0	4,8
6	3/8	M6MPC3/8	M6MSC3/8N	38,5	17,7	31,0	14,3	18,0	4,8
6	1/2	M6MPC1/2	M6MSC1/2N	44,0	17,7	36,5	19,1	22,0	4,8
8	1/8	M8MPC1/8	M8MSC1/8N	34,2	18,6	26,7	9,5	15,0	4,8
8	1/4	M8MPC1/4	M8MSC1/4N	38,7	18,6	31,2	14,3	15,0	6,4
8	3/8	M8MPC3/8	M8MSC3/8N	39,3	18,6	31,8	14,3	18,0	6,4
8	1/2	M8MPC1/2	M8MSC1/2N	44,8	18,6	37,3	19,1	22,0	6,4
10	1/4	M10MPC1/4	M10MSC1/4N	40,9	19,5	33,3	14,3	18,0	7,1
10	3/8	M10MPC3/8	M10MSC3/8N	40,9	19,5	33,3	14,3	18,0	7,9
10	1/2	M10MPC1/2	M10MSC1/2N	45,7	19,5	38,1	19,1	22,0	7,9
12	1/4	M12MPC1/4	M12MSC1/4N	43,4	22,0	33,3	14,3	22,0	7,1
12	3/8	M12MPC3/8	M12MSC3/8N	43,4	22,0	33,3	14,3	22,0	9,5
12	1/2	M12MPC1/2	M12MSC1/2N	48,2	22,0	38,1	19,1	22,0	9,5
12	3/4	M12MPC3/4	M12MSC3/4N	49,0	22,0	38,9	19,1	27,0	9,5
14	1/2	M14MPC1/2	M14MSC1/2N	49,0	22,0	38,9	19,1	24,0	11,1
15	1/2	M15MPC1/2	M15MSC1/2N	49,0	22,0	38,9	19,1	24,0	11,9
16	3/8	M16MPC3/8	M16MSC3/8N	44,2	22,0	34,1	14,3	24,0	10,3
16	1/2	M16MPC1/2	M16MSC1/2N	49,0	22,0	38,9	19,1	24,0	12,7
16	3/4	M16MPC3/4	M16MSC3/4N	49,0	22,0	38,9	19,1	27,0	12,7
18	1/2	M18MPC1/2	M18MSC1/2N	50,6	22,0	40,5	19,1	27,0	12,7
18	3/4	M18MPC3/4	M18MSC3/4N	50,6	22,0	40,5	19,1	27,0	15,1
20	1/2	M20MPC1/2	M20MSC1/2N	50,6	22,0	42,2	19,1	30,0	12,7
20	3/4	M20MPC3/4	M20MSC3/4N	52,3	22,0	42,2	19,1	30,0	15,9
22	3/4	M22MPC3/4	M20MSC3/4N	52,3	22,0	42,2	19,1	30,0	18,2
25	3/4	M25MPC3/4	M25MSC3/4N	57,5	26,5	45,2	19,1	35,0	18,3
25	1	M25MPC1	M25MSC1N	62,3	26,5	50,0	23,8	35,0	22,2

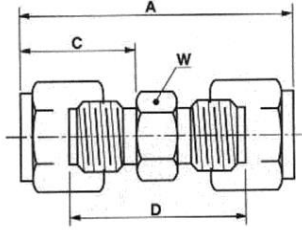
TUBE FITTINGS

E-MAIL : info@parsregulator.com
parsregulator@yahoo.com

www.parsregulator.com

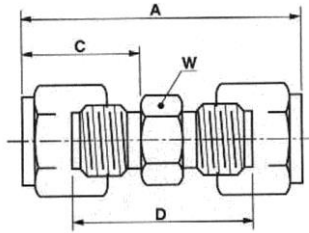
Tel : 88 30 77 66
Fax: 88 83 41 40

Union



Tube O.D inch	Part Number Pars Regulator	Part Number PARKER	A inch	C inch	D inch	W inch	Min.Bore inch
1/16	1PU1	1SC1	0.97	0.43	0.69	5/16	0.05
1/8	2PU2	2SC2	1.38	0.60	0.88	7/16	0.09
3/16	3PU3	3SC3	1.45	0.63	0.95	7/16	0.13
1/4	4PU4	4SC4	1.62	0.70	1.03	1/2	0.19
5/16	5PU5	5SC5	1.70	0.73	1.11	9/16	0.25
3/8	6PU6	6SC6	1.78	0.76	1.19	5/8	0.28
1/2	8PU8	8SC8	2.00	0.86	1.22	13/16	0.41
5/8	10PU10	10SC10	2.02	0.86	1.25	15/16	0.50
3/4	12PU12	12SC12	2.08	0.86	1.31	1.1/16	0.63
7/8	14PU14	14SC14	2.15	0.86	1.38	1.3/16	0.75
1	16PU16	16SC16	2.53	1.04	1.59	1.3/8	0.88

Union



Tube O.D mm	Part Number Pars Regulator	Part Number PARKER	A mm	C mm	D mm	W mm	Min.Bore inch
2	PUM2	SCM2	35,6	15,3	22,4	12,0	1,7
3	PUM3	SCM3	35,3	15,3	22,1	12,0	2,4
4	PUM4	SCM4	37,4	16,1	24,2	12,0	3,0
6	PUM6	SCM6	41,2	17,7	26,2	14,0	4,8
8	PUM8	SCM8	43,2	18,6	28,2	15,0	6,4
10	PUM10	SCM10	46,2	19,5	31,0	18,0	7,9
12	PUM12	SCM12	51,2	22,0	31,0	22,0	9,5
14	PUM14	SCM14	52,0	22,0	31,8	24,0	11,1
15	PUM15	SCM15	52,0	22,0	31,8	24,0	11,1
16	PUM16	SCM16	52,0	22,0	31,8	24,0	12,7
18	PUM18	SCM18	53,5	22,0	33,3	27,0	15,1
20	PUM20	SCM20	55,0	22,0	34,8	30,0	15,9
22	PUM22	SCM22	55,0	22,0	34,8	30,0	18,2
25	PUM25	SCM25	65,1	26,5	40,5	35,0	22,2

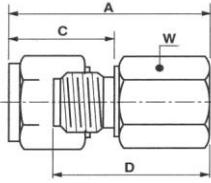
TUBEFITTINGS

E-MAIL : info@parsregulator.com
parsregulator@yahoo.com

www.parsregulator.com

Tel : 88 30 77 66
Fax: 88 83 41 40

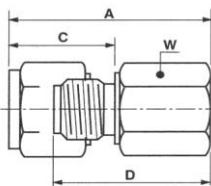
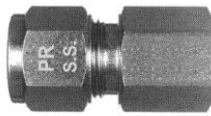
Female Connector



Tube O.D inch	NPT thread	Part Number Pars Regulator	Part Number PARKER	A inch	C inch	D inch	W inch	Min.Bore inch
1/16	1/16	1FPC1	1FSC1N	0.92	0.43	0.78	7/16	0.05
1/16	1/8	1FPC2	1FSC2N	0.95	0.43	0.81	9/16	0.05
1/8	1/8	2FPC2	2FSC2N	1.13	0.60	0.88	9/16	0.09
1/8	1/4	2FPC4	2FSC4N	1.31	0.6	1.06	3/4	0.09
3/16	1/8	3FPC2	3FSC2N	1.16	0.63	0.91	9/16	0.13
3/16	1/4	3FPC4	3FSC4N	1.28	0.63	1.03	3/4	0.13
1/4	1/8	4FPC2	4FSC2N	1.24	0.70	0.94	9/16	0.19
1/4	1/4	4FPC4	4FSC4N	1.43	0.70	1.13	3/4	0.19
1/4	3/8	4FPC6	4FSC6N	1.49	0.70	1.19	7/8	0.19
1/4	1/2	4FPC8	4FSC8N	1.71	0.70	1.41	1.1/16	0.19
5/16	1/8	5FPC2	5FSC2N	1.26	0.73	0.97	9/16	0.25
5/16	1/4	5FPC4	5FSC4N	1.45	0.73	1.16	3/4	0.25
5/16	3/8	5FPC6	5FSC6N	1.51	0.73	1.22	7/8	0.25
3/8	1/8	6FPC2	6FSC2N	1.29	0.76	1	5/8	0.28
3/8	1/4	6FPC4	6FSC4N	1.48	0.76	1.19	3/4	0.28
3/8	3/8	6FPC6	6FSC6N	1.54	0.76	1.25	7/8	0.28
3/8	1/2	6FPC8	6FSC8N	1.73	0.76	1.44	1.1/16	0.28
1/2	1/4	8FPC4	8FSC4N	1.63	0.86	1.25	13/16	0.41
1/2	3/8	8FPC6	8FSC6N	1.63	0.86	1.25	7/8	0.41
1/2	1/2	8FPC8	8FSC8N	1.82	0.86	1.44	1.1/16	0.41
1/2	3/4	8FPC12	8FSC12N	1.88	0.86	1.5	1.5/16	0.41
5/8	3/8	10FPC6	10FSC6N	1.63	0.86	1.25	15/16	0.50
5/8	1/2	10FPC8	10FSC8N	1.82	0.86	1.44	1.1/16	0.50
3/4	1/2	12FPC8	12FSC8N	1.82	0.86	1.44	1.1/16	0.63
3/4	3/4	12FPC12	12FSC12N	1.88	0.86	1.5	1.5/16	0.63
7/8	3/4	14FPC12	14FSC12N	1.94	0.86	1.56	1.3/8	0.75
1	3/4	16FPC12	16FSC12N	2.10	1.04	1.63	1.3/8	0.88
1	1	16FPC16	16FSC16N	2.44	1.04	1.97	1.5/8	0.88

TUBEFITTINGS

Female Connector



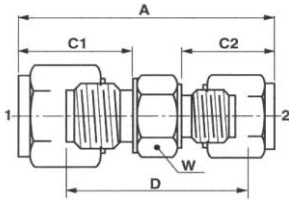
Tube O.D mm	NPT thread	Part Number Pars Regulator	Part Number PARKER	A mm	C mm	D mm	W mm	Min.Bore inch
3	1/8	M3FPC1/8	M3FSC1/8N	28,8	15,3	22,2	14,0	2,4
3	1/4	M3FPC1/4	M3FSC1/4N	33,6	15,3	27,0	19,0	2,4
4	1/8	M4FPC1/8	M4FSC1/8N	29,6	16,1	23,0	14,0	3,0
6	1/8	M6FPC1/8	M6FSC1/8N	31,3	17,7	23,8	14,0	4,8
6	1/4	M6FPC1/4	M6FSC1/4N	36,1	17,7	28,6	19,0	4,8
6	3/8	M6FPC3/8	M6FSC3/8N	37,7	17,7	30,2	22,0	4,8
6	1/2	M6FPC1/2	M6FSC1/2N	42,5	17,7	35,0	27,0	6,4
8	1/8	M8FPC1/8	M8FSC1/8N	32,1	18,6	24,6	14,0	6,4
8	1/4	M8FPC1/4	M8FSC1/4N	36,9	18,6	29,4	19,0	6,4
8	3/8	M8FPC3/8	M8FSC3/8N	38,5	18,6	31,0	22,0	6,4
10	1/4	M10FPC1/4	M10FSC1/4N	37,8	19,5	30,2	19,0	7,9
10	3/8	M10FPC3/8	M10FSC3/8N	39,4	19,5	31,8	22,0	7,9
10	1/2	M10FPC1/2	M10FSC1/2N	44,1	19,5	36,5	27,0	7,9
12	1/4	M12FPC1/4	M12FSC1/4N	41,9	22,0	31,8	22,0	9,5
12	3/8	M12FPC3/8	M12FSC3/8N	41,9	22,0	31,8	22,0	9,5
12	1/2	M12FPC1/2	M12FSC1/2N	46,6	22,0	36,5	27,0	9,5
16	3/8	M16FPC3/8	M16FSC3/8N	41,9	22,0	31,8	27,0	12,7
16	1/2	M16FPC1/2	M16FSC1/2N	46,6	22,0	36,5	27,0	12,7
20	1/2	M20FPC1/2	M20FSC1/2N	47,9	22,0	37,8	30,0	15,9
20	3/4	M20FPC3/4	M20FSC3/4N	49,7	22,0	39,6	35,0	15,9
22	3/4	M22FPC3/4	M22FSC3/4N	49,7	22,0	39,6	35,0	18,3
25	3/4	M25FPC3/4	M25FSC3/4N	53,6	26,5	41,3	35,0	22,2
25	1	M25FPC1	M25FSC1N	62,3	26,5	50,0	41,0	22,2

E-MAIL : info@parsregulator.com
Parsregulator@yahoo.com

www.parsregulator.com

Tel : 88 30 77 66
Fax: 88 83 41 40

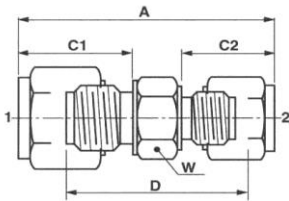
Reducing Union



Tube 1 o.D inch	Tube 2 o.D inch	Part Number Pars Regulator	Part Number PARKER	A inch	C1 inch	C2 inch	D inch	W inch	Min.Bore inch
1/8	1/16	2PRU1	2RU1	1.20	0.60	0.43	0.81	7/16	0.05
3/16	1/16	3PRU1	3RU1	1.25	0.63	0.43	0.86	7/16	0.05
3/16	1/8	3PRU2	3RU2	1.42	0.63	0.6	0.92	7/16	0.09
1/4	1/16	4PRU1	4RU1	1.35	0.70	0.43	0.91	1/2	0.05
1/4	1/8	4PRU2	4RU2	1.52	0.70	0.60	0.97	1/2	0.09
1/4	3/16	4PRU3	4RU3	1.54	0.70	0.63	1.00	1/2	0.13
5/16	1/4	5PRU4	5RU4	1.67	0.73	0.70	1.08	9/16	0.19
3/8	1/16	6PRU1	6RU1	1.44	0.76	0.43	1.00	5/8	0.05
3/8	1/8	6PRU2	6RU2	1.60	0.76	0.60	1.06	5/8	0.09
3/8	1/4	6PRU4	6RU4	1.72	0.76	0.70	1.13	5/8	0.19
3/8	5/16	6PRU5	6RU5	1.75	0.76	0.73	1.16	5/8	0.25
1/2	1/8	8PRU2	8RU2	1.72	0.86	0.60	1.09	13/16	0.09
1/2	1/4	8PRU4	8RU4	1.84	0.86	0.70	1.16	13/16	0.19
1/2	3/8	8PRU6	8RU6	1.90	0.86	0.76	1.22	13/16	0.28
5/8	3/8	10PRU6	10RU6	1.93	0.86	0.76	1.25	15/16	0.28
5/8	1/2	10PRU8	10RU8	2.02	0.86	0.86	1.25	15/16	0.41
3/4	1/2	12PRU8	12RU8	2.08	0.86	0.86	1.31	1.1/16	0.41
3/4	5/8	12PRU10	12RU10	2.08	0.86	0.86	1.31	1.1/16	0.50
1	3/4	16PRU12	16RU12	2.35	1.04	0.86	1.50	1.3/8	0.63

TUBEFITTINGS

Reducing Union



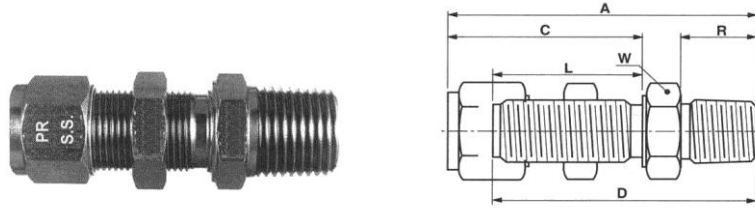
Tube O.D 1mm	Tube O.D 2 mm	Part Number Pars Regulator	Part Number PARKER	A mm	C1 mm	C 2 mm	D mm	W mm	Min.Bore inch
6	2	P6RUM2	M6RUM2	38,7	17,7	15,3	24,6	14,0	1,8
6	3	P6RUM3	M6RUM3	38,7	17,7	15,3	24,6	14,0	2,4
8	6	P8RUM6	M8RUM6	42,4	18,6	17,7	27,4	15,0	4,8
10	6	P10RUM6	M10RUM6	44,5	19,5	17,7	29,4	18,0	4,8
10	8	P10RUM8	M10RUM8	44,5	19,5	18,6	29,4	18,0	6,4
12	6	P12RUM6	M12RUM6	47,0	22,0	17,7	29,4	22,0	4,8
12	8	P12RUM8	M12RUM8	47,8	22,0	18,6	30,2	22,0	6,4
12	10	P12RUM10	M12RUM10	48,7	22,0	19,5	31,0	22,0	7,9
16	12	P16RUM12	M16RUM12	52,0	22,0	22,0	31,8	24,0	9,5
25	18	P25RUM18	M25RUM18	60,5	26,5	22,0	38,1	35,0	15,1
25	20	P25RUM20	M25RUM20	62,3	26,5	22,0	39,9	35,0	15,9

E-MAIL : info@parsregulator.com
parsregulator@yahoo.com

www.parsregulator.com

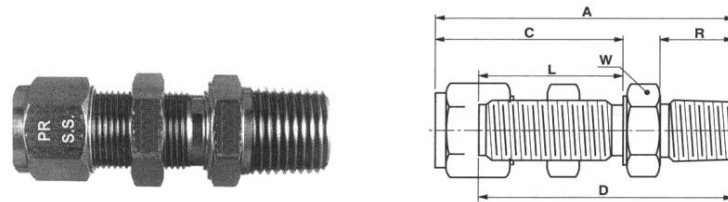
Tel : 88 30 77 66
Fax: 88 83 41 40

Male Bulkhead Connector



Tube O.D inch	NPT thread	Part Number Pars Regulator	Part Number PARKER	A inch	C inch	D inch	L inch	R inch	W inch	B,head hole drill size inch	Max b,head thickness inch	Min.Bore inch
1/16	1/16	1MBPC1	1MBC1N	1.55	0.67	1.41	0.53	0.38	5/16	13/64	0.12	0.05
1/16	1/8	1MBPC2	1MBC2N	1.55	0.67	1.41	0.53	0.38	7/16	13/64	0.12	0.05
1/8	1/8	2MBPC2	2MBC2N	1.81	1.22	1.56	0.97	0.38	1/2	21/64	0.50	0.09
3/16	1/8	3MBPC2	3MBC2N	1.84	1.25	1.59	1.00	0.38	9/16	25/64	0.50	0.13
1/4	1/8	4MBPC2	4MBC2N	1.96	1.33	1.66	1.03	0.38	5/8	29/64	0.40	0.19
1/4	1/4	4MBPC4	4MBC4N	2.11	1.33	1.81	1.03	0.56	5/8	29/64	0.40	0.19
1/4	3/8	4MBPC6	4MBC6N	2.18	1.33	1.88	1.03	0.56	11/16	29/64	0.40	0.19
1/4	1/2	4MBPC8	4MBC8N	2.49	1.33	2.19	1.03	0.75	7/8	29/64	0.40	0.19
3/8	1/8	6MBPC2	6MBC2N	2.10	1.45	1.81	1.16	0.38	3/4	37/64	0.44	0.19
3/8	1/4	6MBPC4	6MBC4N	2.26	1.45	1.97	1.16	0.56	3/4	37/64	0.44	0.28
3/8	3/8	6MBPC6	6MBC6N	2.26	1.45	1.97	1.16	0.56	3/4	37/64	0.44	0.28
3/8	1/2	6MBPC8	6MBC8N	2.60	1.45	2.31	1.16	0.75	7/8	37/64	0.44	0.28
1/2	3/8	8MBPC6	8MBC6N	2.52	1.63	2.14	1.25	0.56	15/16	49/64	0.50	0.41
1/2	1/2	8MBPC8	8MBC8N	2.66	1.63	2.28	1.25	0.75	15/16	49/64	0.50	0.41

Male Bulkhead Connector



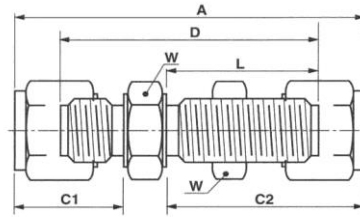
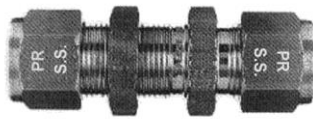
Tube O.D mm	NPT thread	Part Number Pars Regulator	Part Number PARKER	A mm	C mm	D mm	L mm	R mm	W mm	B,head hole drill size mm	Max b,head thickness mm	Min.Bore mm
6	1/8	M6MBPC1/8	M6MBC1/8N	49,6	33,7	42,1	26,2	9,5	16,0	11,5	10,2	4,8
6	1/4	M6MBPC1/4	M6MBC1/4N	53,5	33,7	46,0	26,2	14,3	16,0	11,5	10,2	4,8
8	1/8	M8MBPC1/8	M8MBC1/8N	52,3	36,0	44,8	28,5	9,5	18,0	13,1	11,2	4,8
8	1/4	M8MBPC1/4	M8MBC1/4N	57,5	36,0	50,0	28,5	14,3	18,0	13,1	11,2	6,4
10	1/4	M10MBPC1/4	M10MBC1/4N	58,4	37,0	50,8	29,4	14,3	22,0	16,3	11,2	7,1
10	3/8	M10MBPC3/8	M10MBC3/8N	58,4	37,0	50,8	29,4	14,3	22,0	16,3	11,2	7,9
10	1/2	M10MBPC1/2	M10MBC1/2N	63,1	37,0	55,5	29,4	19,0	22,0	16,3	11,2	7,9
12	1/4	M12MBPC1/4	M12MBC1/4N	63,3	10,1	53,2	31,8	14,3	24,0	19,5	12,7	7,1
12	3/8	M12MBPC3/8	M12MBC3/8N	64,5	10,1	54,4	31,8	14,3	24,0	19,5	12,7	9,5
12	1/2	M12MBPC1/2	M12MBC1/2N	67,5	10,1	57,4	31,8	19,0	24,0	19,5	12,7	9,5

E-MAIL : info@parsregulator.com
parsregulator@yahoo.com

www.parsregulator.com

Tel : 88 30 77 66
Fax: 88 83 41 40

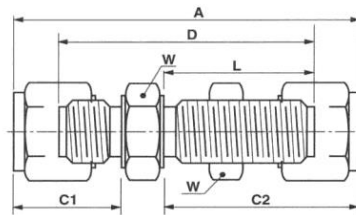
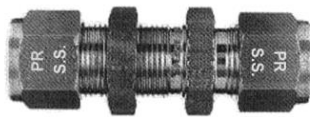
Bulkhead Union



Tube O.D inch	Part Number Pars Regulator	Part Number PARKER	A inch	C1 inch	C2 inch	D inch	L inch	W inch	B,head hole drill size inch	Max b,head thickness inch	Min.Bore inch
1/16	1PBU1	1BC1	1.22	0.43	0.67	0.94	0.53	5/16	13/64	0.12	0.05
1/8	2PBU2	2BC2	2.00	0.60	1.22	1.50	0.97	1/2	21/64	0.50	0.09
3/16	3PBU3	3BC3	2.09	0.63	1.25	1.59	1.00	9/16	25/64	0.50	0.13
1/4	4PBU4	4BC4	2.28	0.70	1.33	1.69	1.03	5/8	29/64	0.40	0.19
5/16	5PBU5	5BC5	2.40	0.73	1.41	1.81	1.12	11/16	33/64	0.44	0.25
3/8	6PBU6	6BC6	2.47	0.76	1.45	1.88	1.16	3/4	37/64	0.44	0.28
1/2	8PBU8	8BC8	2.77	0.86	1.63	2	1.25	15/16	49/64	0.50	0.41
5/8	10PBU10	10BC10	2.83	0.86	1.66	2.06	1.28	1.1/16	57/64	0.50	0.50
3/4	12PBU12	12BC12	3.08	0.86	1.85	2.31	1.47	1.3/16	1.1/64	0.66	0.63
7/8	14PBU14	14BC14	3.30	0.86	2.07	2.53	1.69	1.3/8	1.9/64	0.75	0.75
1	16PBU16	16BC16	3.75	1.04	2.25	2.81	1.78	1.5/8	1.21/64	0.75	0.88

TUBEFITTINGS

Bulkhead Union



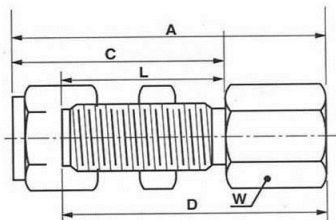
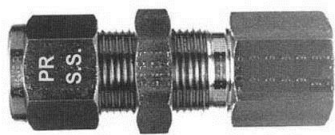
Tube O.D mm	Part Number Pars Regulator	Part Number PARKER	A mm	C1 mm	C2 mm	D mm	L mm	W mm	B,head hole drill size mm	Max b,head thickness mm	Min.Bore mm
3	PBUM3	BCM3	51,3	15,3	31,2	38,2	24,6	14,0	8.3	12,7	2,4
4	PBUM4	BCM4	53,7	16,1	32,0	40,5	25,4	14,0	9.9	12,7	3,0
6	PBUM6	BCM6	57,9	17,7	33,7	42,9	26,2	16,0	11.5	10,2	4,8
8	PBUM8	BCM8	61,0	18,6	36,0	46,0	28,5	18,0	13.1	11,2	6,4
10	PBUM10	BCM10	63,6	19,5	37,0	48,4	29,4	22,0	16.3	11,2	7,9
12	PBUM12	BCM12	71,0	22,0	41,9	50,8	31,8	24,0	19.5	12,7	9,5
15	PBUM15	BCM15	72,5	22,0	42,6	52,3	32,5	27,0	22,5	12,7	11,9
16	PBUM16	BCM16	72,6	22,0	42,6	52,4	32,5	27,0	22,5	12,7	12,7
18	PBUM18	BCM18	78,9	22,0	47,4	58,7	37,3	30,0	26,0	16,8	15,1

E-MAIL : info@parsregulator.com
parsregulator@yahoo.com

www.parsregulator.com

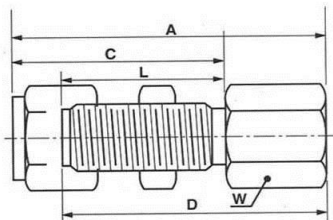
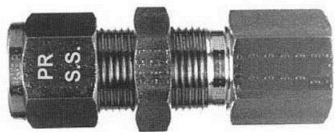
Tel : 88 30 77 66
Fax: 88 83 41 40

Female Bulkhead Connector



Tube O.D inch	NPT thread	Part Number Pars Regulator	Part Number PARKER	A inch	C inch	D inch	L inch	W inch	B,head hole drill size inch	Max b,head thickness inch	Min.Bore inch
1/8	1/8	2FBPC2	2FBC2N	1.75	1.22	1.50	0.97	9/16	21/64	0.50	0.09
3/16	1/8	3FBPC2	3FBC2N	1.78	1.25	1.53	1.00	9/16	25/64	0.50	0.13
1/4	1/8	4FBPC2	4FBC2N	1.86	1.33	1.56	1.03	5/8	29/64	0.40	0.19
1/4	1/4	4FBPC4	4FBC4N	2.05	1.33	1.75	1.03	3/4	29/64	0.40	0.19
5/16	1/8	5FBPC2	5FBC2N	1.95	1.41	1.66	1.12	11/16	33/64	0.44	0.25
5/16	1/2	5FBPC8	5FBC8N	2.38	1.41	2.09	1.12	1.1/16	33/64	0.44	0.25
3/8	1/4	6FBPC4	6FBC4N	2.17	1.45	1.88	1.16	3/4	37/64	0.44	0.28
1/2	3/8	8FBPC6	8FBC6N	2.41	1.63	2.03	1.25	7/8	49/64	0.50	0.41
1/2	1/2	8FBPC8	8FBC8N	2.60	1.63	2.22	1.25	1.1/16	49/64	0.50	0.41
3/4	3/4	12FBPC12	12FBC12N	2.88	1.85	2.5	1.47	1.3/8	1.1/64	0.66	0.63
7/8	3/4	14FBPC12	14FBC12N	3.16	2.07	2.78	1.69	1.3/8	1.9/64	0.75	0.75
1	1	16FBPC16	16FBC16N	3.66	2.25	3.19	1.78	1.5/8	1.2/64	0.75	0.88

Female Bulkhead Connector



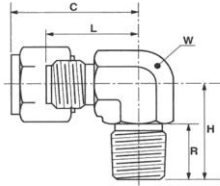
Tube O.D mm	NPT thread	Part Number Pars Regulator	Part Number PARKER	A mm	C mm	D mm	L mm	W mm	B,head hole drill size mm	Max b,head thickness mm	Min.Bore mm
6	1/8	M6FBPC1/8	M6FBC1/8N	47,2	33,7	39,7	26,2	16,0	11,5	10,2	4,8
6	1/4	M6FBPC1/4	M6FBC1/4N	52,0	33,7	44,5	26,2	19,0	11,5	10,2	4,8
8	1/8	M8FBPC1/8	M8FBC1/8N	49,6	36,1	42,1	28,5	18,0	13,1	11,2	6,4
10	1/4	M10FBPC1/4	M10FBC1/4N	55,2	37,0	47,6	29,4	19,0	16,3	11,2	7,9
12	3/8	M12FBPC3/8	M12FBC3/8N	60,9	41,9	50,8	31,8	24,0	19,5	12,7	9,5
12	1/2	M12FBPC1/2	M12FBC1/2N	66,4	41,9	56,3	31,8	27,0	19,5	12,7	9,5

E-MAIL : info@parsregulator.com
parsregulator@yahoo.com

www.parsregulator.com

Tel : 88 30 77 66
Fax: 88 83 41 40

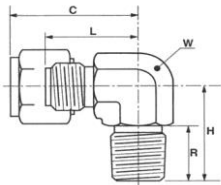
Male Elbow



Tube O.D inch	NPT thread	Part Number Pars Regulator	Part Number PARKER	C inch	H inch	L inch	R inch	W inch	Min.Bore inch
1/16	1/16	1MPEL1	1MSEL1N	0.70	0.72	0.56	0.38	5/16	0.05
1/16	1/8	1MPEL2	1MSEL2N	0.70	0.72	0.56	0.38	5/16	0.05
1/8	1/8	2MPEL2	2MSEL2N	0.91	0.72	0.66	0.38	5/16	0.09
1/8	1/4	2MPEL4	2MSEL4N	0.97	0.94	0.72	0.56	9/16	0.09
3/16	1/8	3MPEL2	3MSEL2N	0.94	0.75	0.69	0.38	7/16	0.13
1/4	1/8	4MPEL2	4MSEL2N	1.02	0.78	0.72	0.38	7/16	0.19
1/4	1/4	4MPEL4	4MSEL4N	1.08	0.94	0.78	0.56	9/16	0.19
1/4	3/8	4MPEL6	4MSEL6N	1.18	1.13	0.88	0.56	3/4	0.19
1/4	1/2	4MPEL8	4MSEL8N	1.27	1.31	0.97	0.75	7/8	0.19
5/16	1/8	5MPEL2	5MSEL2N	1.10	0.81	0.81	0.38	9/16	0.19
5/16	1/4	5MPEL4	5MSEL4N	1.10	1.00	0.81	0.56	9/16	0.25
5/16	3/8	5MPEL6	5MSEL6N	1.23	1.13	0.94	0.56	3/4	0.25
3/8	1/8	6MPEL2	6MSEL2N	1.13	0.88	0.84	0.38	9/16	0.19
3/8	1/4	6MPEL4	6MSEL4N	1.13	1.00	0.84	0.56	9/16	0.28
3/8	3/8	6MPEL6	6MSEL6N	1.26	1.13	0.97	0.56	3/4	0.28
3/8	1/2	6MPEL8	6MSEL8N	1.32	1.03	1.03	0.75	7/8	0.28
1/2	1/4	8MPEL4	8MSEL4N	1.35	1.13	0.97	0.56	3/4	0.28
1/2	3/8	8MPEL6	8MSEL6N	1.35	1.13	0.97	0.56	3/4	0.41
1/2	1/2	8MPEL8	8MSEL8N	1.41	1.31	1.03	0.75	7/8	0.41
1/2	3/4	8MPEL12	8MSEL12N	1.54	1.50	1.16	0.75	1.1/16	0.41
5/8	3/8	10MPEL6	10MSEL6N	1.41	1.25	1.03	0.56	7/8	0.41
5/8	1/2	10MPEL8	10MSEL8N	1.44	1.34	1.06	0.75	7/8	0.50
3/4	1/2	12MPEL8	12MSEL8N	1.54	1.50	1.16	0.75	1.1/16	0.50
3/4	3/4	12MPEL12	12MSEL12N	1.54	1.50	1.16	0.75	1.1/16	0.63
7/8	3/4	14MPEL12	14MSEL12N	1.66	1.50	1.28	0.75	1.5/16	0.72
1	3/4	16MPEL12	16MSEL12N	1.78	1.66	1.31	0.75	1.5/16	0.72
1	1	16MPEL16	16MSEL16N	1.77	1.84	1.31	0.94	1.5/16	0.88

TUBEFITTINGS

Male Elbow



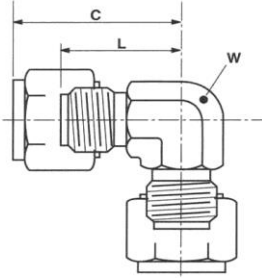
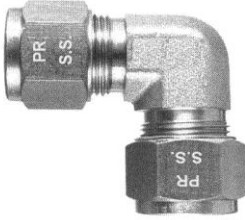
Tube O.D mm	NPT thread	Part Number Pars Regulator	Part Number PARKER	C mm	H mm	L mm	R mm	W mm	Min.Bore mm
3	1/8	M3MPEL1/8	M3MSEL1/8N	23,3	18,3	16,7	9,7	8,0	2,4
3	1/4	M3MPEL1/4	M3MSEL1/4N	24,9	23,8	18,3	14,2	14,0	2,4
4	1/8	M4MPEL1/8	M4MSEL1/8N	24,1	18,3	17,5	9,7	8,0	3,0
4	1/4	M4MPEL1/4	M4MSEL1/4N	25,7	23,8	19,1	14,2	14,0	3,0
6	1/8	M6MPEL1/8	M6MSEL1/8N	25,8	19,8	18,3	9,7	11,0	4,8
6	1/4	M6MPEL1/4	M6MSEL1/4N	27,3	23,8	19,8	14,2	14,0	4,8
6	3/8	M6MPEL3/8	M6MSEL3/8N	29,7	28,6	22,2	14,2	19,0	4,8
6	1/2	M6MPEL1/2	M6MSEL1/2N	32,1	33,3	24,6	19,1	22,0	4,8
8	1/4	M8MPEL1/4	M8MSEL1/4LN	28,1	25,4	20,6	14,2	14,0	6,4
8	3/8	M8MPEL3/8	M8MSEL3/8N	31,4	28,7	23,9	14,2	19,0	6,4
10	1/4	M10MPEL1/4	M10MSEL1/4N	33,0	28,6	25,4	14,2	19,0	7,1
10	3/8	M10MPEL3/8	M10MSEL3/8N	33,0	28,6	25,4	14,2	19,0	7,9
10	1/2	M10MPEL1/2	M10MSEL1/2N	33,8	33,3	26,2	19,1	22,0	7,9
12	1/4	M12MPEL1/4	M12MSEL1/4N	34,7	28,6	24,6	14,2	19,0	7,1
12	3/8	M12MPEL3/8	M12MSEL3/8N	34,7	28,6	24,6	14,2	19,0	9,5
12	1/2	M12MPEL1/2	M12MSEL1/2N	36,3	33,3	26,2	19,1	22,0	9,5
12	3/4	M12MPEL3/4	M12MSEL3/4N	39,5	38,1	29,4	19,1	27,0	9,5
15	1/2	M15MPEL1/2	M15MSEL1/2N	37,9	34,9	27,8	19,1	22,0	11,9
16	3/8	M16MPEL3/8	M16MSEL3/8N	36,3	31,8	26,2	14,2	22,0	10,3
16	1/2	M16MPEL1/2	M16MSEL1/2N	37,1	34,1	27,0	19,1	22,0	12,7
16	3/4	M16MPEL3/4	M16MSEL3/4N	39,5	38,1	29,4	19,1	27,0	12,7
18	1/2	M18MPEL1/2	M18MSEL1/2N	39,5	38,1	29,4	19,1	27,0	12,7
18	3/4	M18MPEL3/4	M18MSEL3/4N	39,5	38,1	29,4	19,1	27,0	15,1
20	1/2	M20MPEL1/2	M20MSEL1/2N	42,6	42,2	32,5	19,1	33,0	12,7
20	3/4	M20MPEL3/4	M20MSEL3/4N	42,6	42,2	32,5	19,1	33,0	15,9
22	3/4	M22MPEL3/4	M22MSEL3/4N	42,6	38,1	32,5	19,1	33,0	18,3
25	3/4	M25MPEL3/4	M25MSEL3/4N	45,6	42,1	33,3	19,1	33,0	18,3
25	1	M25MPEL1	M25MSEL1N	45,6	46,8	33,3	23,9	33,0	22,2

E-MAIL : info@parsregulator.com
parsregulator@yahoo.com

www.parsregulator.com

Tel : 88 30 77 66
Fax: 88 83 41 40

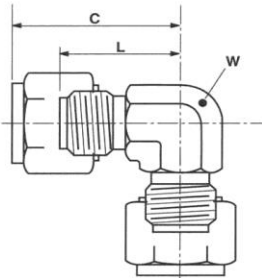
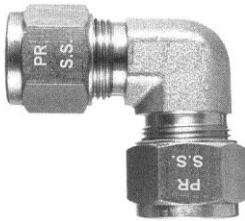
Union Elbow



Tube O.D inch	Part Number Pars Regulator	Part Number PARKER	C inch	L inch	W inch	Min.Bore inch
1/16	1PUEL1	1EE1	0.70	0.56	5/16	0.05
1/8	2PUEL2	2EE2	0.61	0.66	5/16	0.09
3/16	3PUEL3	3EE3	0.94	0.69	7/16	0.13
1/4	4PUEL4	4EE4	1.02	0.72	7/16	0.19
5/16	5PUEL5	5EE5	1.10	0.81	9/16	0.25
3/8	6PUEL6	6EE6	1.13	0.84	9/16	0.28
1/2	8PUEL8	8EE8	1.35	0.97	3/4	0.41
5/8	10PUEL10	10EE10	1.44	1.06	7/8	0.50
3/4	12PUEL12	12EE12	1.54	1.16	1.1/16	0.63
7/8	14PUEL14	14EE14	1.66	1.28	1.5/16	0.75
1	16PUEL16	16EE16	1.78	1.31	1.5/16	0.88

T
U
B
E
F
I
T
T
I
N
G
S

Union Elbow



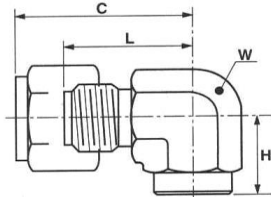
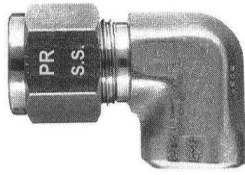
Tube O.D mm	Part Number Pars Regulator	Part Number PARKER	C mm	L mm	W mm	Min.Bore mm
3	PUELM3	EEM3	23,3	16,7	8,0	2,4
4	PUELM4	EEM4	24,1	17,5	8,0	3,0
6	PUELM6	EEM6	25,8	18,3	11,0	4,8
8	PUELM8	EEM8	28,1	20,6	14,0	6,4
10	PUELM10	EEM10	33,0	25,4	19,0	7,9
12	PUELM12	EEM12	34,7	24,6	19,0	9,5
15	PUELM15	EEM15	37,1	27,0	22,0	11,1
16	PUELM16	EEM16	37,1	27,0	22,0	12,7
18	PUELM18	EEM18	39,5	29,4	27,0	15,1
20	PUELM20	EEM20	42,6	32,5	36,5	15,9
22	PUELM22	EEM22	42,6	32,5	36,5	18,2
25	PUELM25	EEM25	45,6	33,3	36,5	22,2

E-MAIL : info@parsregulator.com
parsregulator@yahoo.com

www.parsregulator.com

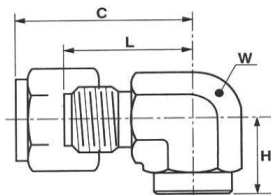
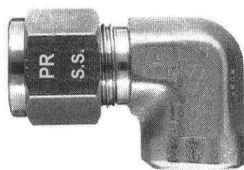
Tel : 88 30 77 66
Fax: 88 83 41 40

Female Elbow



Tube O.D inch	NPT thread	Part Number Pars Regulator	Part Number PARKER	C inch	H inch	L inch	W inch	Min. Bore inch
1/16	1/16	1FPEL1	1FEL1N	0.70	0.56	0.56	7/16	0.05
1/16	1/8	1FPEL2	1FEL2N	0.80	0.75	0.66	9/16	0.05
1/8	1/8	2FPEL2	2FEL2N	0.97	0.75	0.72	9/16	0.09
1/8	1/4	2FPEL4	2FEL4N	1.09	0.84	0.84	3/4	0.09
3/16	1/8	3FPEL2	3FEL2N	1.00	0.75	0.75	9/16	0.13
1/4	1/8	4FPEL2	4FEL2N	1.08	0.75	0.78	9/16	0.19
1/4	1/4	4FPEL4	4FEL4N	1.21	0.84	0.91	3/4	0.19
1/4	3/8	4FPEL6	4FEL6N	1.43	0.84	1.13	1.1/16	0.19
1/4	1/2	4FPEL8	4FEL8N	1.43	1.13	1.13	1.1/16	0.19
5/16	1/8	5FPEL2	5FEL2N	1.10	0.75	0.81	9/16	0.25
5/16	1/4	5FPEL4	5FEL4N	1.23	0.88	0.94	3/4	2.25
3/8	1/8	6FPEL2	6FEL2N	1.13	0.75	0.84	9/16	0.28
3/8	1/4	6FPEL4	6FEL4N	1.26	0.84	0.97	3/4	0.28
3/8	3/8	6FPEL6	6FEL6N	1.32	0.84	1.03	7/8	0.28
3/8	1/2	6FPEL8	6FEL8N	1.42	1.13	1.13	1.1/16	0.28
1/2	1/4	8FPEL4	8FEL4N	1.35	0.84	0.97	3/4	0.41
1/2	3/8	8FPEL6	8FEL6N	1.41	0.91	1.03	7/8	0.41
1/2	1/2	8FPEL8	8FEL8N	1.51	1.13	1.13	1.1/16	0.41
5/8	3/8	10FPEL6	10FEL6N	1.41	0.91	1.03	7/8	0.50
5/8	1/2	10FPEL8	10FEL8N	1.51	1.13	1.13	1.1/16	0.50
3/4	1/2	12FPEL8	12FEL8N	1.54	1.13	1.16	1.1/16	0.63
3/4	3/4	12FPEL12	12FEL12N	1.63	1.25	1.25	1.5/16	0.63
1	1	16FPEL16	16FEL16N	2.00	1.5	1.53	1.5/8	0.88

Female Elbow



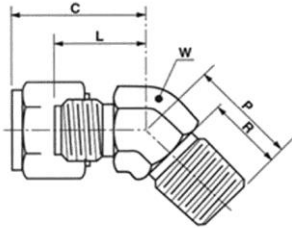
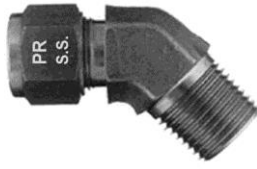
Tube O.D mm	NPT thread	Part Number Pars Regulator	Part Number PARKER	C mm	H mm	L mm	W mm	Min. Bore mm
6	1/8	M6FPEL1/8	M6FPEL1/8N	27,3	19,1	19,8	14,0	4,8
6	1/4	M6FPEL1/4	M6FPEL1/4N	30,5	21,4	23,0	19,0	4,8
8	1/4	M8FPEL1/4	M8FPEL1/4N	31,3	22,2	23,8	19,0	6,4
10	1/4	M10FPEL1/4	M10FPEL1/4N	32,2	21,4	24,6	19,0	7,9
10	3/8	M10FPEL3/8	M10FPEL3/8N	33,8	23,0	26,2	22,0	7,9
12	1/4	M12FPEL1/4	M12FPEL1/4N	34,7	21,4	24,6	19,0	9,5
12	3/8	M12FPEL3/8	M12FPEL3/8N	36,3	23,0	26,2	22,0	9,5
12	1/2	M12FPEL1/2	M12FPEL1/2N	38,7	28,6	28,6	27,0	9,5
16	3/8	M16FPEL3/8	M16FPEL3/8N	36,3	21,3	26,2	22,0	12,7
16	1/2	M16FPEL1/2	M16FPEL1/2N	38,7	28,6	28,6	27,0	12,7

E-MAIL : info@parsregulator.com
parsregulator@yahoo.com

www.parsregulator.com

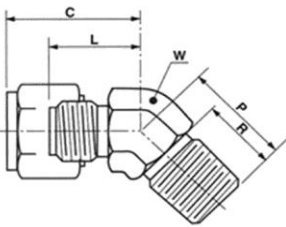
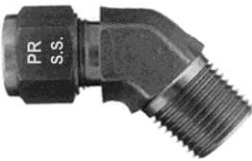
Tel : 88 30 77 66
Fax: 88 83 41 40

45° Male Elbow



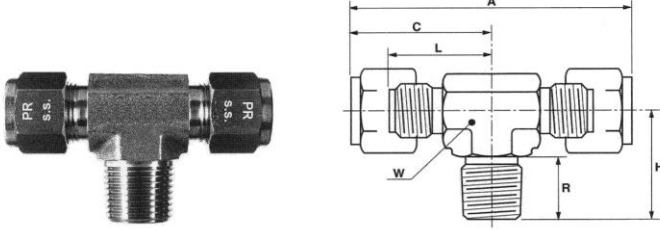
Tube O.D inch	NPT thread	Part Number Pars Regulator	Part Number PARKER	C inch	L inch	P inch	R inch	W inch	Min.Bore inch
1/16	1/16	1MPVEL1	1MVEL1N	0.58	0.44	0.56	0.38	3/8	0.05
1/8	1/8	2MPVEL2	2MVEL2N	0.78	0.53	0.52	0.38	7/16	0.09
3/16	1/8	3MPVEL2	3MVEL2N	0.81	0.56	0.58	0.38	7/16	0.13
1/4	1/8	4MPVEL2	4MVEL2N	0.93	0.63	0.66	0.38	9/16	0.19
1/4	1/4	4MPVEL4	4MVEL4N	0.96	0.66	0.86	0.56	9/16	0.19
5/16	1/8	5MPVEL2	5MVEL2N	0.95	0.66	0.66	0.38	9/16	0.19
3/8	1/4	6MPVEL4	6MVEL4N	1.01	0.72	0.86	0.56	9/16	0.28
1/2	3/8	8MPVEL6	8MVEL6N	1.13	0.75	0.95	0.56	3/4	0.41
5/8	1/2	10MPVEL8	10MVEL8N	1.19	0.81	1.17	0.75	7/8	0.50
3/4	3/4	12MPVEL12	12MVEL12N	1.22	0.84	1.20	0.75	1.1/16	0.63
7/8	3/4	14MPVEL12	14MVEL12N	1.32	0.94	1.27	0.75	1.5/16	0.72
1	1	16MPVEL16	16MVEL16N	1.66	1.19	1.48	0.94	1.5/16	0.88

45° Male Elbow



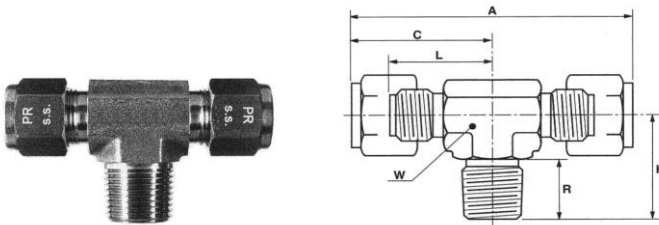
Tube O.D mm	NPT thread	Part Number Pars Regulator	Part Number PARKER	C mm	L mm	P mm	R mm	W mm	Min.Bore mm
6	1/8	M6MPVEL1/8	M6MVEL1/8N	17,7	16,0	16,8	9,5	14,0	4,8
6	1/4	M6MPVEL1/4	M6MVEL1/4N	17,7	16,0	21,8	14,3	14,0	4,8
8	1/8	M8MPVEL1/8	M8MVEL1/8N	18,6	16,8	16,8	9,5	14,0	4,8
10	1/4	M8MPVEL1/4	M8MVEL1/4N	19,5	19,0	24,1	14,3	19,0	7,1
12	3/8	M12MPVEL3/8	M12MVEL3/8N	22,0	19,0	24,1	14,3	19,0	9,5
12	1/2	M12MPVEL1/2	M12MVEL1/2N	22,0	20,6	29,7	19,0	22,0	9,5
16	1/2	M16MPVEL1/2	M16MVEL1/2N	22,0	20,6	29,7	19,0	22,0	12,7

Male Branch Tee



Tube O.D inch	NPT thread	Part Number Pars Regulator	Part Number PARKER	A inch	C inch	H inch	L inch	R inch	W inch	Min.Bore inch
1/8	1/8	2MPBT2	2MBT2N	1.82	0.91	0.72	0.66	0.34	5/16	0.09
3/16	1/8	3MPBT2	3MBT2N	1.88	0.94	0.75	0.69	0.38	7/16	0.13
1/4	1/8	4MPBT2	4MBT2N	2.03	1.02	0.78	0.72	0.38	7/16	0.19
1/4	1/4	4MPBT4	4MBT4N	2.15	1.08	0.94	0.78	0.56	9/16	0.19
5/16	1/8	5MPBT2	5MBT2N	2.21	1.10	0.81	0.81	0.38	9/16	0.19
5/16	1/4	5MPBT4	5MBT4N	2.21	1.10	1.00	0.81	0.56	9/16	0.25
3/8	1/4	6MPBT4	6MBT4N	2.27	1.13	1.00	0.84	0.56	9/16	0.28
3/8	3/8	6MPBT6	6MBT6N	2.53	1.26	1.13	0.97	0.56	3/4	0.28
1/2	3/8	8MPBT6	8MBT6N	2.71	1.35	1.13	0.97	0.56	3/4	0.41
1/2	1/2	8MPBT8	8MBT8N	2.83	1.41	1.31	1.03	0.75	7/8	0.41
5/8	1/2	10MPBT8	10MBT8N	2.89	1.44	1.34	1.08	0.75	7/8	0.50
3/4	3/4	12MPBT12	12MBT12N	3.09	1.54	1.50	1.16	0.75	1.1/16	0.63
7/8	3/4	14MPBT12	14MBT12N	3.33	1.66	1.50	1.28	0.75	1.5/16	0.72
1	3/4	16MPBT12	16MBT12N	3.56	1.78	1.66	1.31	0.75	1.5/16	0.72
1	1	16MPBT16	16MBT16N	3.56	1.78	1.84	1.31	0.94	1.5/16	0.88

Male Branch Tee



Tube O.D mm	NPT thread	Part Number Pars Regulator	Part Number PARKER	A mm	C mm	H mm	L mm	R mm	W mm	Min.Bore mm
6	1/8	M6MPBT1/8	M6MBT1/8N	51,6	25,8	19,8	18,3	9,7	11,0	4,8
6	1/4	M6MPBT1/4	M6MBT1/4N	54,6	27,3	23,8	19,8	14,2	14,0	4,8
8	1/8	M8MPBT1/8	M8MBT1/8N	56,2	28,1	20,6	20,6	9,7	14,0	4,8
8	1/4	M8MPBT1/4	M8MBT1/4N	56,2	28,1	25,4	20,6	14,2	14,0	6,4
10	1/4	M10MPBT1/4	M10MBT1/4N	66,0	33,0	28,6	25,4	14,2	19,0	7,9
10	3/8	M10MPBT3/8	M10MBT3/8N	66,0	33,0	28,6	25,4	14,2	19,0	7,9
12	1/4	M12MPBT1/4	M12MBT1/4N	69,4	34,7	28,6	24,6	14,2	19,0	9,5
12	3/8	M12MPBT3/8	M12MBT3/8N	69,4	34,7	28,6	24,6	14,2	19,0	9,5
12	1/2	M12MPBT1/2	M12MBT1/2N	72,6	36,3	33,3	26,2	19,1	22,0	9,5

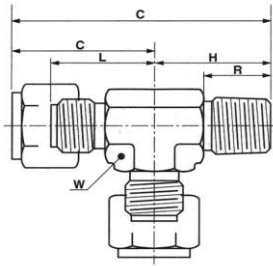
TUBEFITTINGS

E-MAIL : info@parsregulator.com
parsregulator@yahoo.com

www.parsregulator.com

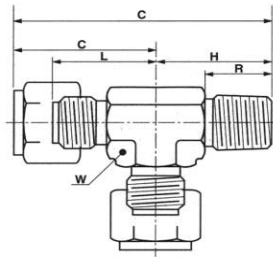
Tel : 88 30 77 66
Fax: 88 83 41 40

Male Run Tee



Tube O.D inch	NPT thread	Part Number Pars Regulator	Part Number PARKER	A inch	C inch	H inch	L inch	R inch	W inch	Min.Bore inch
1/8	1/8	2MPRT2	2MRT2N	1.63	0.91	0.72	0.66	0.34	5/16	0.09
1/8	1/4	2MPRT4	2MRT4N	1.91	0.97	0.94	0.72	0.56	9/16	0.09
3/16	1/8	3MPRT2	3MRT2N	1.66	0.94	0.72	0.69	0.38	7/16	0.13
1/4	1/8	4MPRT2	4MRT2N	1.80	1.02	0.78	0.72	0.38	7/16	0.19
1/4	1/4	4MPRT4	4MRT4N	2.02	1.08	0.94	0.78	0.56	9/16	0.19
5/16	1/8	5MPRT2	5MRT2N	1.91	1.10	0.81	0.81	0.38	9/16	0.19
5/16	1/4	5MPRT4	5MRT4N	2.10	1.10	1.00	0.81	0.56	9/16	0.25
3/8	1/4	6MPRT4	6MRT4N	2.13	1.13	1.00	0.84	0.56	9/16	0.28
3/8	3/8	6MPRT6	6MRT6N	2.39	1.26	1.13	0.97	0.56	3/4	0.28
1/2	3/8	8MPRT6	8MRT6N	2.48	1.35	1.13	0.97	0.56	3/4	0.41
1/2	1/2	8MPRT8	8MRT8N	2.72	1.41	1.31	1.03	0.75	7/8	0.41
5/8	1/2	10MPRT8	10MRT8N	2.78	1.44	1.34	1.06	0.75	7/8	0.50
3/4	3/4	12MPRT12	12MRT12N	3.04	1.54	1.50	1.16	0.75	1.1/16	0.63
7/8	3/4	14MPRT12	14MRT12N	3.16	1.66	1.50	1.28	0.75	1.5/16	0.72
1	3/4	16MPRT12	16MRT12N	3.44	1.78	1.66	1.31	0.75	1.5/16	0.72
1	1	16MPRT16	16MRT16N	3.62	1.78	1.84	1.31	0.94	1.5/16	0.88

Male Run Tee



Tube O.D mm	NPT thread	Part Number Pars Regulator	Part Number PARKER	A mm	C mm	H mm	L mm	R mm	W mm	Min.Bore mm
6	1/8	M6MPRT1/8	M6MRT1/8N	45,6	17,7	19,8	18,3	9,7	11,0	4,8
6	1/4	M6MPRT1/4	M6MRT1/4N	51,2	17,7	23,9	19,8	14,2	14,0	4,8
8	1/4	M8MPRT1/4	M8MRT1/4N	53,5	18,6	25,4	20,6	14,2	14,0	6,4
10	1/4	M10MPRT1/4	M10MRT1/4N	61,7	19,5	28,7	25,4	14,2	19,0	7,1
10	1/2	M10MPRT1/2	M10MRT1/2N	67,1	19,5	33,3	26,2	19,1	22,0	7,9
12	1/4	M12MPRT1/4	M12MRT1/4N	69,0	22,0	28,7	30,2	14,2	19,0	7,1
12	3/8	M12MPRT3/8	M12MRT3/8N	63,4	22,0	28,7	24,6	14,2	19,0	9,7
12	1/2	M12MPRT1/2	M12MRT1/2N	69,6	22,0	33,3	26,2	19,1	22,0	9,7

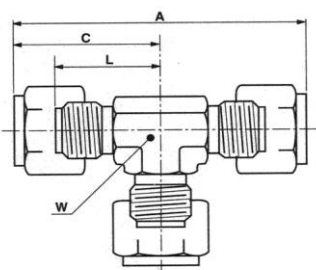
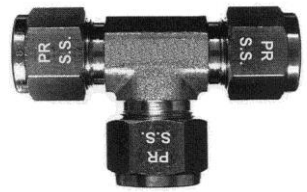
E-MAIL : info@parsregulator.com
parsregulator@yahoo.com

www.parsregulator.com

Tel : 88 30 77 66
Fax: 88 83 41 40

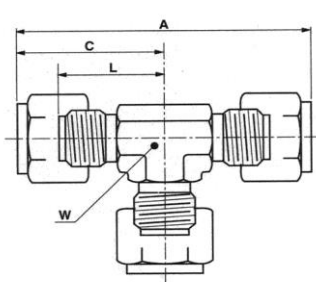
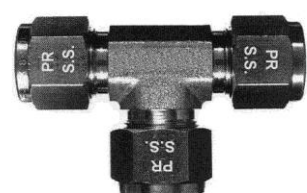
T
U
B
E
F
I
T
T
I
N
G
S

Union Tee



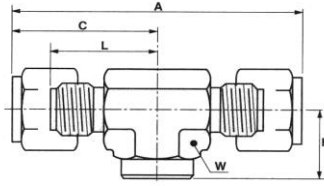
Tube O.D inch	Part Number Pars Regulator	Part Number PARKER	A inch	C inch	L inch	W inch	Min.Bore inch
1/16	1PUT1	1ET1	1.40	0.70	0.56	5/16	0.05
1/8	2PUT2	2ET2	1.82	0.91	0.66	5/16	0.09
3/16	3PUT3	3ET3	1.88	0.94	0.69	7/16	0.13
1/4	4PUT4	4ET4	2.03	1.02	0.72	7/16	0.19
5/16	5PUT5	5ET5	2.21	1.1	0.81	9/16	0.25
3/8	6PUT6	6ET6	2.27	1.13	0.84	9/16	0.28
1/2	8PUT8	8ET8	2.71	1.35	0.97	3/4	0.41
5/8	10PUT10	10ET10	2.89	1.44	1.06	7/8	0.50
3/4	12PUT12	12ET12	3.09	1.54	1.16	1.1/16	0.63
7/8	14PUT14	14ET14	33.3	1.66	1.28	1.5/16	0.75
1	16PUT16	16ET16	3.56	1.78	1.31	1.5/16	0.88

UnionTee



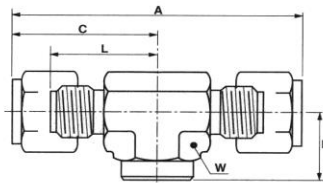
Tube O.D mm	Part Number Pars Regulator	Part Number PARKER	A mm	C mm	L mm	W mm	Min.Bore mm
2	PUTM2	ETM2	46,6	23,3	16,7	8,0	1,7
3	PUTM3	ETM3	46,6	23,3	16,7	8,0	2,4
4	PUTM4	ETM4	48,2	24,1	17,5	8,0	3,0
6	PUTM6	ETM6	51,6	25,8	18,3	11,0	4,8
8	PUTM8	ETM8	56,2	28,1	20,6	14,0	6,4
10	PUTM10	ETM10	66,0	33,0	25,4	19,0	7,9
12	PUTM12	ETM12	69,4	34,7	24,6	19,0	9,5
14	PUTM14	ETM14	74,2	37,1	27,0	22,0	11,1
15	PUTM15	ETM15	74,2	37,1	27,0	22,0	11,9
16	PUTM16	ETM16	74,2	37,1	27,0	22,0	12,7
18	PUTM18	ETM18	79,0	39,5	29,4	27,0	15,1
20	PUTM20	ETM20	85,2	42,6	32,5	36,5	15,9
22	PUTM22	ETM22	85,2	42,6	32,5	36,5	18,2
25	PUTM25	ETM25	91,2	45,6	33,3	36,5	22,2

Female Branch Tee



Tube O.D inch	NPT thread	Part Number Pars Regulator	Part Number PARKER	A inch	C inch	H inch	L inch	W inch	Min.Bore inch
1/8	1/8	2FPBT2	2FBT2N	2	1	0.75	0.75	9/16	0.09
3/16	1/8	3FPBT2	3FBT2N	2	1	0.75	0.75	9/16	0.13
1/4	1/8	4FPBT2	4FBT2N	2.16	1.08	0.75	0.78	9/16	0.19
1/4	1/4	4FPBT4	4FBT4N	2.42	1.21	0.84	0.91	3/4	0.19
5/16	1/8	5FPBT2	5FBT2N	2.26	1.13	0.75	0.84	9/16	0.25
3/8	1/4	6FPBT4	6FBT4N	2.52	1.26	0.84	0.97	3/4	0.28
1/2	3/8	8FPBT6	8FBT6N	2.82	1.41	0.91	1.03	7/8	0.41
1/2	1/2	8FPBT8	8FBT8N	3.02	1.51	1.13	1.13	1.1/16	0.41
5/8	1/2	10FPBT8	10FBT8N	3.02	1.51	1.13	1.13	1.1/16	0.50
3/4	3/4	12FPBT12	12FBT12N	3.26	1.63	1.25	1.25	1.5/16	0.63
7/8	3/4	14FPBT12	14FBT12N	3.26	1.63	1.25	1.25	1.5/16	0.75
1	3/4	16FPBT12	16FBT12N	3.56	1.78	1.25	1.31	1.5/16	0.88
1	1	16FPBT16	16FBT16N	4	2	1.50	1.53	1.5/8	0.88

Female Branch Tee



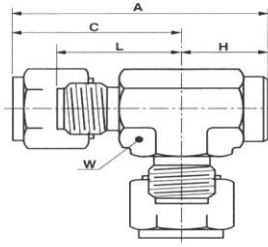
Tube O.D mm	NPT thread	Part Number Pars Regulator	Part Number PARKER	A mm	C mm	H mm	L mm	W mm	Min.Bore mm
6	1/8	M6FPBT1/8	M6FBT1/8N	46,3	27,3	19,0	19,8	14,0	4,8
6	1/4	M6FPBT1/4	M6FBT1/4N	51,9	30,5	21,4	23,0	19,0	4,8
8	1/8	M8FPBT1/8	M8FBT1/8N	50,6	31,6	19,0	24,1	14,0	6,4
10	1/4	M10FPBT1/4	M10FBT1/4N	53,6	32,2	21,4	24,6	19,0	7,9
12	3/8	M12FPBT3/8	M12FBT3/8N	59,3	36,3	23,0	26,2	22,0	9,5
16	1/2	M16FPBT1/2	M16FBT1/2N	64,3	38,7	28,6	28,6	27,0	12,7

E-MAIL : info@parsregulator.com
parsregulator@yahoo.com

www.parsregulator.com

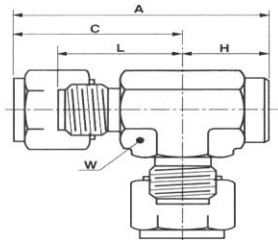
Tel : 88 30 77 66
Fax: 88 83 41 40

Female Run Tee



Tube O.D inch	NPT thread	Part Number Pars Regulator	Part Number PARKER	A inch	C inch	H inch	L inch	W inch	Min.Bore inch
1/8	1/8	2FPRT2	2FRT2N	1.75	1	0.75	0.75	9/16	0.09
3/16	1/8	3FPRT2	3FRT2N	1.75	1	0.75	0.75	9/16	0.13
1/4	1/8	4FPRT2	4FRT2N	1.83	1.08	0.75	0.78	9/16	0.19
1/4	1/4	4FPRT4	4FRT4N	2.05	1.21	0.84	0.91	3/4	0.19
5/16	1/8	5FPRT2	5FRT2N	1.85	1.10	0.75	0.81	9/16	0.25
3/8	1/4	6FPRT4	6FRT4N	2.10	1.26	0.84	0.97	3/4	0.28
1/2	3/8	8FPRT6	8FRT6N	2.32	1.41	0.91	1.03	7/8	0.41
1/2	1/2	8FPRT8	8FRT8N	2.64	1.51	1.13	1.13	1.1/16	0.41
3/4	3/4	12FPRT12	12FRT12N	2.88	1.63	1.25	1.25	1.5/16	0.63
7/8	1/2	14FPRT8	14FRT8N	2.64	1.51	1.13	1.13	1.1/16	0.63
7/8	3/4	14FPRT12	14FRT12N	2.88	1.63	1.25	1.25	1.5/16	0.75
1	3/4	16FPRT12	16FRT12N	3.03	1.78	1.25	1.31	1.5/16	0.88
1	1	16FPRT16	16FRT16N	3.50	2	1.50	1.53	1.5/8	0.88

Female Run Tee



Tube O.D mm	NPT thread	Part Number Pars Regulator	Part Number PARKER	A mm	C mm	H mm	L mm	W mm	Min.Bore mm
6	1/8	M6FPRT1/8	M6FRT1/8N	46,3	27,3	19,0	19,8	14,0	4,8
6	1/4	M6FPRT1/4	M6FRT1/4N	61,9	30,5	21,4	23,0	19,0	4,8
8	1/8	M8FPRT1/8	M8FRT1/8N	47,1	28,1	19,0	20,6	14,0	6,4
10	1/4	M10FPRT1/4	M10FRT1/4N	61,2	32,2	21,4	24,6	19,0	7,9
12	3/8	M12FPRT3/8	M12FRT3/8N	69,4	36,3	23,0	26,2	22,0	9,5
16	1/2	M16FPRT1/2	M16FRT1/2N	77,4	38,7	28,6	28,6	27,0	12,7

info@parsregulator.com
parsregulator@yahoo.com

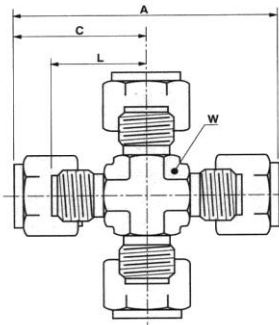
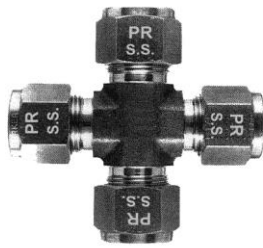
E-MAIL :

www.parsregulator.com

Tel : 88 30 77 66

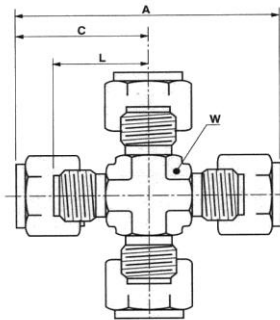
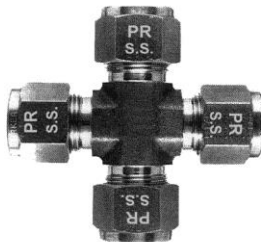
Fax: 88 83 41 40

Union Cross



Tube O.D inch	Part Number Pars Regulator	Part Number PARKER	A inch	C inch	L inch	W inch	Min.Bore inch
1/8	2PUC2	2ECR2	1.81	0.91	0.66	7/16	0.09
3/16	3PUC3	3ECR3	1.88	0.94	0.69	7/16	0.13
1/4	4PUC4	4ECR4	2.03	1.02	0.72	7/16	0.19
5/16	5PUC5	5ECR5	2.21	1.10	0.81	9/16	0.25
3/8	6PUC6	6ECR6	2.27	1.13	0.84	9/16	0.28
1/2	8PUC8	8ECR8	2.71	1.35	0.97	3/4	0.41
5/8	10PUC10	10ECR10	2.89	1.44	1.06	7/8	0.50
3/4	12PUC12	12ECR12	3.09	1.54	1.16	1.1/16	0.63
7/8	14PUC14	14ECR14	3.27	1.63	1.25	1.5/16	0.75
1	16PUC16	16ECR16	3.82	1.91	1.44	1.5/16	0.88

Union Cross



Tube O.D mm	Part Number Pars Regulator	Part Number PARKER	A mm	C mm	L mm	W mm	Min.Bore mm
3	PUCM3	ECRM3	46,8	23,4	16,8	8,0	2,4
4	PUCM4	ECRM4	48,2	24,1	17,5	8,0	3,0
6	PUCM6	ECRM6	51,6	25,8	18,3	11,0	4,8
8	PUCM8	ECRM8	56,2	28,1	20,6	14,0	6,4
10	PUCM10	ECRM10	66,0	33,0	25,4	19,0	7,9
12	PUCM12	ECRM12	69,4	34,7	24,6	19,0	9,5
16	PUCM16	ECRM16	72,6	36,3	26,2	22,0	12,7
18	PUCM18	ECRM18	79,0	39,5	29,4	27,0	15,1

Front Ferrule



Tube O.D inch	Part Number Pars Regulator	Part Number PARKER
1/16	1PF1	1FF1
1/8	2PF2	2FF2
3/16	3PF3	3FF3
1/4	4PF4	4FF4
5/16	5PF5	5FF5
3/8	6PF6	6FF6
1/2	8PF8	8FF8
5/8	10PF10	10FF10
3/4	12PF12	12FF12
7/8	14PF14	14FF14
1	16PF16	16FF16

Front Ferrule



Tube O.D mm	Part Number Pars Regulator	Part Number PARKER
2	PFM2	FFM2
3	PFM3	FFM3
4	PFM4	FFM4
6	PFM6	FFM6
8	PFM8	FFM8
10	PFM10	FFM10
12	PFM12	FFM12
14	PFM14	FFM14
15	PFM15	FFM15
16	PFM16	FFM16
18	PFM18	FFM18
20	PFM20	FFM20
22	PFM22	FFM22
25	PFM25	FFM25

Back Ferrule



Tube O.D inch	Part Number Pars Regulator	Part Number PARKER
1/16	1PB1	1BF1
1/8	2PB2	2BF2
3/16	3PB3	3BF3
1/4	4PB4	4BF4
5/16	5PB5	5BF5
3/8	6PB6	6BF6
1/2	8PB8	8BF8
5/8	10PB10	10BF10
3/4	12PB12	12BF12
7/8	14PB14	14BF14
1	16PB16	16BF16

Back Ferrule



Tube O.D mm	Part Number Pars Regulator	Part Number PARKER
2	PBM2	BFM2
3	PBM3	BFM3
4	PBM4	BFM4
6	PBM6	BFM6
8	PBM8	BFM8
10	PBM10	BFM10
12	PBM12	BFM12
14	PBM14	BFM14
15	PBM15	BFM15
16	PBM16	BFM16
18	PBM18	BFM18
20	PBM20	BFM20
22	PBM22	BFM22
25	PBM25	BFM25

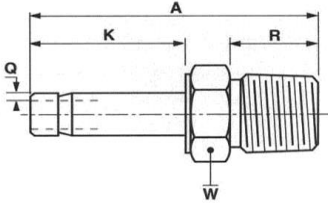
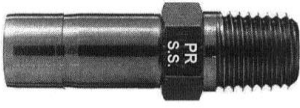
TUBEFITTINGS

E-MAIL : info@parsregulator.com
parsregulator@yahoo.com

www.parsregulator.com

Tel : 88 30 77 66
Fax: 88 83 41 40

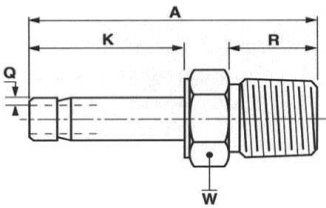
Male Adaptor



Tube O.D inch	NPT thread	Part Number Pars Regulator	Part Number PARKER	A inch	K inch	Q inch	R inch	W inch	Min.Bore inch
1/16	1/8	1MPA2	1MA2N	0.91	0.38	0.016	0.38	7/16	0.03
1/8	1/8	2MPA2	2MA2N	1.13	0.53	0.035	0.38	7/16	0.06
1/8	1/4	2MPA4	2MA4N	1.38	0.53	0.035	0.38	9/16	0.06
3/16	1/8	3MPA2	3MA2N	1.19	0.56	0.031	0.38	7/16	0.13
3/16	1/4	3MPA4	3MA4N	1.40	0.56	0.031	0.56	9/16	0.13
1/4	1/8	4MPA2	4MA2N	1.22	0.63	0.037	0.38	7/16	0.18
1/4	1/4	4MPA4	4MA4N	1.41	0.63	0.037	0.56	9/16	0.18
1/4	3/8	4MPA6	4MA6N	1.44	0.63	0.037	0.56	11/16	0.18
1/4	1/2	4MPA8	4MA8N	1.66	0.63	0.037	0.75	7/8	0.18
5/16	1/8	5MPA2	5MA2N	1.25	0.66	0.031	0.38	7/16	0.19
5/16	1/4	5MPA4	5MA4N	1.47	0.66	0.031	0.56	9/16	0.25
5/16	3/8	5MPA6	5MA6N	1.47	0.66	0.031	0.56	11/16	0.25
3/8	1/8	6MPA2	6MA2N	1.31	0.69	0.047	0.38	7/16	0.19
3/8	1/4	6MPA4	6MA4N	1.50	0.69	0.047	0.56	9/16	0.28
3/8	3/8	6MPA6	6MA6N	1.50	0.69	0.047	0.56	11/16	0.28
3/8	1/2	6MPA8	6MA8N	1.72	0.69	0.047	0.75	7/8	0.28
1/2	1/4	8MPA4	8MA4N	1.72	0.91	0.055	0.56	9/16	0.28
1/2	3/8	8MPA6	8MA6N	1.75	0.91	0.055	0.56	11/16	0.39
1/2	1/2	8MPA8	8MA8N	1.94	0.91	0.055	0.75	7/8	0.39
5/8	1/2	10MPA8	10MA8N	2.00	0.97	0.063	0.75	7/8	0.50
3/4	1/2	12MPA8	12MA8N	2.00	0.97	0.078	0.75	7/8	0.50
3/4	3/4	12MPA12	12MA12N	2.03	0.97	0.078	0.75	1.1/16	0.59
1	3/4	16MPA12	16MA12N	2.28	1.22	0.102	0.75	1.1/16	0.72
1	1	16MPA16	16MA16N	2.56	1.22	0.102	0.94	1.3/8	0.80

TUBEFITTINGS

Male Adaptor



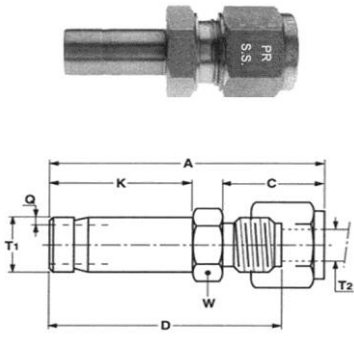
Tube O.D mm	NPT thread	Part Number Pars Regulator	Part Number PARKER	A mm	K mm	Q mm	R mm	W mm	Min.Bore mm
3	1/8	M3MPA1/8	M3MA1/8N	29,4	13,5	0,6	9,7	12,0	1,8
4	1/8	M4MPA1/8	M4MA1/8N	29,4	14,3	1,0	9,7	12,0	2,0
6	1/8	M6MPA1/8	M6MA1/8N	31,0	15,9	1,0	9,7	12,0	4,0
6	1/4	M6MPA1/4	M6MA1/4N	35,7	15,9	1,0	14,2	14,0	4,0
8	1/4	M8MPA1/4	M8MA1/4N	37,3	16,7	0,8	14,2	14,0	6,4
8	3/8	M8MPA3/8	M8MA3/8N	37,3	16,7	0,8	14,2	12,0	6,4
10	1/4	M10MPA1/4	M10MA1/4N	38,1	17,5	1,3	14,2	14,0	7,1
10	3/8	M10MPA3/8	M10MA3/8N	38,1	17,5	1,3	14,2	18,0	7,5
10	1/2	M10MPA1/2	M10MA1/2N	44,5	17,5	1,3	19,1	22,0	7,5
12	1/4	M12MPA1/4	M12MA1/4N	43,7	23,0	1,4	14,2	14,0	7,1
12	3/8	M12MPA3/8	M12MA3/8N	44,5	23,0	1,4	14,2	27,0	9,1
12	1/2	M12MPA1/2	M12MA1/2N	49,2	23,0	1,4	19,1	22,0	9,1
16	1/2	M16MPA1/2	M16MA1/2N	50,8	24,6	1,7	19,1	22,0	12,7
16	3/4	M16MPA3/4	M16MA3/4N	51,6	24,6	1,7	19,1	27,0	12,7
18	1/2	M18MPA1/2	M18MA1/2N	50,8	24,6	2,0	19,1	22,0	12,7
18	3/4	M18MPA3/4	M18MA3/4N	51,6	24,6	2,0	19,1	27,0	14,0
20	3/4	M20MPA3/4	M20MA3/4N	52,4	25,4	2,5	19,1	27,0	15,1
25	1	M25MPA1	M25MA1N	65,9	31,8	2,6	23,9	35,0	19,8

E-MAIL : info@parsregulator.com
Parsregulator@yahoo.com

www.parsregulator.com

Tel : 88 30 77 66
Fax: 88 83 41 40

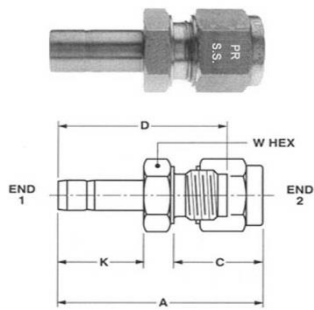
Tube End Reducer



Tube O.D End 1 inch	Tube O.D End 2 inch	Part Number Pars Regulator	Part Number PARKER	A inch	C inch	D inch	K inch	Q inch	W inch	Min. Bore inch
1/8	1/16	2PUA1	2TUR1	1.14	0.43	1.00	0.53	0.035	5/16	0.05
1/8	1/4	2PUA4	2TUR4	1.46	0.70	1.16	0.53	0.035	1/2	0.06
3/16	1/16	3PUA1	3TUR1	1.17	0.43	1.03	0.56	0.031	5/16	0.05
3/16	1/8	3PUA2	3TUR2	1.34	0.60	1.09	0.56	0.031	7/16	0.09
1/4	1/16	4PUA1	4TUR1	1.23	0.43	0.09	0.63	0.037	7/16	0.05
1/4	1/8	4PUA2	4TUR2	1.41	0.60	1.16	0.63	0.037	7/16	0.09
1/4	3/16	4PUA3	4TUR3	1.45	0.63	1.20	0.63	0.037	7/16	0.13
1/4	1/4	4PUA4	4TUR4	1.55	0.70	1.25	0.63	0.037	1/2	0.18
1/4	3/8	4PUA6	4TUR6	1.63	0.76	1.34	0.63	0.037	5/8	0.18
5/16	1/4	5PUA4	5TUR4	1.58	0.70	1.28	0.66	0.031	1/2	0.19
3/8	1/8	6PUA2	6TUR2	1.47	0.60	1.22	0.69	0.047	7/16	0.09
3/8	1/4	6PUA4	6TUR4	1.61	0.70	1.31	0.69	0.047	1/2	0.19
3/8	5/16	6PUA5	6TUR5	1.65	0.73	1.36	0.69	0.047	9/16	0.25
1/2	1/4	8PUA4	8TUR4	1.83	0.70	1.53	0.91	0.055	9/16	0.19
1/2	5/16	8PUA5	8TUR5	1.87	0.73	1.58	0.91	0.055	9/16	0.25
1/2	3/8	8PUA6	8TUR6	1.92	0.76	1.63	0.91	0.055	5/8	0.28
5/8	1/4	10PUA4	10TUR4	1.90	0.70	1.59	0.97	0.063	11/16	0.19
5/8	3/8	10PUA6	10TUR6	1.98	0.76	1.69	0.97	0.063	11/16	0.28
5/8	1/2	10PUA8	10TUR8	2.10	0.86	1.72	0.97	0.063	13/16	0.41
3/4	3/8	12PUA6	12TUR6	1.98	0.76	1.69	0.97	0.078	13/16	0.28
3/4	1/2	12PUA8	12TUR8	2.10	0.86	1.72	0.97	0.078	13/16	0.41
1	1/2	16PUA8	16TUR8	2.35	0.86	1.97	1.22	0.102	1.1/16	0.41
1	3/4	16PUA12	16TUR12	2.44	0.86	2.06	1.22	0.102	1.1/16	0.63

TUBEFITTINGS

Tube End Reducer



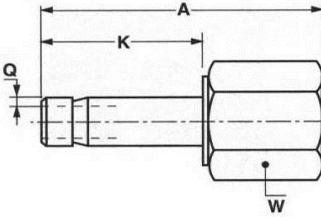
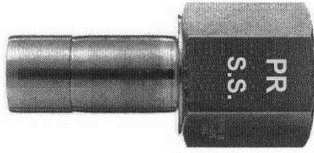
Tube O.D. End1 inch	Tube O.D. End2 mm	Part Number Pars Regulator	Part Number PARKER	A inch	C inch	D inch	K inch	W a/f hex inch	min. Bore inch
1/8	3	2PUAM3-316	2TUCM3-316	1.35	0.60	1.09	0.53	1/2	0.055
1/4	3	4PUAM3-316	4TUCM3-316	1.42	0.60	1.16	0.63	1/2	0.188
1/4	6	4PUAM6-316	4TUCM6-316	1.55	0.70	1.25	0.63	9/16	0.188
5/16	6	5PUAM36-316	5TUCM6-316	1.58	0.70	1.28	0.66	9/16	0.250
3/8	6	6PUAM6-316	6TUCM6-316	1.61	0.70	1.31	0.69	9/16	0.281
1/2	6	8PUAM6-316	8TUCM6-316	1.83	0.70	1.53	0.91	9/16	0.391
3/8	8	6PUAM8-316	6TUCM8-316	1.65	0.73	1.36	0.69	9/16	0.281
1/2	8	8PUAM8-316	8TUCM8-316	1.85	0.73	1.58	0.91	9/16	0.391
3/8	10	6PUAM10-316	6TUCM10-316	1.75	0.77	1.45	0.69	11/16	0.281
1/2	10	8PUAM10-316	8TUCM10-316	1.93	0.77	1.63	0.91	7/8	0.391
1/2	12	8PUAM12-316	8TUCM12-316	2.06	0.87	1.66	0.91	7/8	0.391
3/4	12	12PUAM12-316	12TUCM12-316	2.12	0.87	1.72	0.97	7/8	0.594
3/4	18	12PUAM18-316	12TUCM18-316	2.27	0.87	1.87	0.97	11/16	0.594

E-MAIL : info@parsregulator.com
parsregulator@yahoo.com

www.parsregulator.com

Tel : 88 30 77 66
Fax: 88 83 41 40

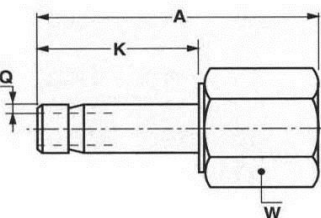
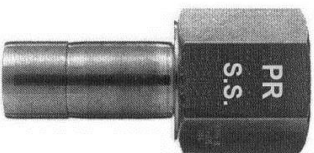
Female Adaptor



Tube O.D inch	NPT thread	Part Number Pars Regulator	Part Number PARKER	A inch	K inch	Q inch	W inch	Min. Bore inch
1/16	1/8	1FPA2	1FA2N	0.91	0.38	0.016	9/16	0.03
1/8	1/8	2FPA2	2FA2N	1.06	0.53	0.035	9/16	0.06
1/8	1/4	2FPA4	2FA4N	1.25	0.53	0.035	3/4	0.06
3/16	1/8	3FPA2	3FA2N	1.09	0.56	0.031	9/16	0.13
3/16	1/4	3FPA4	3FA4N	1.28	0.56	0.031	3/4	0.13
1/4	1/8	4FPA2	4FA2N	1.16	0.63	0.037	9/16	0.18
1/4	1/4	4FPA4	4FA4N	1.34	0.63	0.037	3/4	0.18
1/4	3/8	4FPA6	4FA6N	1.41	0.63	0.037	7/8	0.18
1/4	1/2	4FPA8	4FA8N	1.59	0.63	0.037	1.1/16	0.18
5/16	1/4	5FPA4	5FA4N	1.38	0.66	0.031	3/4	0.25
3/8	1/8	6FPA2	6FA2N	1.22	0.69	0.047	9/16	0.28
3/8	1/4	6FPA4	6FA4N	1.41	0.69	0.047	3/4	0.28
3/8	3/8	6FPA6	6FA6N	1.47	0.69	0.047	7/8	0.28
3/8	1/2	6FPA8	6FA8N	1.66	0.69	0.047	1.1/16	0.28
1/2	1/4	8FPA4	8FA4N	1.63	0.91	0.055	3/4	0.39
1/2	3/8	8FPA6	8FA6N	1.69	0.91	0.055	7/8	0.39
1/2	1/2	8FPA8	8FA8N	1.88	0.91	0.055	1.1/16	0.39
5/8	3/8	10FPA6	10FA6N	1.75	0.97	0.063	7/8	0.50
5/8	1/2	10FPA8	10FA8N	1.94	0.97	0.063	1.1/16	0.50
5/8	3/4	10FPA12	10FA12N	2.00	0.97	0.063	1.5/16	0.50
3/4	1/2	12FPA8	12FA8N	1.94	0.97	0.078	1.1/16	0.59
3/4	3/4	12FPA12	12FA12N	2	0.97	0.078	1.5/16	0.59
3/4	1	12FPA16	12FA16N	2.38	0.97	0.078	1.5/8	0.59
7/8	3/4	14FPA12	14FA12N	2.06	1.03	0.094	1.5/16	0.69
1	3/4	16FPA12	16FA12N	2.25	0.22	0.102	1.5/16	0.80
1	1	16FPA16	16FA16N	2.63	1.22	0.102	1.5/8	0.80

TUBEFITTINGS

Female Adaptor



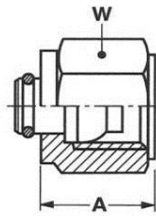
Tube O.D mm	NPT thread	Part Number Pars Regulator	Part Number PARKER	A mm	K mm	Q mm	W mm	Min. Bore mm
3	1/8	M3FPA1/8	M3FA1/8N	31,3	13,5	0,6	14,0	1,3
4	1/8	M4FPA1/8	M4FA1/8N	29,4	14,3	1,0	14,0	2,0
6	1/8	M6FPA1/8	M6FA1/8N	29,4	15,9	1,0	14,0	4,0
6	1/4	M6FPA1/4	M6FA1/4N	34,1	15,9	1,0	19,0	4,0
8	1/8	M8FPA1/8	M8FA1/8N	35,5	16,7	0,8	14,0	6,4
8	1/4	M8FPA1/4	M8FA1/4N	35,1	16,7	0,8	19,0	6,4
8	3/8	M8FPA3/8	M8FA3/8N	36,5	16,7	0,8	22,0	6,4
10	1/4	M10FPA1/4	M10FA1/4N	37,3	17,5	1,3	19,0	7,5
10	3/8	M10FPA3/8	M10FA3/8N	37,3	17,5	1,3	22,0	7,5
10	1/2	M10FPA1/2	M10FA1/2N	42,1	17,5	1,3	27,0	7,5
12	1/4	M12FPA1/4	M12FA1/4N	41,3	23,0	1,4	19,0	9,1
12	3/8	M12FPA3/8	M12FA3/8N	42,9	23,0	1,4	22,0	9,1
12	1/2	M12FPA1/2	M12FA1/2N	47,6	23,0	1,4	27,0	9,1
16	1/2	M16FPA1/2	M16FA1/2N	49,2	24,6	1,7	27,0	12,7
18	3/4	M18FPA3/4	M18FA3/4N	52,4	24,6	2,0	33,0	14,0
20	3/4	M20FPA3/4	M20FA3/4N	53,2	25,4	2,5	33,0	15,1
25	1	M25FPA1	M25FA1N	66,7	31,8	2,6	41,0	19,8

E-MAIL : info@parsregulator.com
parsregulator@yahoo.com

www.parsregulator.com

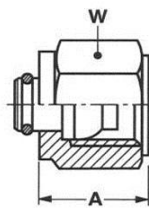
Tel : 88 30 77 66
Fax: 88 83 41 40

Plug



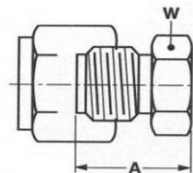
Tube O.D inch	UN thread	Part Number Pars Regulator	Part Number PARKER	A inch	W inch
1/16	10-32UNF	1PP1	1BLP1	0.31	5/16
1/8	5/16-20UN	2PP2	2BLP2	0.47	7/16
3/16	3/8-20UN	3PP3	3BLP3	0.47	1/2
1/4	7/16-20UNF	4PP4	4BLP4	0.50	9/16
5/16	1/2-20UNF	5PP5	5BLP5	0.53	5/8
3/8	9/16-20UN	6PP6	6BLP6	0.56	11/16
1/2	3/4-20UNEF	8PP8	8BLP8	0.69	7/8
5/8	7/8-20UNEF	10PP10	10BLP10	0.69	1
3/4	1-20UNEF	12PP12	12BLP12	0.69	1.1/8
7/8	1.1/8-20UN	14PP14	14BLP14	0.69	1.1/4
1	1.5/16-20UN	16PP16	16BLP16	0.81	1.1/2

Plug



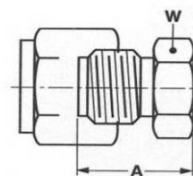
Tube O.D mm	UN thread	Part Number Pars Regulator	Part Number PARKER	A mm	W mm
2	5/15-20UN	PPM2	BLPM2	11,9	12,0
3	5/16-20UN	PPM3	BLPM3	11,9	12,0
4	3/8-20UN	PPM4	BLPM4	11,9	12,0
6	7/16-20UNF	PPM6	BLPM6	12,7	14,0
8	1/2-20UNF	PPM8	BLPM8	13,5	16,0
10	5/8-20UN	PPM10	BLPM10	15,1	19,0
12	3/4-20UNEF	PPM12	BLPM12	17,5	22,0
14	7/8-20UNEF	PPM14	BLPM14	17,5	25,0
15	7/8-20UNEF	PPM15	BLPM15	17,5	25,0
16	7/8-20UNEF	PPM16	BLPM16	17,5	25,0
18	1-20UNEF	PPM18	BLPM18	17,5	30,0
20	1.1/8-20UN	PPM20	BLPM20	17,5	32,0
22	1.1/8-20UN	PPM22	BLPM22	17,5	32,0
25	1.5/16-20UN	PPM25	BLPM25	20,6	38,0

Cap



Tube O.D inch	Part Number Pars Regulator	Part Number PARKER	A inch	W inch
1/16	1PCP1	1BLEN1	0.44	5/16
1/8	2PCP2	2BLEN2	0.53	7/16
3/16	3PCP3	3BLEN3	0.58	7/16
1/4	4PCP4	4BLEN4	0.63	1/2
5/16	5PCP5	5BLEN5	0.67	9/16
3/8	6PCP6	6BLEN6	0.72	5/8
1/2	8PCP8	8BLEN8	0.75	13/16
5/8	10PCP10	10BLEN10	0.78	15/16
3/4	12PCP12	12BLEN12	0.84	1.1/16
7/8	14PCP14	14BLEN14	0.91	1.3/16
1	16PCP16	16BLEN16	1.03	1.3/8

Cap



Tube O.D mm	Part Number Pars Regulator	Part Number PARKER	A mm	W mm
2	PCPM2	BLENM2	13,5	12,0
3	PCPM3	BLENM3	13,5	12,0
4	PCPM4	BLENM4	14,3	12,0
6	PCPM6	BLENM6	15,9	14,0
8	PCPM8	BLENM8	17,1	15,0
10	PCPM10	BLENM10	19,1	18,0
12	PCPM12	BLENM12	19,1	22,0
14	PCPM14	BLENM14	19,8	24,0
15	PCPM15	BLENM15	19,8	24,0
16	PCPM16	BLENM16	19,8	24,0
18	PCPM18	BLENM18	21,3	27,0
20	PCPM20	BLENM20	23,9	30,0
22	PCPM22	BLENM22	23,9	30,0
25	PCPM25	BLENM25	26,2	35,0

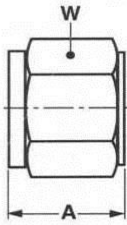
info@parsregulator.com
parsregulator@yahoo.com

E-MAIL :

www.parsregulator.com

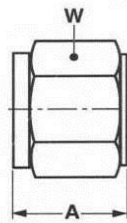
Tel : 88 30 77 66
Fax: 88 83 41 40

Tube Nut



Tube O.D inch	UN thread	Part Number Pars Regulator	Part Number PARKER	A inch	W inch
1/16	10-32UNF	1PN1	1NU1	0.31	5/16
1/8	5/16-20UN	2PN2	2NU2	0.47	7/16
3/16	3/8-20UN	3PN3	3NU3	0.47	1/2
1/4	7/16-20UNF	4PN4	4NU4	0.50	9/16
5/16	1/2-20UNF	5PN5	5NU5	0.53	5/8
3/8	9/16-20UN	6PN6	6NU6	0.56	11/16
1/2	3/4-20UNEF	8PN8	8NU8	0.69	7/8
5/8	7/8-20UNEF	10PN10	10NU10	0.69	1
3/4	1-20UNEF	12PN12	12NU12	0.69	1.1/8
7/8	1.1/8-20UN	14PN14	14NU14	0.69	1.1/4
1	1.5/16-20UN	16PN16	16NU16	0.81	1.1/2

Tube Nut



Tube O.D mm	UN thread	Part Number Pars Regulator	Part Number PARKER	A mm	W mm
2	5/16-20UN	PNM2	NUM2	11,9	12,0
3	5/16-20UN	PNM3	NUM3	11,9	12,0
4	3/8-20UN	PNM4	NUM4	11,9	12,0
6	7/16-20UNF	PNM6	NUM6	12,7	14,0
8	1/2-20UNF	PNM8	NUM8	13,5	16,0
10	5/8-20UN	PNM10	NUM10	15,1	19,0
12	3/4-20UNEF	PNM12	NUM12	17,5	22,0
14	7/8-20UNEF	PNM14	NUM14	17,5	25,0
15	7/8-20UNEF	PNM15	NUM15	17,5	25,0
16	7/8-20UNEF	PNM16	NUM16	17,5	25,0
18	1-20UNEF	PNM18	NUM18	17,5	30,0
20	1.1/8-20UN	PNM20	NUM20	17,5	32,0
22	1.1/8-20UN	PNM22	NUM22	17,5	32,0
25	1.5/16-20UN	PNM25	NUM25	20,6	38,0

E-MAIL : info@parsregulator.com
Parsregulator@yahoo.com

www.parsregulator.com

Tel : 88 30 77 66
Fax: 88 83 41 40

info@parsregulator.com
parsregulator@yahoo.com

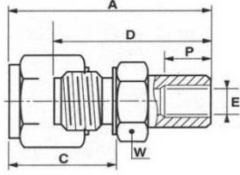
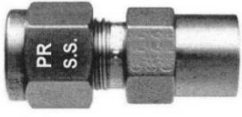
E-MAIL :

www.parsregulator.com

Tel : 88 30 77 66
Fax: 88 83 41 40

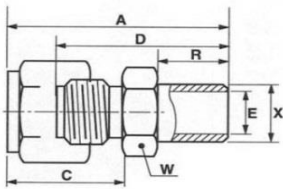
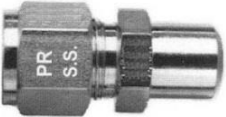
T
U
B
E
F
I
T
T
I
N
G
S

Socket Weld Connector



Tube O.D inch	Socket weld tube O.D	Part Number Pars Regulator	Part Number PARKER	A inch	B inch	C inch	D inch	P inch	W inch
1/8	1/8	2-2SPC	2-2ZHLW	1.13	0.60	0.88	0.094	0.16	7/16
1/4	1/4	4-4SPC	4-4ZHLW	1.33	0.70	1.03	0.188	0.25	1/2
3/8	3/8	6-6SPC	6-6ZHLW	1.48	0.76	1.19	0.281	0.34	5/8
1/2	1/2	8-8SPC	8-8ZHLW	1.60	0.86	1.22	0.406	0.41	13/16
5/8	5/8	10-10SPC	10-10ZHLW	1.63	0.86	1.25	0.500	0.47	15/16
3/4	3/4	12-12SPC	12-12ZHLW	1.69	0.86	1.31	0.625	0.50	1.1/8
1	1	16-16SPC	16-16ZHLW	2.06	1.04	1.59	0.875	0.56	1.3/8

Buttweld Connector

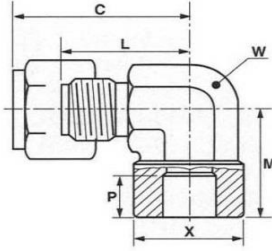
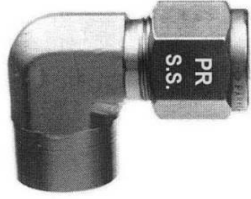


Tube O.D inch	Buttweld pipe N.B.	Part Number Pars Regulator	Part Number PARKER	A inch	C inch	D inch	E inch	R inch	W inch	X inch
1/8	1/8	2-1/8BPC	2-1/8ZHLW2	1.16	0.60	0.91	0.094	0.38	7/16	0.405
3/16	1/8	3-1/8BPC	3-1/8ZHLW2	1.19	0.63	0.94	0.125	0.38	7/16	0.405
1/4	1/8	4-1/8BPC	4-1/8ZHLW2	1.27	0.70	0.97	0.188	0.38	1.2	0.405
1/4	1/4	4-1/4BPC	4-1/4ZHLW2	1.49	0.70	1.19	0.188	0.56	9/16	0.504
3/8	1/4	6-1/4BPC	6-1/4ZHLW2	1.57	0.76	1.28	0.281	0.56	5/8	0.504
3/8	3/8	6-3/8BPC	6-3/8ZHLW2	1.60	0.76	1.31	0.281	0.56	3/4	0.675
3/8	1/2	6-1/2BPC	6-1/2ZHLW2	1.79	0.76	1.50	0.281	0.75	7/8	0.840
1/2	3/8	8-3/8BPC	8-3/8ZHLW2	1.69	0.86	1.31	0.406	0.56	13/16	0.675
1/2	1/2	8-1/2BPC	8-1/2ZHLW2	1.88	0.86	1.50	0.406	0.75	7/8	0.840
5/8	1/2	10-1/2BPC	10-1/2ZHLW2	1.88	0.86	1.50	0.50	0.75	15/16	0.840
3/4	3/4	12-3/4BPC	12-3/4ZHLW2	1.91	0.86	1.53	0.625	0.75	1.1/8	1.060
1	1	16-1BPC	16-1ZHLW2	2.44	1.04	1.97	0.875	0.94	1.3/8	1.315

Metric Tubing

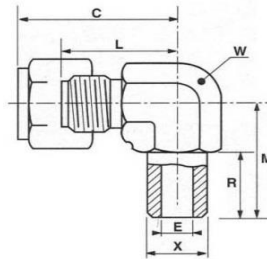
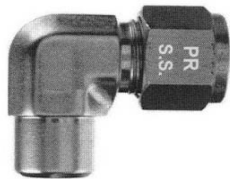
Tube O.D mm	Buttweld pipe N.B.	Part Number Pars Regulator	Part Number PARKER	A mm	C mm	D mm	R mm	W mm	X mm	min bore mm
3	1/8	BPC3-1/8	ZHLW2 3-1/8	29,7	15,3	23,1	9,7	12	10,3	2,4*
4	1/8	BPC4-1/8	ZHLW2 4-1/8	30,7	16,1	24,1	9,7	12	10,3	2,4*
6	1/8	BPC6-1/8	ZHLW2 6-1/8	32,9	17,7	25,4	9,7	14	10,3	4,8
6	1/4	BPC6-1/4	ZHLW2 6-1/4	37,7	17,7	30,2	14,2	14	13,7	4,8*
8	1/8	BPC8-1/8	ZHLW2 8-1/8	34,2	18,6	26,7	9,7	15	10,3	5,1
8	1/4	BPC8-1/4	ZHLW2 8-1/4	38,7	18,6	31,2	14,2	15	13,7	6,4
8	1/2	BPC8-1/2	ZHLW2 8-1/2	44,8	18,6	37,3	19,1	22	21,3	6,4*
10	1/4	BPC10-1/4	ZHLW2 10-1/4	40,9	19,5	33,3	14,2	18	13,7	7,1
10	3/8	BPC10-3/8	ZHLW2 10-3/8	40,1	19,5	32,5	14,2	18	17,2	7,9*
10	1/2	BPC10-1/2	ZHLW2 10-1/2	45,7	19,5	38,1	19,1	22	21,3	7,9*
12	1/4	BPC12-1/4	ZHLW2 12-1/4	43,4	22,0	33,3	14,2	22	13,7	7,1
12	3/8	BPC12-3/8	ZHLW2 12-3/8	43,4	22,0	33,3	14,2	22	17,2	9,5
12	1/2	BPC12-1/2	ZHLW2 12-1/2	48,2	22,0	38,1	19,1	22	21,3	9,5*
16	1/2	BPC16-1/2	ZHLW2 16-1/2	49,0	22,0	38,9	19,1	24	21,3	12,7*
18	1/2	BPC18-1/2	ZHLW2 18-1/2	50,5	22,0	40,4	19,1	27	21,3	13,5

Socket Weld Elbow



Tube O.D inch	Socket weld tube O.D	Part Number Pars Regulator	Part Number PARKER	C inch	L inch	M inch	P inch	W inch	X inch
1/8	1/8	2-2SPEL	2-2ZELW	0.91	0.66	0.63	0.16	7/16	0.38
3/16	3/16	3-3SPEL	3-3ZELW	0.97	0.72	0.69	0.20	7/16	0.44
1/4	1/4	4-4SPEL	4-4ZELW	1.08	0.78	0.69	0.25	9/16	0.50
3/8	3/8	6-6SPEL	6-6ZELW	1.26	0.97	0.91	0.34	3/4	0.63
1/2	1/2	8-8SPEL	8-8ZELW	1.35	0.97	1.03	0.41	3/4	0.78
5/8	5/8	10-10SPEL	10-10ZELW	1.54	1.16	1.16	0.47	1.1/16	0.94
3/4	3/4	12-12SPEL	12-12ZELW	1.54	1.16	1.16	0.50	1.1/16	1.09
1	1	16-16SPEL	16-16ZELW	1.78	1.31	1.47	0.56	1.5/16	1.38

Buttweld Elbow



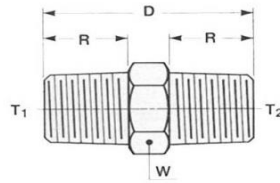
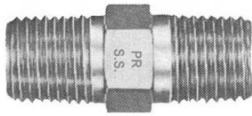
Tube O.D inch	Buttweld pipe N.B.	Part Number Pars Regulator	Part Number PARKER	C inch	E inch	L inch	M inch	R inch	W inch	X Inch
1/8	1/8	2-1/8BPEL	2-1/8ZHLW2	0.91	0.094	0.66	0.72	0.38	7/16	0.405
3/16	1/8	3-1/8BPEL	3-1/8ZHLW2	0.94	0.125	0.69	0.75	0.38	3/8	0.405
1/4	1/8	4-1/8BPEL	4-1/8ZHLW2	1.01	0.188	0.72	0.78	0.38	7/16	0.405
1/4	1/4	4-1/4BPEL	4-1/4ZHLW2	1.08	0.188	0.78	0.94	0.56	9/16	0.540
3/8	1/4	6-1/4BPEL	6-1/4ZHLW2	1.13	0.281	0.84	1.00	0.56	9/16	0.540
1/2	3/8	8-3/8BPEL	8-3/8ZHLW2	1.26	0.406	0.97	1.13	0.56	3/4	0.675
1/2	1/2	8-1/2BPEL	8-1/2ZHLW2	1.32	0.406	1.03	1.31	0.75	7/8	0.840
5/8	1/2	10-1/2BPEL	10-1/2ZHLW2	1.41	0.500	1.03	1.31	0.75	7/8	0.840
3/4	3/4	12-3/4BPEL	12-3/4ZHLW2	1.54	0.625	1.16	1.50	0.75	1.1/16	1.060
1	3/4	16-3/4BPEL	16-3/4ZHLW2	1.78	0.875	1.31	1.63	0.75	1.5/16	1.060
1	1	16-1BPEL	16-1ZHLW2	1.78	0.875	1.31	1.84	1.00	1.5/16	1.315

E-MAIL : info@parsregulator.com
parsregulator@yahoo.com

www.parsregulator.com

Tel : 88 30 77 66
Fax: 88 83 41 40

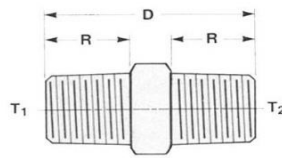
Male Hex Nipple



Part Number Pars Regulator	Part Number PARKER	NPT thread male		W HEX.	D		R		Working pressure			
		T1	T2		in.	mm	in.	mm	Brass		Stainless steel	
									PSI	Bar	PSI	Bar
1-1PHN	1-1MHN	1/16	1/16	7/16	1.06	27,0	.38	9,7	6000	410	10000	690
2-1PHN	2-1MHN	1/8	1/16	7/16	1.06	27,0	.38	9,7	5600	390	9100	630
2-2PHN	2-2MHN	1/8	1/8	7/16	1.06	27,0	.38	9,7	5600	390	9100	630
4-2PHN	4-2MHN	1/4	1/8	5/8	1.25	31,8	.56/.38	14,2/9,7	4100	280	7500	520
4-4PHN	4-4MHN	1/4	1/4	5/8	1.45	37,0	.56	14,2	4100	280	7500	520
6-2PHN	6-2MHN	3/8	1/8	3/4	1.27	32,3	.56/.38	14,2/9,7	4000	280	7200	500
6-4PHN	6-4MHN	3/8	1/4	3/4	1.45	37,0	.56	14,2	4000	280	7200	500
6-6PHN	6-6MHN	3/8	3/8	3/4	1.45	37,0	.56	14,2	4000	280	7200	500
8-2PHN	8-2MHN	1/2	1/8	7/8	1.51	38,4	.75/.38	19,1/9,7	3900	270	6600	460
8-4PHN	8-4MHN	1/2	1/4	7/8	1.70	43,2	.75/.56	19,1/14,2	3900	270	6600	460
8-6PHN	8-6MHN	1/2	3/8	7/8	1.70	43,2	.75/.56	19,1/14,2	3900	270	6600	460
8-8PHN	8-8MHN	1/2	1/2	7/8	1.89	48,0	.75	19,1	3900	270	6600	460
12-4PHN	12-4MHN	3/4	1/4	1.1/8	1.78	45,2	.75/.38	19,1/9,7	3800	260	6400	440
12-8PHN	12-8MHN	3/4	1/2	1.1/8	1.97	50,0	.75	19,1	3800	260	6400	440
12-12PHN	12-12MHN	3/4	3/4	1.1/8	1.97	50,0	.75	19,1	3800	260	6400	440
16-4PHN	16-4MHN	1	1/4	1.3/4	1.94	50,0	.94/.38	23,9/9,7	2700	190	4600	320
16-8PHN	16-8MHN	1	1/2	1.3/4	2.16	54,9	.94/.75	23,9/19,1	2700	190	4600	320
16-12PHN	16-12MHN	1	3/4	1.3/4	2.16	54,9	.94/.75	23,9/19,1	2700	190	4600	320
16-16PHN	16-16MHN	1	1	1.3/8	2.34	59,4	.94	23,9	2700	190	4600	320

TUBEFITTINGS

Male Close Nipple



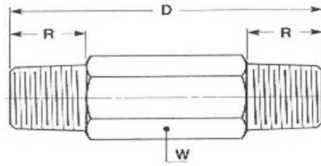
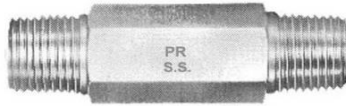
Part Number Pars Regulator	Part Number PARKER	NPT thread male	D		R		Working pressure			
			in.	mm	in.	mm	Brass		Stainless steel	
							PSI	Bar	PSI	Bar
2-2PRN	2-2MCN	1/8	0.75	19,1	0.33	9,7	5600	390	9100	630
4-4PRN	4-4MCN	1/4	1.13	28,6	0.48	14,2	4100	280	7500	520
6-6PRN	6-6MCN	3/8	1.13	28,6	0.48	14,2	4000	280	7200	500
8-8PRN	8-8MCN	1/2	1.5	38,1	0.66	14,2	3900	270	6600	460
12-12PRN	12-12MCN	3/4	1.5	38,1	0.66	19,1	6400	440	6400	440
16-16PRN	16-16MCN	1	1.88	47,6	0.83	23,9	2700	190	4600	320

E-MAIL : info@parsregulator.com
Parsregulator@yahoo.com

www.parsregulator.com

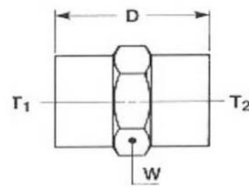
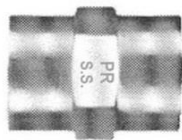
Tel : 88 30 77 66
Fax: 88 83 41 40

Male Hex Long Nipple



Part Number Pars Regulator	Part Number PARKER	NPT thread male	W HEX.	D		R		Working pressure			
								Brass		Stainless steel	
				in.	mm	in.	mm	PSI	Bar	PSI	Bar
2-2PHLN1,5	2-2MHLN1,5	1/8	7/16	1.5	35,1	.38	9,7	5600	390	9100	630
2-2PHLN2,0	2-2MHLN2,0	1/8	7/16	2.0	50,8	.38	9,7	5600	390	9100	630
2-2PHLN2,5	2-2MHLN2,5	1/8	7/16	2.5	64,0	.38	9,7	5600	390	9100	630
2-2PHLN3,0	2-2MHLN3,0	1/8	7/16	3.0	76,2	.38	9,7	5600	390	9100	630
4-4PHLN2,0	4-4MHLN2,0	1/4	5/8	2.0	50,6	.56	14,2	4100	280	7500	520
4-4PHLN2,5	4-4MHLN2,5	1/4	5/8	2.5	64,0	.56	14,2	4100	280	7500	520
4-4PHLN3,0	4-4MHLN3,0	1/4	5/8	3.0	76,2	.56	14,2	4100	280	7500	520
4-4PHLN4,0	4-4MHLN4,0	1/4	5/8	4.0	102,0	.56	14,2	4100	280	7500	520
8-8PHLN2,0	8-8MHLN2,0	1/2	7/8	2.0	50,8	.75	19,1	3900	270	6600	460
8-8PHLN3,0	8-8MHLN3,0	1/2	7/8	3.0	76,2	.75	19,1	3900	270	6600	460
12-12PHLN3,0	12-12MHLN3,0	3/4	1.1/16	3.0	76,2	.75	19,1	3800	260	6400	440
16-16PHLN3,0	16-16MHLN3,0	1	1.3/8	3.0	76,2	.94	23,9	2700	190	4600	320

Female Hex Coupling



Part Number Pars Regulator	Part Number PARKER	NPT thread female		W hex.	D		Working pressure			
		T1	T2				Brass		Stainless steel	
		in.	mm		PSI	Bar	PSI	Bar		
2-2FPCO	2-2FHC	1/8	1/8	5/8	0.75	19,1	4000	280	6400	440
4-2FPCO	4-2FHC	1/4	1/8	3/4	0.94	23,9	4300	300	6600	460
4-4FPCO	4-4FHC	1/4	1/4	3/4	1.13	28,7	4300	300	6600	460
6-2FPCO	6-2FHC	3/8	1/8	7/8	1.03	26,2	3500	240	5300	370
6-4FPCO	6-4FHC	3/8	1/4	7/8	1.13	28,7	3500	240	5300	370
6-6FPCO	6-6FHC	3/8	3/8	7/8	1.13	28,7	3500	240	5300	370
8-2FPCO	8-2FHC	1/2	1/8	1.1/8	1.56	39,7	3600	250	5200	360
8-4FPCO	8-4FHC	1/2	1/4	1.1/8	1.38	35,1	3600	250	5200	360
8-6FPCO	8-6FHC	1/2	3/8	1.1/8	1.50	38,1	3600	250	5200	360
8-8FPCO	8-8FHC	1/2	1/2	1.1/8	1.50	38,1	3600	250	5200	360
12-4FPCO	12-4FHC	3/4	1/4	1.3/8	1.75	44,5	3000	210	4300	300
12-8FPCO	12-8FHC	3/4	1/2	1.3/8	1.88	47,8	3000	210	4300	300
12-12FPCO	12-12FHC	3/4	3/4	1.3/8	1.53	38,9	3000	210	4300	300
16-4FPCO	16-4FHC	1	1/4	1.5/8	1.44	36,6	3100	210	4500	310
16-8FPCO	16-8FHC	1	1/2	1.5/8	1.66	42,2	3100	210	4500	310
16-12FPCO	16-12FHC	1	3/4	1.5/8	1.66	42,2	3100	210	4500	310
16-16FPCO	16-16FHC	1	1	1.5/8	1.89	48,0	3100	210	4500	310

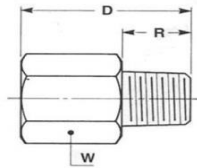
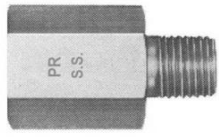
TUBEFITTINGS

E-MAIL : info@parsregulator.com
Parsregulator@yahoo.com

www.parsregulator.com

Tel : 88 30 77 66
Fax: 88 83 41 40

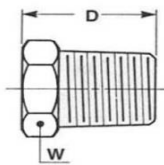
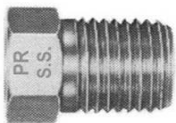
Female-Male Adapter



Part Number Pars Regulator	Part Number PARKER	NPT thread		W HEX.	D		R		Working pressure			
		Female	male		in.	mm	in.	mm	Brass		Stainless steel	
									PSI	Bar	PSI	Bar
2-1FMPA	2-1RA	1/8	1/16	5/8	1.03	26,2	.38	9,7	4000	300	6400	440
2-2FMPA	2-2RA	1/8	1/16	5/8	1.03	26,2	.38	9,7	4000	300	6400	440
4-2FMPA	4-2RA	1/4	1/8	3/4	1.22	31,0	.38	9,7	4300	300	6600	460
4-4FMPA	4-4RA	1/4	1/4	3/4	1.40	35,6	.38	9,7	4300	300	6600	460
6-2FMPA	6-2RA	3/8	1/8	7/8	1.44	36,6	.38	9,7	3500	240	5300	370
6-4FMPA	6-4RA	3/8	1/4	7/8	1.44	36,6	.56	14,2	3500	240	5300	370
6-6FMPA	6-6RA	3/8	3/8	7/8	1.44	36,6	.38	9,7	3500	240	5300	370
8-2FMPA	8-2RA	1/2	1/8	1.1/8	1.50	38,1	.38	9,7	3600	250	5200	360
8-4FMPA	8-4RA	1/2	1/4	1.1/8	1.69	43,0	.56	14,2	3600	250	5200	360
8-6FMPA	8-6RA	1/2	3/8	1.1/8	1.69	43,0	.56	14,2	3600	250	5200	360
8-8FMPA	8-8RA	1/2	1/2	1.1/8	1.88	47,8	.56	14,2	3600	250	5200	360
12-4FMPA	12-4RA	3/4	1/4	1.3/8	1.78	45,2	.56	14,2	3000	210	4300	300
12-6FMPA	12-6RA	3/4	3/8	1.3/8	1.78	45,2	.56	14,2	3000	310	4300	300
12-8FMPA	12-8RA	3/4	1/2	1.3/8	1.94	49,3	.75	19,1	3000	210	4300	300
12-12FMPA	12-12RA	3/4	3/4	1.5/16	2.00	50,8	.62	15,7	2300	160	4300	300
16-4FMPA	16-4RA	1	1/4	1.5/8	2.13	54,1	.38	9,7	3100	210	4500	310
16-8FMPA	16-8RA	1	1/2	1.5/8	2.16	54,9	.75	19,1	3100	210	4500	310
16-12FMPA	16-12RA	1	3/4	1.5/8	2.19	55,7	.75	19,1	3100	210	4500	310
16-16FMPA	16-16RA	1	1	1.5/8	2.28	57,9	.88	22,4	2200	150	4100	280

TUBEFITTINGS

Reducing Bushing



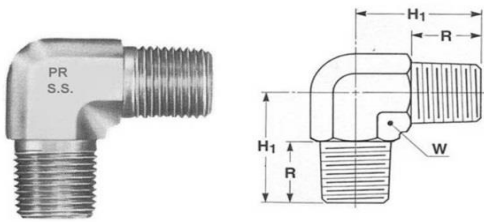
Part Number Pars Regulator	Part Number PARKER	NPT thread		W HEX.	D		Working pressure			
		male	Female		in.	mm	Brass		Stainless steel	
							PSI	Bar	PSI	Bar
2-1FMPB	2-1RB	1/8	1/16	7/16	.63	16,0	2900	200	6400	440
4-2FMPB	4-2RB	1/4	1/8	5/8	.84	21,3	3600	250	6000	410
6-2FMPB	6-2RB	3/8	1/8	3/4	.84	21,3	4900	340	8000	550
6-4FMPB	6-4RB	3/8	1/4	3/4	.84	21,3	3000	210	5300	370
8-2FMPB	8-2RB	1/2	1/8	7/8	1.09	27,7	6900	480	11500	790
8-4FMPB	8-4RB	1/2	1/4	7/8	1.09	27,7	4900	340	8000	550
8-6FMPB	8-6RB	1/2	3/8	7/8	1.09	27,7	2800	190	4600	320
12-4FMPB	12-4RB	3/4	1/4	1.1/8	1.17	29,7	6400	440	11100	770
12-6FMPB	12-6RB	3/4	3/8	1.1/8	1.17	29,7	4700	320	7700	530
12-8FMPB	12-8RB	3/4	1/2	1.1/8	1.17	29,7	2800	190	4900	340
16-4FMPB	16-4RB	1	1/4	1.3/8	1.36	35,5	7300	500	13000	900
16-6FMPB	16-6RB	1	3/8	1.3/8	1.36	35,5	6400	440	11100	770
16-8FMPB	16-8RB	1	1/2	1.3/8	1.36	35,5	4700	320	7500	520
16-12FMPB	16-12RB	1	3/4	1.3/8	1.36	35,5	2500	170	4200	290

E-MAIL : info@parsregulator.com
parsregulator@yahoo.com

www.parsregulator.com

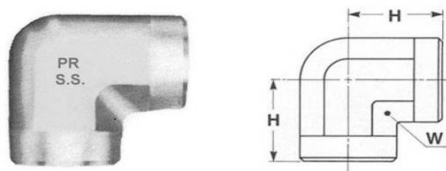
Tel : 88 30 77 66
Fax: 88 83 41 40

Male Elbow



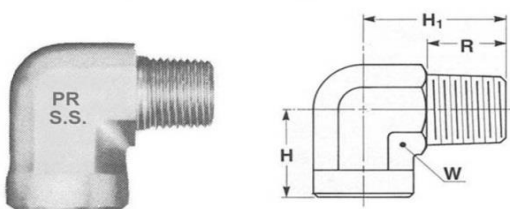
Part Number Pars Regulator	Part Number PARKER	NPT thread male	W HEX.	H1		R		Working pressure			
				in.	mm	in.	mm	Brass		Stainless steel	
								PSI	Bar	PSI	Bar
2-2MPE	2-2ME	1/8	7/16	0.75	19,8	.38	9,7	5000	340	9100	630
4-4MPE	4-4ME	1/4	9/16	1.09	27,7	.56	14,2	4100	280	7500	520
6-6MPE	6-6ME	3/8	3/4	1.22	31,0	.56	14,2	4000	280	7200	500
8-8MPE	8-8ME	1/2	7/8	1.47	37,3	.75	19,1	3100	210	5800	400
12-12MPE	12-12ME	3/4	1.1/16	1.59	40,4	.75	19,1	3400	230	6400	440

Female Elbow



Part Number Pars Regulator	Part Number PARKER	NPT thread Female	W HEX.	H		Working pressure			
				in.	mm	Brass		Stainless steel	
						PSI	Bar	PSI	Bar
2-2FPE	2-2FE	1/8	9/16	.66	16,8	2900	200	5500	380
4-4FPE	4-4FE	1/4	3/4	.88	22,4	3000	210	5600	390
6-6FPE	6-6FE	3/8	7/8	1.02	26,0	2700	190	5000	340
8-8FPE	8-8FE	1/2	1.1/16	1.23	31,2	2500	170	4500	310
12-12FPE	12-12FE	3/4	1.5/16	1.36	34,5	2000	140	3500	240
16-16FPE	16-16FE	1	1.5/8	1.63	41,4	2300	160	3900	270

Street Elbow



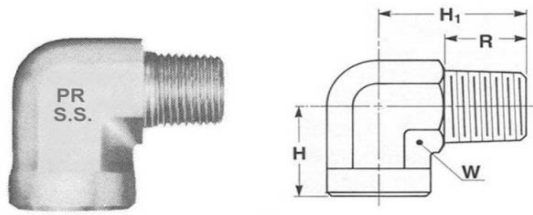
Part Number Pars Regulator	Part Number PARKER	NPT thread		W hex.	H		H1		R		Working pressure			
		Male	female		in.	mm	in.	mm	in.	mm	Brass		Stainless steel	
											PSI	Bar	PSI	Bar
1-1SPE	1-1SE	1/16	1/16	9/16	.5	12,7	.72	18,3	.38	9,7	3800	260	7000	480
2-2SPE	2-2SE	1/8	1/8	9/16	.66	16,8	.78	19,8	.38	9,7	2900	200	5500	380
4-4SPE	4-4SE	1/4	1/4	3/4	.88	22,4	1.09	27,7	.56	14,2	3000	210	5600	390
6-6SPE	6-6SE	3/8	3/8	7/8	1.02	26,0	1.22	31,0	.56	14,2	2700	190	5000	340
8-8SPE	8-8SE	1/2	1/2	1.1/16	1.23	31,2	1.47	37,3	.75	19,1	2500	170	4500	310
12-12SPE	12-12SE	3/4	3/4	1.5/16	1.36	34,5	1.59	40,4	.75	19,1	2000	140	3500	240
16-16SPE	16-16SE	1	1	1.5/8	1.63	41,4	1.97	50,0	.94	23,9	2300	160	3900	270

E-MAIL : info@parsregulator.com
parsregulator@yahoo.com

www.parsregulator.com

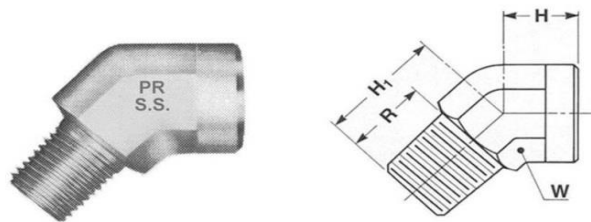
Tel : 88 30 77 66
Fax: 88 83 41 40

Reducing Street Elbow



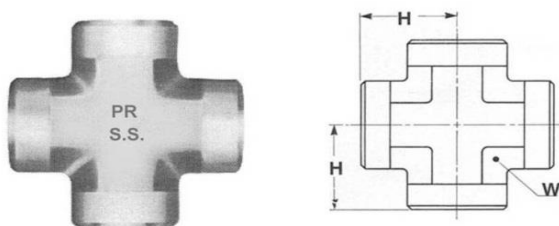
Part Number Pars Regulator	Part Number PARKER	NPT thread		W hex.	H		H1		R		Working pressure			
		Male	female		in.	mm	in.	mm	in.	mm	Brass		Stainless steel	
											PSI	Bar	PSI	Bar
2-1SPRE	2-1SE	1/8	1/16	9/16	.61	16,8	.78	19,8	.38	9,7	2900	200	5500	380
4-2SPRE	4-2SE	1/4	1/8	9/16	.88	22,4	.91	23,1	.38	9,7	3000	210	5600	390
6-4SPRE	6-4SE	3/8	1/4	3/4	1.02	26,0	1.22	31,0	.56	14,2	2700	190	5000	340
8-4SPRE	8-4SE	1/2	1/4	7/8	1.23	31,2	1.25	31,8	.38	9,7	2500	170	4500	310
8-6SPRE	8-6SE	1/2	3/8	7/8	1.23	31,2	1.25	31,8	.56	14,2	2500	170	4500	310
12-8SPRE	12-8SE	3/4	1/2	1.5/16	1.36	34,5	1.59	40,4	.75	19,1	2000	140	3500	240
16-8SPRE	16-8SE	1	1/2	1.5/16	1.63	41,4	1.72	43,7	.75	19,1	2300	160	3900	270
16-12SPRE	16-12SE	1	3/4	1.5/16	1.63	41,4	1.72	43,7	.75	19,1	2300	160	3900	270

Street Elbow 45°



Part Number Pars Regulator	Part Number PARKER	NPT thread	W hex.	H		H1		R		Working pressure			
				in.	mm	in.	mm	in.	mm	Brass		Stainless steel	
										PSI	Bar	PSI	Bar
2-2SPYE	2-2SVE	1/8	9/16	.50	12,7	.72	18,3	.38	9,7	2900	200	5500	380
4-4SPYE	4-4SVE	1/4	3/4	.69	17,5	1.05	26,7	.38	9,7	3000	210	5600	390
6-6SPYE	6-6SVE	3/8	7/8	.75	19,1	1.06	27,0	.56	14,2	2700	190	5000	340
8-8SPYE	8-8SVE	1/2	1.1/16	.94	23,9	1.34	34,0	.75	19,1	2500	170	4500	310
12-12SPYE	12-12SVE	3/4	1.5/16	1.00	25,4	1.38	35,1	.75	19,1	2000	140	3500	240

Female Cross



Part Number Pars Regulator	Part Number PARKER	NPT thread Female	W HEX.	H		Working pressure			
				in.	mm	Brass		Stainless steel	
						PSI	Bar	PSI	Bar
2FPC	2FX	1/8	9/16	.66	16,8	2900	200	5500	380
4FPC	4FX	1/4	3/4	.88	22,4	3000	210	5600	390
6FPC	6FX	3/8	7/8	1.02	26,0	2700	190	5000	340
8FPC	8FX	1/2	1.1/16	1.23	31,2	2500	170	4500	310
12FPC	12FX	3/4	1.5/16	1.36	34,5	2000	140	3500	240
16FPC	16FX	1	1.5/8	1.63	41,4	2300	160	3900	270

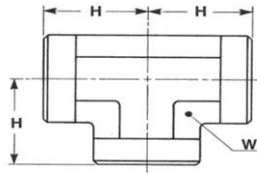
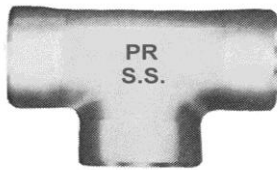
TUBEFITTINGS

E-MAIL : info@parsregulator.com
Parsregulator@yahoo.com

www.parsregulator.com

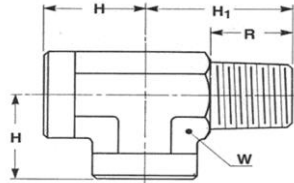
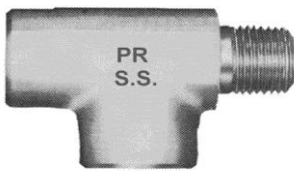
Tel : 88 30 77 66
Fax: 88 83 41 40

Female Tee



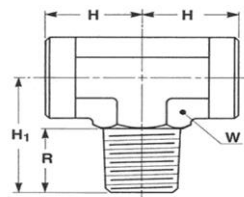
Part Number Pars Regulator	Part Number PARKER	NPT thread Female	W HEX.	D		Working pressure			
						Brass		Stainless steel	
				in.	mm	PSI	Bar	PSI	Bar
2-2-2FPT	2-2-2FT	1/8	9/16	.66	16,8	2900	200	5500	380
4-4-4FPT	4-4-4FT	1/4	3/4	.88	22,4	3000	210	5600	390
6-6-6FPT	6-6-6FT	3/8	7/8	1.02	26,0	2700	190	5000	340
8-8-8FPT	8-8-8FT	1/2	1.1/16	1.23	31,2	2500	170	4500	310
12-12-12FPT	12-12-12FT	3/4	1.5/16	1.36	34,5	2000	140	3500	240
16-16-16FPT	16-16-16FT	1	1.5/8	1.63	41,4	2300	160	3900	270

Street Tee



Part Number Pars Regulator	Part Number PARKER	NPT thread	W hex.	H		H1		R		Working pressure			
										Brass		Stainless steel	
				in.	mm	in.	mm	in.	mm	PSI	Bar	PSI	Bar
2-2-2SPT	2-2-2ST	1/8	9/16	.66	16,8	.78	19,8	.38	9,7	2900	200	5500	380
4-4-4SPT	4-4-4ST	1/4	3/4	.88	22,4	1.09	27,7	.38	9,7	3000	210	5600	390
6-6-6SPT	6-6-6ST	3/8	7/8	1.02	26,0	1.22	31,0	.56	14,2	2700	190	5000	340
8-8-8SPT	8-8-8ST	1/2	1.1/16	1.23	31,2	1.47	37,3	.75	19,1	2500	170	4500	310
12-12-12SPT	12-12-12ST	3/4	1.5/16	1.36	34,5	1.59	40,4	.75	19,1	2000	140	3500	240
16-16-16SPT	16-16-16ST	1	1.5/8	1.63	41,4	1.97	50,0	.94	23,9	2300	160	3900	270

Male Branch Tee



Part Number Pars Regulator	Part Number PARKER	NPT thread	W hex.	H		H1		R		Working pressure			
										Brass		Stainless steel	
				in.	mm	in.	mm	in.	mm	PSI	Bar	PSI	Bar
2-2-2MPBT	2-2-2MBT	1/8	9/16	.66	16,8	.78	19,8	.38	9,7	2900	200	5500	380
4-4-4MPBT	4-4-4MBT	1/4	3/4	.88	22,4	1.09	27,7	.38	9,7	3000	210	5600	390
6-6-6MPBT	6-6-6MBT	3/8	7/8	1.02	26,0	1.22	31,0	.56	14,2	2700	190	5000	340
8-8-8MPBT	8-8-8MBT	1/2	1.1/16	1.23	31,2	1.47	37,3	.75	19,1	2500	170	4500	310
12-12-12MPBT	12-12-12MBT	3/4	1.5/16	1.36	34,5	1.59	40,4	.75	19,1	2000	140	3500	240
16-16-16MPBT	16-16-16MBT	1	1.5/8	1.91	48,5	1.94	49,3	.88	22,4	2300	220	6000	410

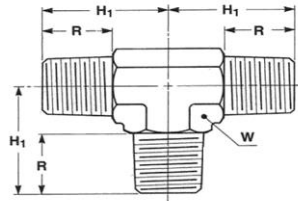
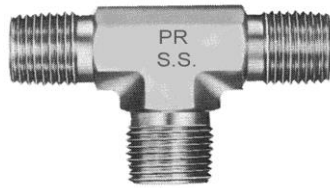
info@parsregulator.com
E-MAIL : parsregulator@yahoo.com

www.parsregulator.com

Tel : 88 30 77 66
Fax: 88 83 41 40

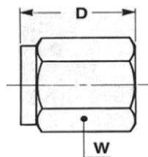
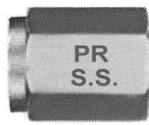
T
U
B
E
F
I
T
T
I
N
G
S

Male Tee



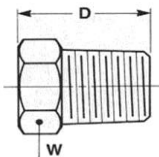
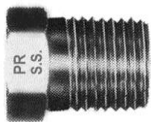
Part Number Pars Regulator	Part Number PARKER	NPT thread male	W HEX.	H1		R		Working pressure			
				in.	mm	in.	mm	Brass		Stainless steel	
								PSI	Bar	PSI	Bar
2-2-2MPT	2-2-2MT	1/8	7/16	.75	19,8	.38	9,7	5000	340	9100	630
4-4-4MPT	4-4-4MT	1/4	9/16	1.09	27,7	.38	9,7	4100	280	7500	520
6-6-6MPT	6-6-6MT	3/8	3/4	1.22	31,0	.56	14,2	4000	280	7200	500
8-8-8MPT	8-8-8MT	1/2	7/8	1.47	37,3	.75	19,1	3100	210	5800	400
12-12-12MPT	12-12-12MT	3/4	1.1/16	1.59	40,4	.87	22,1	3400	230	6400	440
16-16-16MPT	16-16-16MT	1	1.5/16	1.97	50,0	1.06	27,0	2700	190	4600	320

Pipe Cap



Part Number Pars Regulator	Part Number PARKER	NPT thread Female	W HEX.	D		Working pressure			
				in.	mm	Brass		Stainless steel	
						PSI	Bar	PSI	Bar
2PC	2CP	1/8	9/16	.75	19,1	4000	280	6400	440
4PC	4CP	1/4	3/4	.91	23,1	4300	300	6600	460
6PC	6CP	3/8	7/8	1.03	26,2	3500	240	5300	370
8PC	8CP	1/2	1.1/16	1.34	34,0	3600	250	5200	360
12PC	12CP	3/4	1.5/16	1.44	36,6	2300	160	4300	300
16PC	16CP	1	1.5/8	1.62	41,1	2200	150	4100	280

Hex Head Plug



Part Number Pars Regulator	Part Number PARKER	NPT thread Female	W HEX.	D	
				in.	mm
2PPH	2PH	1/8	7/16	.56	14,2
4PPH	4PH	1/4	9/16	.75	19,1
6PPH	6PH	3/8	11/16	.78	19,8
8PPH	8PH	1/2	7/8	.97	24,6
12PPH	12PH	3/4	1.1/16	1.15	29,2
16PPH	16PH	1	1.5/16	1.34	34,0

TUBEFITTINGS

E-MAIL : info@parsregulator.com
parsregulator@yahoo.com

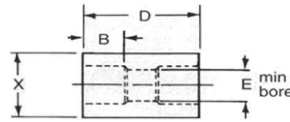
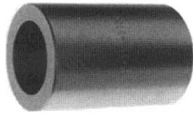
www.parsregulator.com

Tel : 88 30 77 66
Fax: 88 83 41 40

TUBE & WELD FITTINGS

Union

tube socket end - both ports

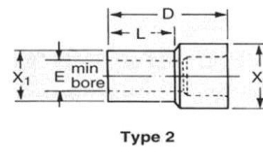
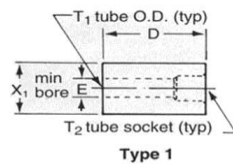


Part Number Pars Regulator	Part Number PARKER	Tube O.D	E min bore	B	D	X dia
2PSU	2HW	1/8	.094	.156	.56	.375
3PSU	3HW	3/16	.141	.203	.66	.438
4PSU	4HW	1/4	.188	.250	.75	.500
5PSU	5HW	5/16	.250	.313	.88	.562
6PSU	6HW	3/8	.313	.344	.97	.625
8PSU	8HW	1/2	.438	.406	1.06	.813
10PSU	10HW	5/8	.500	.469	1.25	.938
12PSU	12HW	3/4	.657	.500	1.31	1.125
16PSU	16HW	1	.906	.563	1.56	1.375
20PSU	20HW	1.1/4	1.063	.625	1.69	1.750
24PSU	24HW	1.1/2	1.313	.670	1.75	2.000

TUBE FITTINGS

Tube Reducer

tube socket reducer



Part Number Pars Regulator	Part Number PARKER	T1 size	T2 tube socket	Type	D	X1 dia	X2 dia	L	E min bore
6-4PRSU	6-4TRW	3/8	1/4	2	.83	.375	.53	.47	.188
8-4PRSU	8-4TRW	1/2	1/4	1	.88	.500	-	-	.188
8-6PRSU	8-6TRW	1/2	3/8	2	1.00	.500	.63	.56	.313
10-4PRSU	10-4TRW	5/8	1/4	3	1.09	.625	.50	.31	.188
10-6PRSU	10-6TRW	5/8	3/8	1	1.03	.625	-	-	.313
10-8PRSU	10-8TRW	5/8	1/2	2	1.17	.625	.81	.63	.438
12-4PRSU	12-4TRW	3/4	1/4	3	1.19	.750	.50	.31	.188
12-6PRSU	12-6TRW	3/4	3/8	3	1.25	.750	.63	.41	.313
12-8PRSU	12-8TRW	3/4	1/2	2	1.19	.750	.81	.69	.438
12-10PRSU	12-10TRW	3/4	5/8	2	1.33	.750	.94	.69	.500
16-4PRSU	16-4TRW	1	1/4	3	1.31	1.000	.50	.31	.188
16-6PRSU	16-6TRW	1	3/8	3	1.38	1.000	.63	.41	.313
16-8PRSU	16-8TRW	1	1/2	3	1.41	1.000	.81	.50	.438
16-10PRSU	16-10TRW	1	5/8	3	1.42	1.000	.94	.56	.500
16-12PRSU	16-12TRW	1	3/4	2	1.39	1.000	1.13	.75	.656
20-4PRSU	20-4TRW	1.1/4	1/4	3	1.45	1.250	.50	.31	.188
20-6PRSU	20-6TRW	1.1/4	3/8	3	1.56	1.250	.63	.42	.313
20-8PRSU	20-8TRW	1.1/4	1/2	3	1.63	1.250	.81	.50	.438
20-12PRSU	20-12TRW	1.1/4	3/4	3	1.63	1.250	1.13	.56	.656
20-16PRSU	20-16TRW	1.1/4	1	2	1.59	1.250	1.38	.88	.906
24-12PRSU	24-12TRW	1.1/2	3/4	3	1.75	1.500	1.13	.56	.656
24-16PRSU	24-16TRW	1.1/2	1	3	1.75	1.500	1.38	.63	.906
24-20PRSU	24-20TRW	1.1/2	1.1/4	2	1.66	1.500	1.75	.81	1.062

E-MAIL : info@parsregulator.com
parsregulator@yahoo.com

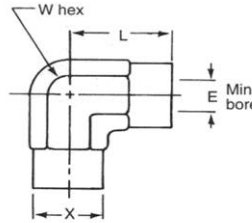
www.parsregulator.com

Tel : 88 30 77 66
Fax: 88 83 41 40

TUBE & WELD FITTINGS

Elbow

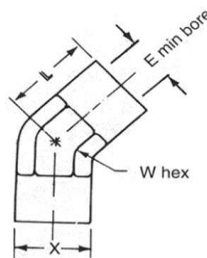
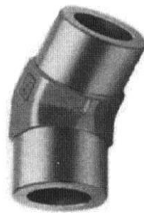
tube socket end - both parts



Part Number Pars Regulator	Part Number PARKER	Tube O.D	E min bore	L	X dia	W dia	Working pressure	
							PSI	Bar
2PSEL	2EW	1/8	.094	.63	.375	7/16	10,200	700
3PSEL	3EW	3/16	.141	.66	.438	7/16	9,600	660
4PSEL	4EW	1/4	.188	.69	.500	9/16	9,600	660
5PSEL	5EW	5/16	.250	.75	.580	9/16	9,900	680
6PSEL	6EW	3/8	.313	.81	.625	3/4	8,100	550
8PSEL	8EW	1/2	.438	1.00	.775	3/4	7,300	500
10PSEL	10EW	5/8	.500	1.16	.938	1.1/16	6,600	450
12PSEL	12EW	3/4	.657	1.31	1.087	1.1/16	6,000	410
16PSEL	16EW	1	.906	1.47	1.437	1.5/16	4,400	300
20PSEL	20EW	1.1/4	1.063	1.88	1.750	1.7/8	4,600	310
24PSEL	24EW	1.1/2	1.313	2.25	2.000	2.1/2	3,700	250

45° Elbow

tube socket end - both parts

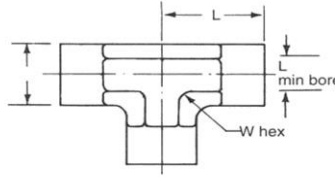


Part Number Pars Regulator	Part Number PARKER	Tube O.D	E min bore	L	X dia	W dia	Working pressure	
							PSI	Bar
2PSyEL	2NW	1/8	.094	.47	.375	7/16	10,200	700
3PSyEL	3NW	3/16	.141	.53	.438	9/16	9,600	660
4PSyEL	4NW	1/4	.188	.59	.500	9/16	9,600	660
5PSyEL	5NW	5/16	.250	.59	.578	9/16	9,900	680
6PSyEL	6NW	3/8	.313	.75	.625	7/8	8,100	550
8PSyEL	8NW	1/2	.438	.84	.844	7/8	7,300	500
10PSyEL	10NW	5/8	.500	1.06	.938	1.1/16	6,600	450
12PSyEL	12NW	3/4	.656	1.13	1.087	1.1/16	6,000	410
16PSyEL	16NW	1	.906	1.25	1.375	1.5/16	4,400	300

TUBE & WELD FITTINGS

Tee

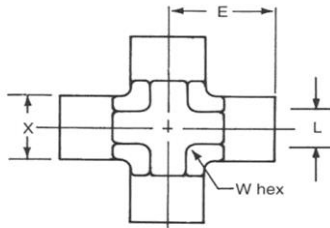
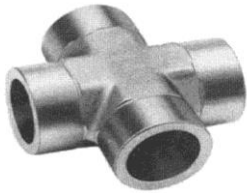
tube socket end - all 3 parts



Part Number Pars Regulator	Part Number PARKER	Tube O.D	E min bore	L	X dia	W dia	Working pressure	
							PSI	Bar
2PSET	2JW	1/8	.094	.63	.375	7/16	10,200	700
3PSET	3JW	3/16	.141	.66	.438	7/16	9,600	660
4PSET	4JW	1/4	.188	.69	.500	9/16	9,600	660
5PSET	5JW	5/16	.250	.75	.578	9/16	9,900	680
6PSET	6JW	3/8	.313	.81	.625	3/4	8,100	550
8PSET	8JW	1/2	.438	1.00	.775	3/4	7,300	500
10PSET	10JW	5/8	.500	1.16	.938	1.1/16	6,600	450
12PSET	12JW	3/4	.657	1.31	1.087	1.1/16	6,000	410
16PSET	16JW	1	.906	1.47	1.437	1.5/16	4,400	300
20PSET	20JW	1.1/4	1.063	1.88	1.750	1.7/8	4,600	310
24PSET	24JW	1.1/2	1.313	2.25	2.000	2.1/2	3,700	250

Cross

tube socket end- all 4 parts

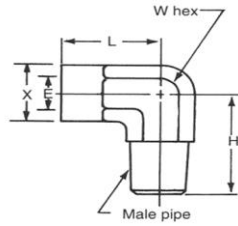


Part Number Pars Regulator	Part Number PARKER	Tube O.D	E min bore	L	X dia	W dia	Working pressure	
							PSI	Bar
2PSC	2KW	1/8	.094	.63	.375	7/16	10,200	700
3PSC	3KW	3/16	.141	.66	.438	7/16	9,600	660
4PSC	4KW	1/4	.188	.69	.500	9/16	9,600	660
5PSC	5KW	5/16	.250	.75	.563	9/16	9,900	680
6PSC	6KW	3/8	.313	.81	.625	3/4	8,100	550
8PSC	8KW	1/2	.438	1.03	0.813	7/8	7,300	500
10PSC	10KW	5/8	.500	1.16	.938	1.1/16	6,600	450
12PSC	12KW	3/4	.657	1.31	1.087	1.1/16	6,000	410
16PSC	16KW	1	.906	1.47	1.375	1.5/16	4,400	300

TUBE & WELD FITTINGS

Male Elbow

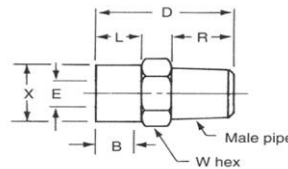
tube socket end - male pipe end



Part Number Pars Regulator	Part Number PARKER	Tube O.D	male pipe	E min bore	L	H	W dia	X hex	Working pressure	
									PSI	Bar
2MPSEL	2CW	1/8	1/8	.094	.63	.72	.375	7/16	9,100	620
3MPSEL	3CW	3/16	1/8	.140	.66	.72	.438	7/16	9,100	620
4MPSEL	4CW	1/4	1/8	.188	.69	.78	.500	9/16	9,100	620
4-4MPSEL	4-4CW	1/4	1/4	.188	.66	.94	.500	9/16	7,500	510
5 CMPSEL	5 CW	5/16	1/8	.188	.75	.78	.578	1/2	9,100	620
6 CMPSEL	6 CW	3/8	1/4	.281	.91	1.13	.625	3/4	7,500	510
6-6MPSEL	6-6CW	3/8	3/8	.321	.91	1.13	.625	3/4	7,200	490
6-8MPSEL	6-8CW	3/8	1/2	.321	.97	1.47	.625	7/8	5,800	400
8MPSEL	8CW	1/2	3/8	.406	1.00	1.13	.813	3/4	7,200	490
8-8MPSEL	8-8CW	1/2	1/2	.437	1.06	1.47	.813	7/8	5,800	400
10MPSEL	10CW	5/8	1/2	.500	1.16	1.50	.938	1.1/16	5,800	400
12MPSEL	12CW	3/4	3/4	.656	1.31	1.59	1.087	1.1/16	6,000	410
16MPSEL	16CW	1	1	.906	1.47	1.97	1.375	1.5/16	4,400	300

Male Connector

tube socket - male pipe end



Part Number Pars Regulator	Part Number PARKER	Tube O.D	male pipe	W hex	E min bore	X Dia	L	D	B	R	Working pressure	
											PSI	Bar
2MPSC	2FW	1/8	1/8	7/16	.094	.375	.23	.81	.156	.38	9,100	620
3MPSC	3FW	3/16	1/8	7/16	.140	.417	.30	.88	.203	.38	9,100	620
4MPSC	4FW	1/4	1/8	1/2	.188	.480	.30	.88	.250	.38	9,100	620
4-4MPSC	4-4FW	1/4	1/4	5/8	.188	.500	.30	1.12	.250	.56	7,500	510
5MPSC	5FW	5/16	1/8	9/16	.188	.542	.33	.94	.313	.38	9,100	620
6MPSC	6FW	3/8	1/4	5/8	.281	.605	.41	1.25	.344	.56	7,500	510
6-6MPSC	6-6FW	3/8	3/8	3/4	.312	.625	.42	1.31	.344	.56	7,200	490
6-8MPSC	6-8FW	3/8	1/2	7/8	.312	.625	.42	1.50	.344	.75	6,600	450
8MPSC	8FW	1/2	3/8	13/16	.406	.792	.55	1.44	.406	.56	7,200	490
8-8MPSC	8-8FW	1/2	1/2	7/8	.437	.813	.55	1.66	.406	.75	6,600	450
10MPSC	10FW	5/8	1/2	15/16	.500	.917	.53	1.63	.469	.75	6,600	450
12MPSC	12FW	3/4	3/4	1.1/8	.656	1.105	.58	1.69	.500	.75	6,000	410
16MPSC	16FW	1	1	1.3/8	.906	1.355	.67	2.00	.563	.94	4,400	300
20MPSC	20FW	1.1/4	1.1/4	1.3/4	1.063	-	.81	2.22	.625	.97	3,500	240
24MPSC	24FW	1.1/2	1.1/2	2	1.313	1.980	.88	2.38	.670	1.00	2,900	200

TUBE FITTINGS

E-MAIL : info@parsregulator.com
parsregulator@yahoo.com

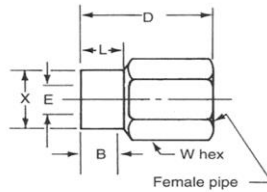
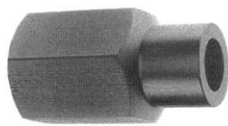
www.parsregulator.com

Tel : 88 30 77 66
Fax: 88 83 41 40

TUBE & WELD FITTINGS

Female Connector

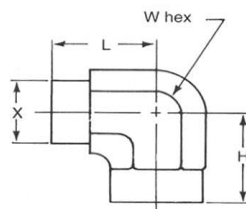
tube socket end - female pipe end



Part Number Pars Regulator	Part Number PARKER	Tube O.D	Female pipe	W hex	E min bore	X dia	L	D	B	Working pressure	
										PSI	Bar
2FMPS	2GW	1/8	1/8	9/16	.094	.375	.23	.88	.156	6,400	440
3FMPS	3GW	3/16	1/8	9/16	.141	.438	.28	.94	.203	6,400	440
4FMPS	4GW	1/4	1/8	9/16	.188	.500	.31	.97	.250	6,400	440
4-4FMPS	4-4GW	1/4	1/4	3/4	.188	.500	.31	1.13	.250	6,600	450
5FMPS	5 GW	5/16	1/8	9/16	.250	.542	0.38	1.03	.313	6,400	440
6FMPS	6 GW	3/8	1/4	3/4	.313	.625	.41	1.22	.344	6,600	450
6-6FMPS	6-6GW	3/8	3/8	15/16	.313	.625	.41	1.31	.344	5,300	360
8FMPS	8GW	1/2	3/8	15/16	.438	.813	.50	1.41	.406	5,300	360
8-8FMPS	8-8GW	1/2	1/2	1.1/8	.438	.813	.50	1.63	.406	5,200	350
10FMPS	10GW	5/8	1/2	1.1/8	.500	.938	.53	1.63	.469	5,200	350
12FMPS	12GW	3/4	3/4	1.3/8	.656	1.125	.66	1.78	.500	4,300	290

Female Elbow

tube socket end - female pipe end

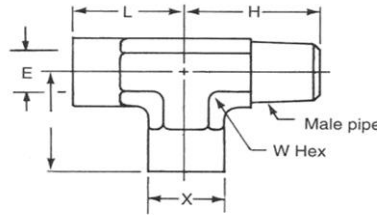


Part Number Pars Regulator	Part Number PARKER	Tube O.D	Female pipe	E min bore	L	H	X dia	W hex	Working pressure	
									PSI	Bar
2FMPESEL	2DW	1/8	1/8	.094	.63	.66	.375	9/16	5,500	380
3FMPESEL	3DW	3/16	1/8	.141	.66	.66	.438	9/16	5,500	380
4FMPESEL	4DW	1/4	1/8	.188	.69	.66	.500	9/16	5,500	380
4-4FMPESEL	4-4DW	1/4	1/4	.188	.81	.88	.500	3/4	5,600	380
5FMPESEL	5DW	5/16	1/8	.250	.75	.66	.562	9/16	5,500	380
6FMPESEL	6DW	3/8	1/4	.313	.91	.88	.625	3/4	5,600	380
6-6FMPESEL	6-6DW	3/8	3/8	.313	.94	.97	.625	7/8	5,000	340
8FMPESEL	8DW	1/2	3/8	.438	1.03	.97	.813	7/8	5,000	340
8-8FMPESEL	8-8DW	1/2	1/2	.438	1.13	1.23	.813	1.1/16	4,500	310
10FMPESEL	10DW	5/8	1/2	.500	1.16	1.23	.938	1.1/16	4,500	310
12FMPESEL	12DW	3/4	3/4	.656	1.44	1.36	1.125	1.5/16	3,500	240
16FMPESEL	16DW	1	1	.906	1.63	1.63	1.375	1.5/8	3,900	270

TUBE & WELD FITTINGS

Male Run Tee

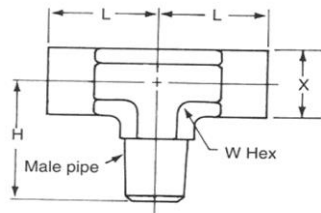
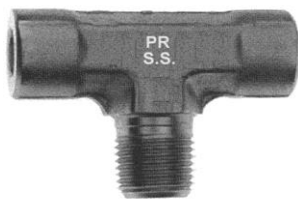
socket weld- male run tee



Part Number Pars Regulator	Part Number PARKER	Tube O.D	male pipe	E min bore	L	H	X dia	W hex	Working pressure	
									PSI	Bar
2MPSRT	2RW	1/8	1/8	.094	.66	.72	.375	7/16	9,100	620
3MPSRT	3RW	3/16	1/8	.140	.66	.72	.438	7/16	9,100	620
4MPSRT	4RW	1/4	1/8	.188	.69	.78	.500	9/16	9,100	620
5MPSRT	5RW	5/16	1/8	.188	.75	.78	.578	9/16	9,100	620
6MPSRT	6RW	3/8	1/4	.281	.91	1.09	0.625	3/4	7,500	510
8MPSRT	8RW	1/2	3/8	.406	1.03	1.22	.775	3/4	7,200	490
10MPSRT	10RW	5/8	1/2	.500	1.16	1.47	.938	1.1/16	5,800	400
12MPSRT	12RW	3/4	3/4	.656	1.31	1.59	1.087	1.1/16	6,000	410
14MPSRT	14RW	7/8	3/4	.719	1.40	1.72	1.312	1.5/16	5,700	390
16MPSRT	16RW	1	1	.906	1.47	1.97	1.375	1.5/16	4,400	300
20MPSRT	20RW	1.1/4	1.1/4	1.063	1.88	2.22	1.750	1.7/8	3,500	240
24MPSRT	24RW	1.1/2	1.1/2	1.313	2.25	2.63	2.000	2.1/2	2,000	200
32MPSRT	32RW	2	2	1.813	2.63	3.00	2.625	2.13/16	2,000	130

Male Branch Tee

socket weld-male outlet tee



Part Number Pars Regulator	Part Number PARKER	Tube O.D	male pipe	E min bore	L	H	Y	X dia	W hex	Working pressure	
										PSI	Bar
2MPSRT	2SW	1/8	1/8	.094	.66	.72	.438	.375	7/16	9,100	620
3MPSRT	3SW	3/16	1/8	.140	.66	.72	.438	.438	7/16	9,100	620
4MPSRT	4SW	1/4	1/8	.188	.69	.78	.563	.500	9/16	9,100	620
5MPSRT	5SW	5/16	1/8	.188	.75	.78	.563	.578	9/16	9,100	620
6MPSRT	6SW	3/8	1/4	.281	.91	1.09	.750	0.625	3/4	7,500	510
8MPSRT	8SW	1/2	3/8	.406	1.03	1.22	.750	.775	3/4	7,200	490
10MPSRT	10SW	5/8	1/2	.500	1.16	1.47	1.063	.938	1.1/16	5,800	400
12MPSRT	12SW	3/4	3/4	.656	1.31	1.59	1.063	1.087	1.1/16	6,000	410
14MPSRT	14SW	7/8	3/4	.719	1.40	1.72	1.313	1.312	1.5/16	5,700	390
16MPSRT	16SW	1	1	.906	1.47	1.97	1.313	1.375	1.5/16	4,400	300
20MPSRT	20SW	1.1/4	1.1/4	1.063	1.88	2.22	1.875	1.750	1.7/8	3,500	240
24MPSRT	24SW	1.1/2	1.1/2	1.313	2.25	2.46	2.500	2.000	2.1/2	2,900	200
32MPSRT	32SW	2	2	1.813	2.63	3.00	2.813	2.625	2.13/16	2,000	130

TUBE FITTINGS

E-MAIL : info@parsregulator.com
Parsregulator@yahoo.com

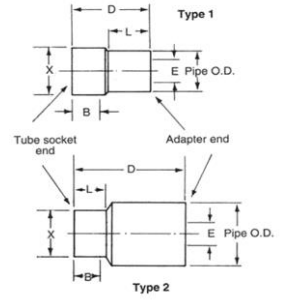
www.parsregulator.com

Tel : 88 30 77 66
Fax: 88 83 41 40

TUBE & WELD FITTINGS

Adaptor

tube socket end - adaptor end for welding into a female iron pipe size welding boss.

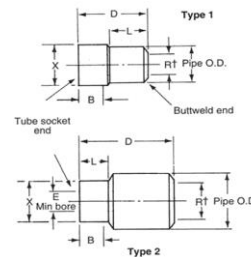


TUBE FITTINGS

Part Number Pars Regulator	Part Number PARKER	Type	Tube O.D	N.B pipe size	Pipe O.D	X dia	L	D	B	E min bore	Working pressure	
											PSI	Bar
4-1/8PA	4-1/8AW	1	1/4	1/8	.415	.500	.53	.88	.250	.188	9600	660
4-1/4PA	4-1/4AW	2	1/4	1/4	.545	.500	.31	.97	.250	.188	9600	660
4-3/8PA	4-3/8AW	2	1/4	3/8	.685	.531	.31	1.06	.250	.188	9600	660
4-1/2PA	4-1/2AW	2	1/4	1/2	.850	.531	.31	1.28	.250	.188	7800	530
4-3/4PA	4-3/4AW	2	1/4	3/4	1.06	.531	.31	1.39	.250	.188	6600	450
4-1PA	4-1AW	2	1/4	1	1.32	.531	.33	1.45	.250	.188	6000	410
5-1/8PA	5-1/8AW	1	5/16	1/8	.415	.562	.53	.97	.313	.250	9600	660
6-1/4PA	6-1/4AW	1	3/8	1/4	.545	.625	.53	.97	.344	.313	8100	550
6-3/8PA	6-3/8AW	2	3/8	3/8	.685	.625	.41	1.13	.344	.313	8100	550
6-1/2PA	6-1/2AW	2	3/8	1/2	.850	.656	.41	1.33	.344	.313	7800	530
6-3/4PA	6-3/4AW	2	3/8	3/4	1.06	.656	.41	1.44	.344	.313	6600	450
6-1PA	6-1AW	2	3/8	1	1.32	.656	.41	1.55	.344	.313	6000	410
8-3/8PA	8-3/8AW	1	1/2	3/8	.685	.813	.59	1.13	.406	.438	6600	450
8-1/2PA	8-1/2AW	2	1/2	1/2	.850	.813	.50	1.36	.406	.438	6600	450
8-3/4PA	8-3/4AW	2	1/2	3/4	1.06	.813	.50	1.47	.406	.438	6600	450
8-1PA	8-1AW	2	1/2	1	1.32	.813	.50	1.64	.406	.438	6000	410
10-1/2PA	10-1/2AW	1	5/8	1/2	.850	.938	.72	1.31	.469	.500	4900	330
12-1/2PA	12-1/2AW	1	3/4	1/2	.850	1.125	.72	1.50	.500	.531	4900	330
12-3/4PA	12-3/4AW	1	3/4	3/4	1.06	1.125	.78	1.41	.500	.656	4900	330
12-1PA	12-1AW	2	3/4	1	1.32	1.125	.61	1.66	.500	.656	4600	310
16-1PA	16-1AW	1	1	1	1.32	1.375	.88	1.56	.563	.906	3700	250
16-1-1/4PA	16-1-1/4AW	2	1	1.1/4	1.67	1.375	.67	1.83	.563	.906	3700	250
20-1-1/4PA	20-1-1/4AW	1	1.1/4	1.1/4	1.67	1.750	.94	1.75	.625	1.063	3700	250
20-1-1/2PA	20-1-1/2AW	2	1.1/4	1.1/2	1.91	1.750	.78	1.84	.625	1.063	4600	310
24-1-1/2PA	24-1-1/2AW	1	1.1/2	1.1/2	1.91	2.000	1.00	1.84	.670	1.313	3500	240
32-2PA	32-2AW	1	2	2	2.38	2.625	1.16	2.19	.781	1.813	2000	130

Adaptor

tube socket - butt weld other end for iron pipe size.



Part Number Pars Regulator	Part Number PARKER	Type	Tube O.D	N.B pipe size	Pipe O.D	X dia	L	D	B	R+	E min bore	Working pressure	
												PSI	Bar
4-1/8PA2	4-1/8AW2	1	1/4	1/8	.415	.500	.53	.88	.250		.188	9600	660
4-1/4PA2	4-1/4AW2	2	1/4	1/4	.545	.500	.31	.97	.250		.188	9600	660
4-3/8PA2	4-3/8AW2	2	1/4	3/8	.685	.500	.31	1.06	.250		.188	9600	660
4-1/2PA2	4-1/2AW2	2	1/4	1/2	.850	.500	.31	1.28	.250		.188	7800	530
4-3/4PA2	4-3/4AW2	2	1/4	3/4	1.06	.500	.31	1.39	.250		.188	6600	450
4-1PA2	4-1AW2	2	1/4	1	1.32	.500	.33	1.45	.250		.188	6000	410
5-1/8PA2	5-1/8AW2	1	5/16	1/8	.415	.563	.53	.97	.250		.188	9600	660
6-1/4PA2	6-1/4AW2	1	3/8	1/4	.545	.625	.53	.97	.344		.297	8100	550
6-1/4PA2	6-3/8AW2	2	3/8	3/8	.685	.625	.41	1.13	.344		.313	8100	550
6-1/4PA2	6-1/2AW2	2	3/8	1/2	.850	.625	.41	1.33	.344		.313	7800	530
6-3/4PA2	6-3/4AW2	2	3/8	3/4	1.06	.625	.41	1.44	.344		.313	6600	450
6-1PA2	6-1AW2	2	3/8	1	1.32	.625	.41	1.55	.344		.313	6000	410
8-3/8PA2	8-3/8AW2	1	1/2	3/8	.685	.813	.59	1.13	.406		.438	6600	450
8-1/2PA2	8-1/2AW2	2	1/2	1/2	.850	.813	.50	1.36	.406		.438	6600	450
8-3/4PA2	8-3/4AW2	2	1/2	3/4	1.06	.813	.50	1.47	.406		.438	6600	450
8-1PA2	8-1AW2	2	1/2	1	1.32	.813	.50	1.64	.406		.438	6000	410
10-1/2PA2	10-1/2AW2	1	5/8	1/2	.850	.938	.72	1.31	.469		.500	4900	330
12-1/2PA2	12-1/2AW2	1	3/4	1/2	.850	1.125	.72	1.50	.500		.531	4900	330
12-3/4PA2	12-3/4AW2	1	3/4	3/4	1.06	1.125	.78	1.41	.500		.656	4900	330
12-1PA2	12-1AW2	2	3/4	1	1.32	1.125	.61	1.66	.500		.656	4600	310
16-1PA2	16-1AW2	1	1	1	1.32	1.375	.88	1.56	.563		.906	3700	250
16-1-1/4PA2	16-1-1/4AW2	2	1	1-1/4	1.67	1.375	.67	1.83	.563		.906	3700	250

"R" bore diameter will conform to schedule 80 pipe wall thickness unless otherwise noted

E-MAIL : info@parsregulator.com
Parsregulator@yahoo.com

www.parsregulator.com

Tel : 88 30 77 66
Fax: 88 83 41 40

FORGED HIGH PRESSURE PIPE FITTINGS

THREADED 2000-3000-6000 Lbs

SOCKET WELD

PIPE FITTINGS

**ELBOW
90°**



socketlet



**ROUND
HEAD
PLUG**



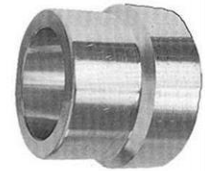
**ELBOW
45°**



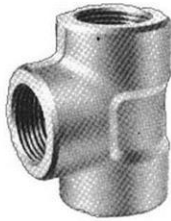
**WELDING
OUTLET**



INSERT



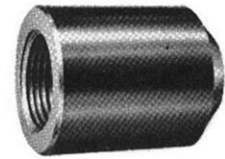
TEE



CAP



BOSS



CROSS



**HEX
HEAD
BUSHING**



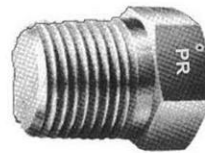
THREDOLET



UNION



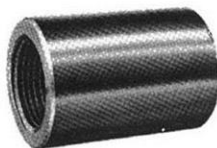
**HEX
HEAD
PLUG**



**HEX
NIPPLE**



COUPLING



COUPLING



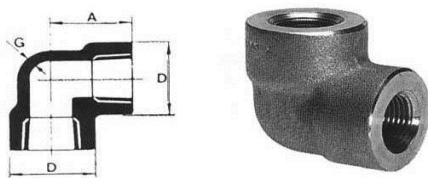
**SWAGE
NIPPLE**



NPT Threaded fittings 3000 & 6000 lbs

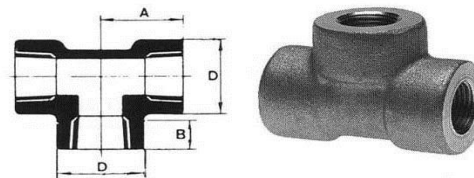
Material: AISI 316/316L

90 Deg Elbow



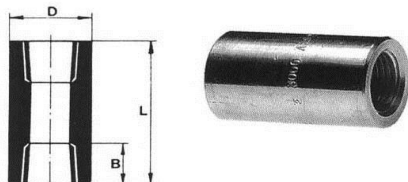
Nom. Pipe size	A mm	D mm	G mm	Weight ~kg
1/4"	20.6	25.4	3.30	0.14
3/8"	24.6	33.3	3.51	0.27
1/2"	28.6	38.1	4.09	0.40
3/4"	33.3	46.0	4.27	0.63
1"	38.1	55.6	4.98	1.10
1 1/4"	44.5	61.9	5.28	1.22
1 1/2"	50.8	75.4	5.54	2.35
2"	60.3	84.1	6.05	3.30

Tee



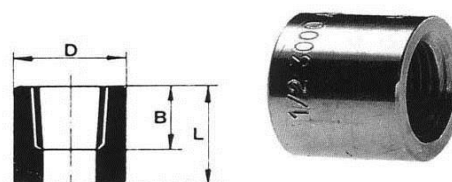
Nom. Pipe size	A mm	D mm	B mm	Weight ~kg
1/4"	24.6	25.4	8.13	0.19
3/8"	28.6	33.3	9.14	0.39
1/2"	33.3	38.1	10.92	0.52
3/4"	38.1	46.0	12.70	0.83
1"	44.5	55.6	14.73	1.38
1 1/4"	50.8	61.9	17.02	1.66
1 1/2"	60.3	75.4	17.78	3.12
2"	63.5	84.1	19.05	4.00

Full Coupling



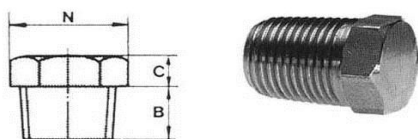
Nom. Pipe size	L mm	D mm	B mm	Weight ~kg
1/4"	34.9	19.1	8.13	0.05
3/8"	38.1	22.2	9.14	0.06
1/2"	47.6	28.6	10.92	0.14
3/4"	50.8	34.9	12.70	0.20
1"	60.3	44.5	14.73	0.40
1 1/4"	66.7	57.6	17.02	0.70
1 1/2"	79.4	63.5	17.78	1.00
2"	85.7	76.2	19.05	1.90

Half Coupling



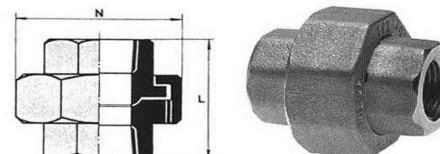
Nom. Pipe size	L mm	D mm	B mm	Weight ~kg
1/4"	17.4	19.1	8.13	0.03
3/8"	19.1	22.2	9.14	0.05
1/2"	23.8	28.6	10.92	0.07
3/4"	25.4	34.9	12.70	0.10
1"	30.2	44.5	14.73	0.20
1 1/4"	33.3	57.2	17.02	0.32
1 1/2"	39.7	63.5	17.78	0.50
2"	42.9	76.2	19.05	0.95

Hexagon Head Male Plug



Nom. Pipe size	B mm	N mm	C mm	Weight ~kg
1/4"	11.11	15.88	6.35	0.03
3/8"	12.70	17.46	7.94	0.05
1/2"	14.29	22.23	7.94	0.08
3/4"	15.88	26.99	9.53	0.15
1"	19.05	34.93	9.53	0.25
1 1/4"	20.64	44.45	14.29	0.50
1 1/2"	20.64	50.80	15.88	0.65
2"	22.23	63.50	17.46	1.10

Union



Nom. Pipe size	L mm	N mm	Weight ~kg
1/4"	42.1	40.5	0.13
3/8"	47.6	47.6	0.20
1/2"	50.0	50.0	0.40
3/4"	57.9	61.1	0.50
1"	63.5	69.9	1.00
1 1/4"	71.4	82.5	1.45
1 1/2"	77.8	92.1	1.60
2"	87.3	108.7	2.50

PIPE FITTINGS

E-MAIL : info@parsregulator.com
Parsregulator@yahoo.com

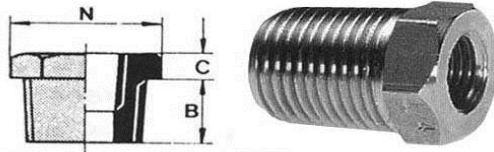
www.parsregulator.com

Tel : 88 30 77 66
Fax: 88 83 41 40

NPT Threaded fittings 3000 & 6000 lbs

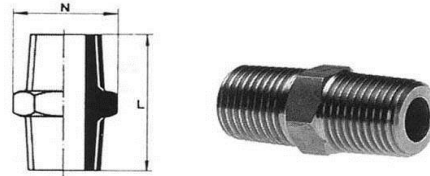
Material: AISI 316/316L

Hexagon Bushing 6000 lbs



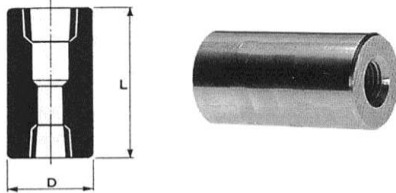
Nom. Pipe size	B mm	N mm	C mm	Weight ~kg
1/2"-1/4"	14.22	22.35	4.83	0.04
3/4"-1/2"	15.88	26.99	5.56	0.06
1-1/2"	19.05	35.05	6.35	0.13
1-3/4"	19.05	34.93	6.35	0.14
1 1/4"-1"	20.64	44.45	7.14	0.32
1 1/2"-1"	20.64	50.80	7.94	0.35
1 1/2"-1 1/4"	20.64	50.80	7.94	0.38
2"-1 1/2"	22.23	63.50	8.73	0.60

Hexagon Nipples



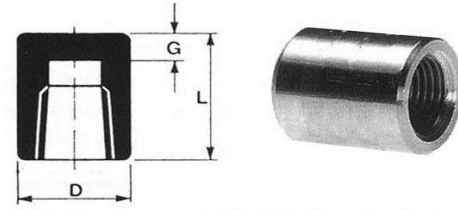
Nom. Pipe size	L mm	N mm	Weight ~kg
1/4"	38	16	0.03
3/8"	43	17	0.06
1/2"	51	22	0.09
3/4"	55.5	27	0.12
1"	63.5	36	0.17
1 1/4"	68	46	0.29
1 1/2"	70	50	0.34
2"	74.5	63	0.55

Reducing Copling



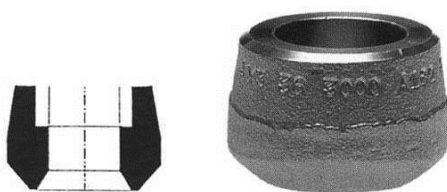
Nom. Pipe size	L mm	D mm	Weight ~kg
1/2x1/4"	47.6	28.6	0.14
3/4"x1/2"	50.8	34.9	0.20
1x1/2"	60.3	44.5	0.40
1x3/4"	60.3	44.5	0.40
1 1/4x1"	66.7	57.2	0.70
1 1/2"x1"	79.4	63.5	1.00
1 1/2"x1 1/4"	79.4	63.5	1.10
2"-1 1/2"	85.7	76.2	1.90

End Cap



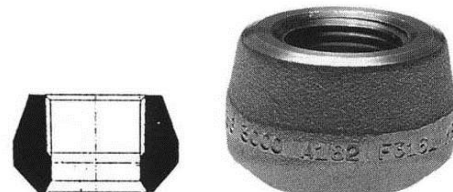
Nom. Pipe size	L mm	D mm	B mm	Weight ~kg
1/4"	25.4	19.1	4.76	0.05
3/8"	25.4	22.2	4.76	0.06
1/2"	31.8	28.6	6.35	0.12
3/4"	36.5	34.9	6.35	0.19
1"	41.3	44.5	9.53	0.35
1 1/4"	44.5	57.2	9.53	0.56
1 1/2"	44.5	63.5	11.11	0.75
2"	47.6	76.2	12.70	1.45

Socket Weld Outlet

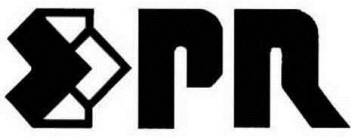


	Weight ~kg
1/2"x2 1/2-36"	0.13
3/4"x2 1/2-36"	0.24
1x3-5"	0.37
1 1/2-3 1/2-5"	0.65
2x3 1/2-5"	1.02

Threaded Outlet



	Weight ~kg
1/2"x2 1/2-36"	0.12
3/4"x2 1/2-36"	0.24
1x3-5"	0.38
1 1/2-3 1/2-5"	0.66
2x3 1/2-5"	0.95



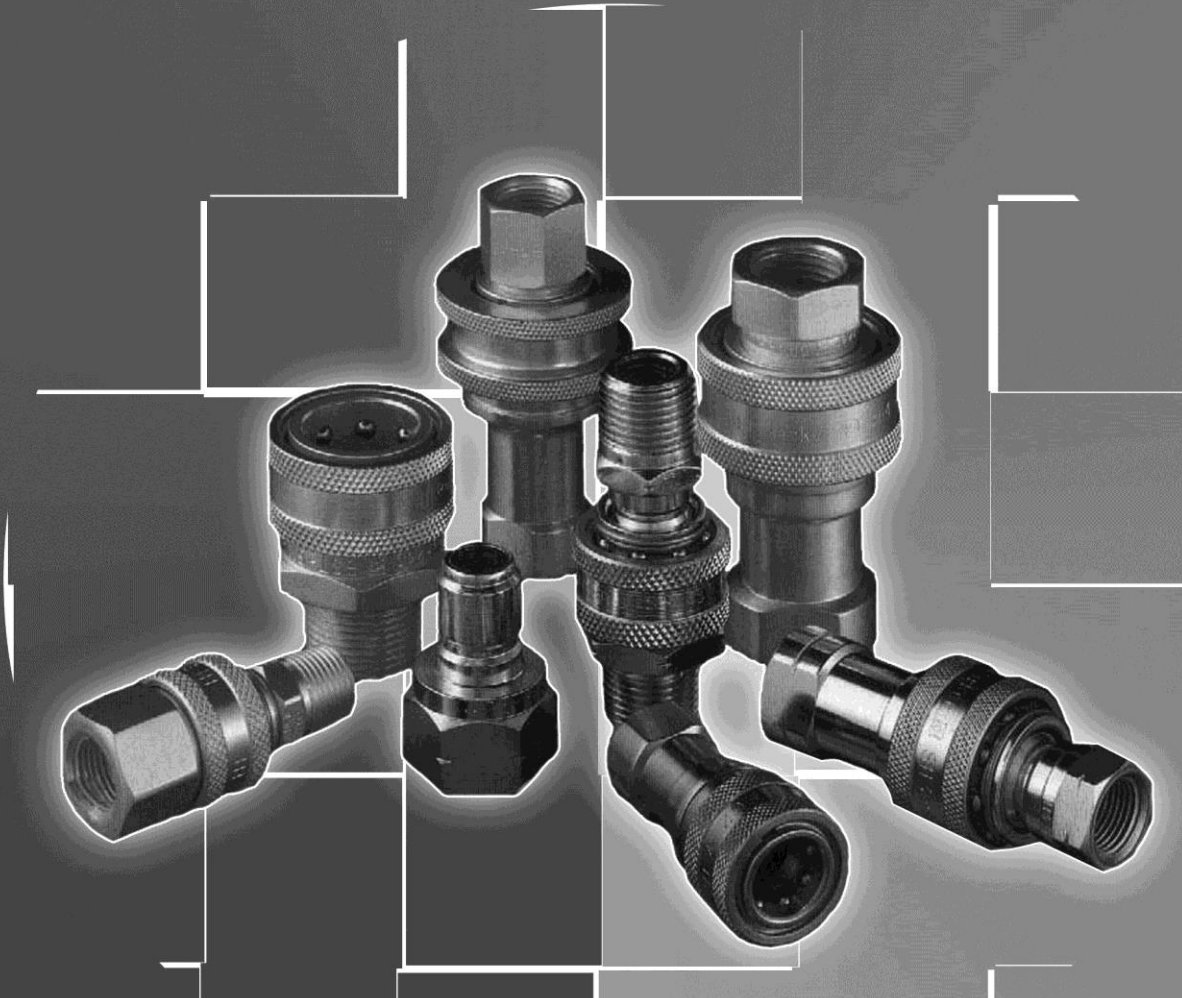
Pars Regulator Co.



شرکت پارس رگولاتور

PARS REGULATOR

*Industrial
Quick Action
Hydraulic Coupling*



E-MAIL : info@parsregulator.com
parsregulator@yahoo.com

www.parsregulator.com

Tel : 88 30 77 66
Fax: 88 83 41 40

Couplers



Body size	Stainless 316	Brass	NPTF	Length mm	Flats mm	sleeve mm
1/8"	SSH1-62	BH1-60	1/8-27	4B.4	14	24
1/4"	SSH2-62	BH2-60	1/4-18	57	19	28.6
3/8"	SSH3-62	BH3-60	3/8-18	63.3	22	35
1/2"	SSH4-62	BH4-60	1/2-14	72.4	28.5	44.5
3/4"	SSH6-62	BH6-60	3/4-14	90.2	33.3	54
1"	SSH8-62	BH8-60	1-11.1/2	106.3	41	63

Body size	Stainless 316	Brass	BSP	Length mm	Flats mm	sleeve mm
1/8"	SSH1-62BSP	BH1-60BSP	1/8"	4B.4	14	24
1/4"	SSH2-62BSP	BH2-60BSP	1/4"	57	19	28.6
3/8"	SSH3-62BSP	BH3-60BSP	3/8"	65.8	22	35
1/2"	SSH4-62BSP	BH4-60BSP	1/2"	74.8	28.5	44.5
3/4"	SSH6-62BSP	BH6-60BSP	3/4"	90.2	33.3	54
1"	SSH8-62BSP	BH8-60BSP	1"	106.3	41	63

Nipples

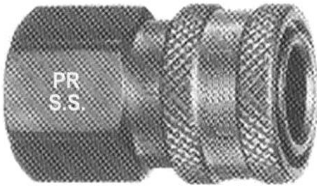


Body size	Stainless 316	Brass	NPTF	Length mm	Flats mm
1/8"	SSH1-63	BH1-61	1/8-27	29.6	14
1/4"	SSH2-63	BH2-61	1/4-18	35	19
3/8"	SSH3-63	BH3-61	3/8-18	38.1	22
1/2"	SSH4-63	BH4-61	1/2-14	44.5	28.5
3/4"	SSH6-63	BH6-61	3/4-14	54.7	35
1"	SSH8-63	BH8-61	1-11.1/2	65.8	41

Body size	Stainless 316	Brass	BSP	Length mm	Flats mm
1/8"	SSH1-63BSP	BH1-61BSP	1/8"	29.6	14
1/4"	SSH2-63BSP	BH2-61BSP	1/4"	35	19
3/8"	SSH3-63BSP	BH3-61BSP	3/8"	40.6	22
1/2"	SSH4-63BSP	BH4-61BSP	1/2"	46.9	28.5
3/4"	SSH6-63BSP	BH6-61BSP	3/4"	54.7	35
1"	SSH8-63BSP	BH8-61BSP	1"	65.8	41

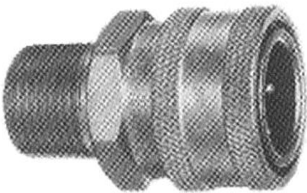
Couplers

Female Pipe Thread



Body size	Stainless steel	Brass	NPTF	Bore mm	Length mm	sleeve mm	Flats mm
1/8"	SST-1	BST-1	1/8-27	4.4	25.4	17.5	14.3
1/4"	SST-2	BST-2	1/4-18	6.4	37	23.9	20.6
3/8"	SST-3	BST-3	3/8-18	10.3	40.5	28.7	25.4
1/2"	SST-4	BST-4	1/2-14	12.7	48.3	33.3	28.4
3/4"	SST-6	BST-6	3/4-14	19.1	52.1	41.1	36.6
1"	SST-8	BST-8	1-11.1/2	24.6	58.7	50.8	44.5
1.1/4"		BST-10	1.1/4-11.1/2	31.8	62	63.5	50.8
1.1/2"		BST-12	1.1/2-11.1/2	38.1	73.2	76.2	63.5

Male Pipe Thread



Body size	Stainless steel	Brass	NPTF	Bore mm	Length mm	sleeve mm	Flats mm
1/8"	SST-1M	BST-1M	1/8-27	4.4	26.9	17.5	14.3
1/4"	SST-2M	BST-2M	1/4-18	6.4	42.9	23.9	20.6
3/8"	SST-3M	BST-3M	3/8-18	10.3	44.5	28.7	25.4
1/2"	SST-4M	BST-4M	1/2-14	12.7	49.3	33.3	28.4
3/4"	SST-6M	BST-6M	3/4-14	19.1	55.4	41.4	36.6
1"	SST-8M	BST-8M	1-11.1/2	24.6	64.3	50.8	44.5

Nipples

Female Pipe Thread



Body size	Stainless steel	steel	Brass	NPTF	Bore mm	Length mm	Flats mm
1/8"	SST-N1	ST-N1	BST-N1	1/8-27	4.4	25.4	14.3
1/4"	SST-N2	ST-N2	BST-N2	1/4-18	6.4	36.6	19.5
3/8"	SST-N3	ST-N3	BST-N3	3/8-18	9.5	41.4	22.2
1/2"	SST-N4	ST-N4	BST-N4	1/2-14	11.9	47.7	28.4
3/4"	SST-N6	ST-N6	BST-N6	3/4-14	18.3	52.3	35
1"	SST-N8	ST-N8	BST-N8	1-11.1/2	24.6	55.6	41.3
1.1/4"			BST-N10	1.1/4-11.1/2	30.2	60.4	50.8
1.1/2"			BST-N12	1.1/2-11.1/2	36.5	71.3	60.4

Male Pipe Thread



Body size	Stainless steel	steel	Brass	NPTF	Bore mm	Length mm	Flats mm
1/8"	SST-N1M	ST-N1M	BST-N1M	1/8-27	4.4	26.9	11.1
1/4"	SST-N2M	ST-N2M	BST-N2M	1/4-18	6.4	40.1	14.2
3/8"	SST-N3M	ST-N3M	BST-N3M	3/8-18	9.5	42.9	17.5
1/2"	SST-N4M	ST-N4M	BST-N4M	1/2-14	11.9	49.3	22.2
3/4"	SST-N6M	ST-N6M	BST-N6M	3/4-14	18.3	56.4	26.9
1"	SST-N8M	ST-N8M	BST-N8M	1-11.1/2	24.6	64.3	35
1.1/2"			BST-N12M	1.1/2-11.1/2	36.5	81.5	53.9

Quick Action

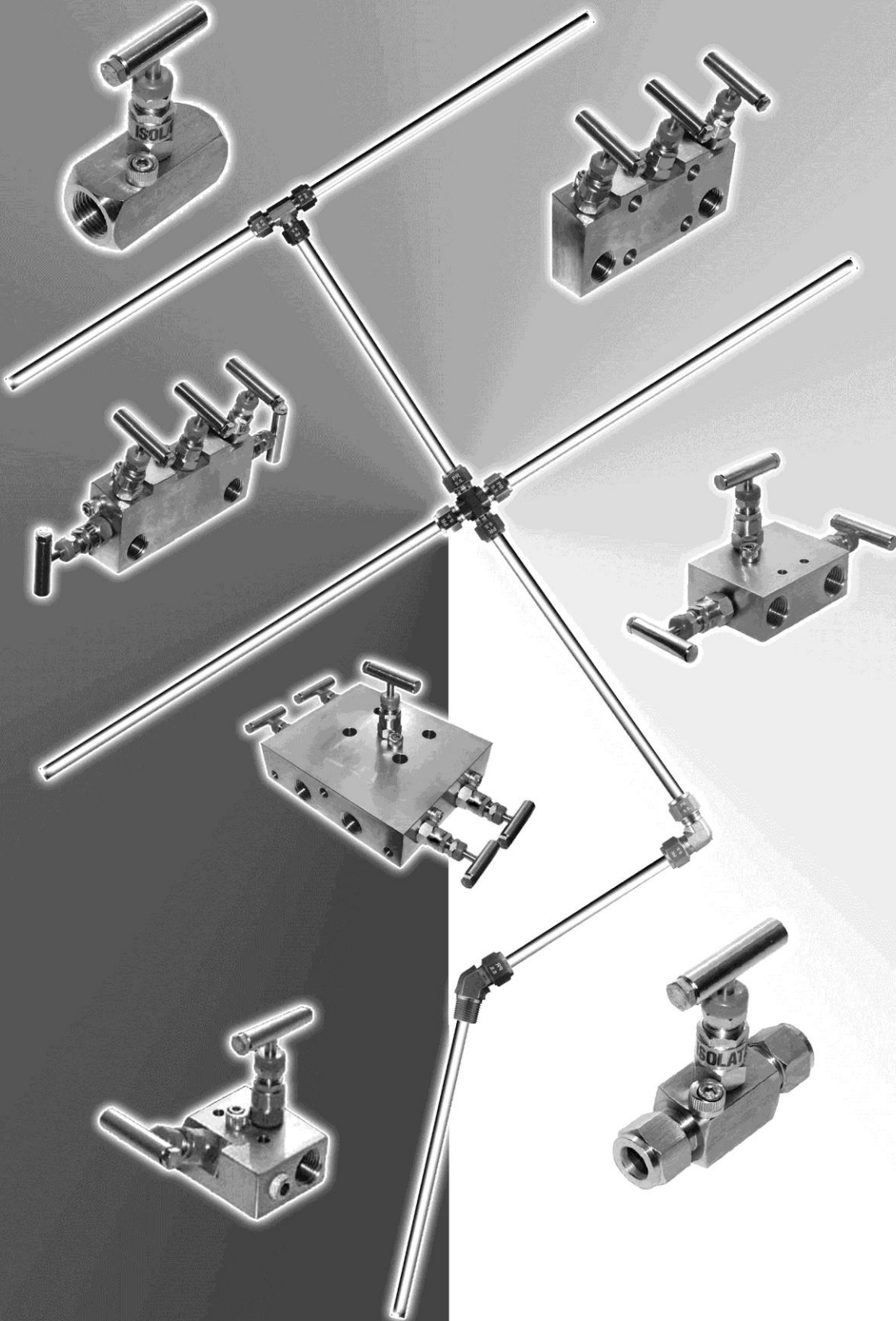
info@parsregulator.com
parsregulator@yahoo.com

E-MAIL :
www.parsregulator.com

Tel : 88 30 77 66
Fax: 88 83 41 40

PARS REGULATOR

Needle Valves & Manifolds
S.S, C.S #3000, #6000



info@parsregulator.com
E-MAIL : parsregulator@yahoo.com

www.parsregulator.com

Tel : 88 30 77 66
Fax: 88 83 41 40

NEEDLE VALVE

(Bar Stock)



Part No.	Inlet	Outlet
NVS 4FF	1/4"NPT-Female	1/4"NPT-Female
NVS 6FF	3/8"NPT-Female	3/8"NPT-Female
NVS 8FF	1/2"NPT-Female	1/2"NPT-Female
NVS 4M4F	1/4"NPT-Male	1/4"NPT-Female
NVS 8M8F	1/2"NPT-Male	1/2"NPT-Female
NVS 12FF	3/4"NPT-Female	3/4"NPT-Female
NVS 12M8F	3/4"NPT-Male	1/2"NPT-Female
NVS 12M12F	3/4"NPT-Male	3/4"NPT-Female
NVS 16FF	1"NPT-Female	1"NPT-Female
NVS 4A	1/4"Tube O.D.	1/4"Tube O.D.
NVS 6A	3/8"Tube O.D.	3/8"Tube O.D.
NVS 8A	1/2"Tube O.D.	1/2"Tube O.D.
NVS M6A	6mmTube O.D.	6mmTube O.D.
NVS M10A	10mmTube O.D.	10mmTube O.D.
NVS M12A	12mmTube O.D.	12mmTube O.D.

NEEDLE VALVE

(With Down Stream Vent)



Part No.	Inlet	Outlet
NVS 4M4FV	1/4"NPT-Male	1/4"NPT-Female
NVS 8M8FV	1/2"NPT-Male	1/2"NPT-Female
NVS 8FFV	1/2"NPT-Female	1/2"NPT-Female
NVS 12M8FV	3/4"NPT-Male	1/2"NPT-Female
NVS 12M12FV	3/4"NPT-Male	3/4"NPT-Female
NVS 12FFV	3/4"NPT-Female	3/4"NPT-Female

NEEDLE VALVE

(Multi Port Gauge Valve)



Part No.	Inlet	Outlet
GVS 8	1/2"NPT-Male	3x1/2"NPT-Female
GVS 12	3/4"NPT-Male	3x1/2"NPT-Female

1) Material Standard:

Body Material: ANSI 316 (S.S316)

Bonnet Material: AISI 316 (S.S316)

2) Mechanical Properties:

2-1) Pressure Rating

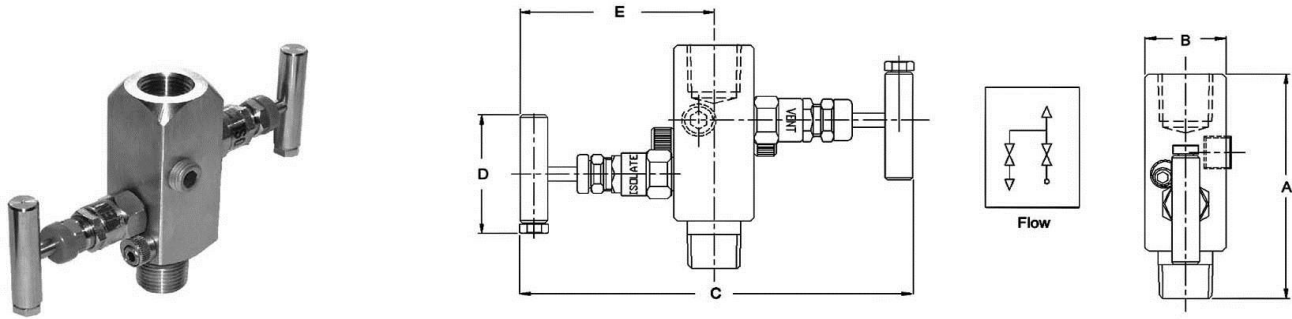
Hydrostatic proof Test = 1.5 x Max Working Pressure
(strength test body and gland seal)

Sealing Test Max = 1.1 x Working Pressure

(The Valve fully Closed and the Outlet Port Open)

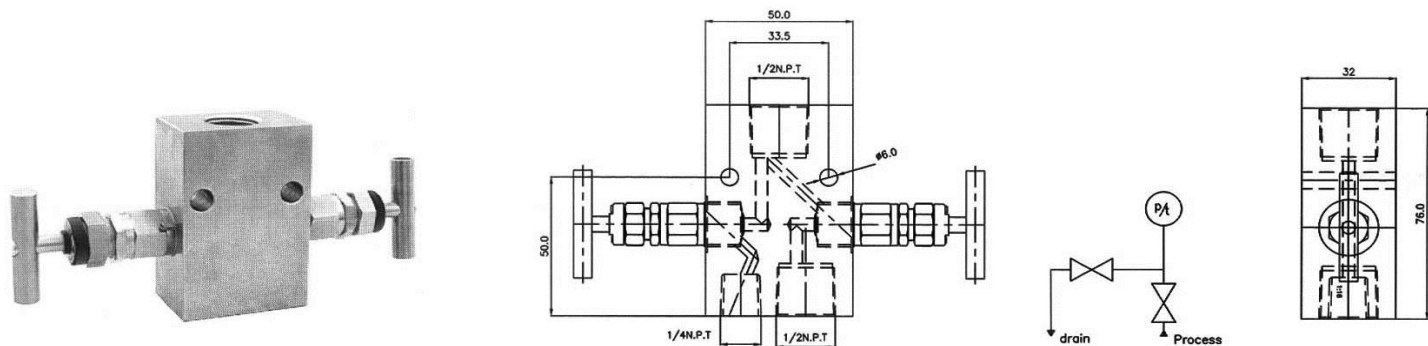
Needle Valve Manifold	For 6000 psi Working Pre	For 3000 psi Working Pre
Max. pre. Rating	6000 psi (413 bar)	3000 psi (207 bar)
Hydrostatic pre. Test (seat)	6600 psi (455 bar)	3300 psi (228 bar)
Hydrostatic pre. Test (body)	9000 psi (620 bar)	4500 psi (310 bar)
Temp rating	-55 to 200C	-55 to 200C

Two Valve Manifold for gauge



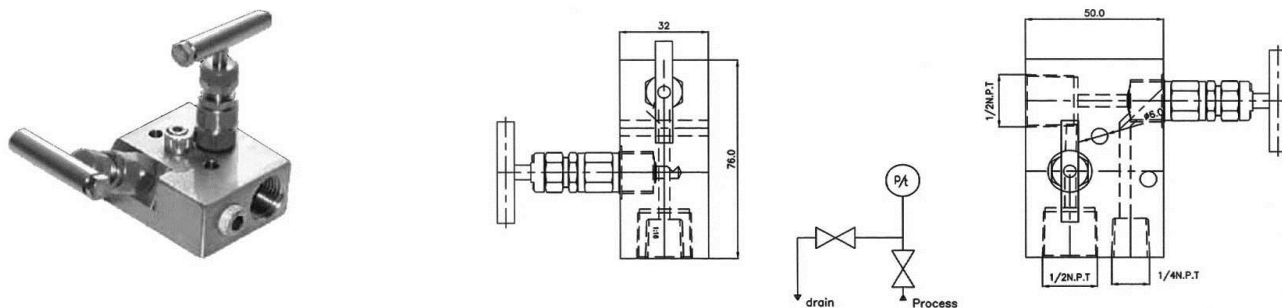
St/St Part N.O	INLET	OUTLET
2VG2NS	1/4"NPT-Male inlet	1/4"NPT-Female outlet
2VG2NS-F	1/4"NPT-Female inlet	1/4" Female outlet
2VG4NS	1/2"NPT-Male inlet	1/2"NPT-Female outlet
2VG4NS-F	1/2"NPT-Female inlet	1/2"NPT-Female outlet

Two Valve Manifold (vertical port inlet)



Part N.O	Inlet	Outlet	Drain/test
LS2V	1/2 NPT-Female	1/2 NPT-Female	1/4 NPT-Female

Two Valve Manifold (for panel mounting)



Part N.O	Inlet	Outlet	Drain/test
LS2H	1/2 NPT-Female	1/2 NPT-Female	1/4 NPT-Female

Two Valve Manifold	For 6000 psi Working Pre	For 3000 psi Working Pre
Max. pre. Rating	6000 psi (413 bar)	3000 psi (207 bar)
Hydrostatic pre. Test (Seat)	6600 psi (455 bar)	3300 psi (228 bar)
Hydrostatic pre. Test (body)	9000 psi (620 bar)	4500 psi (310 bar)
Temp rating	-55 to 200C	-55 to 200C

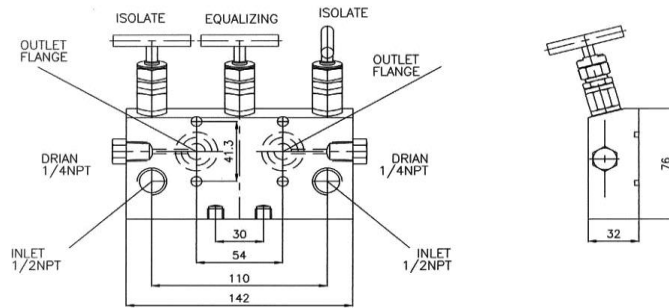
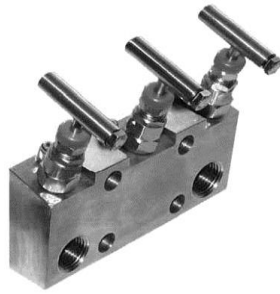
Needle Valves & Manifolds

E-MAIL : info@parsregulator.com
parsregulator@yahoo.com

www.parsregulator.com

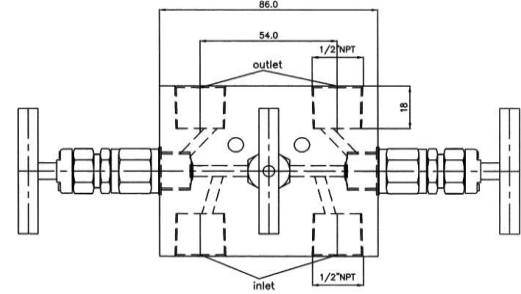
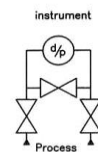
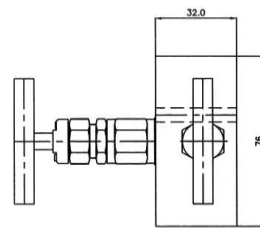
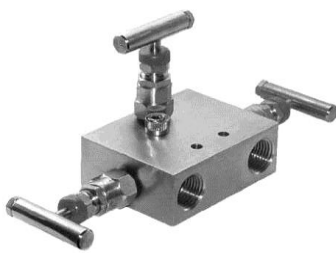
Tel : 88 30 77 66
Fax: 88 83 41 40

3 Way Manifold (for divert mounting)



Part N.O	Inlet	Outlet
DS3	1/2 NPT-Female	Flanged

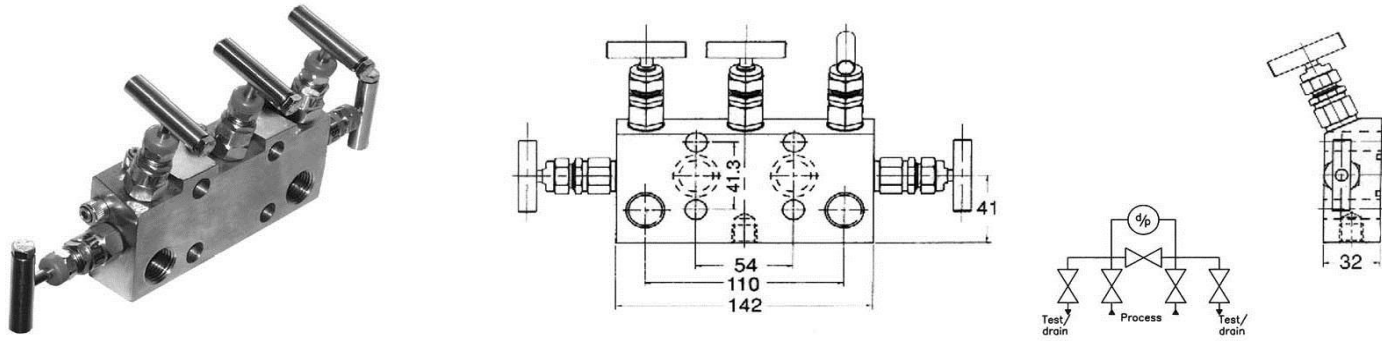
3Way Manifold (for line remote instalation)



Part N.O	Inlet	Outlet
LS3H	1/2 NPT-Female	1/2 NPT-Female

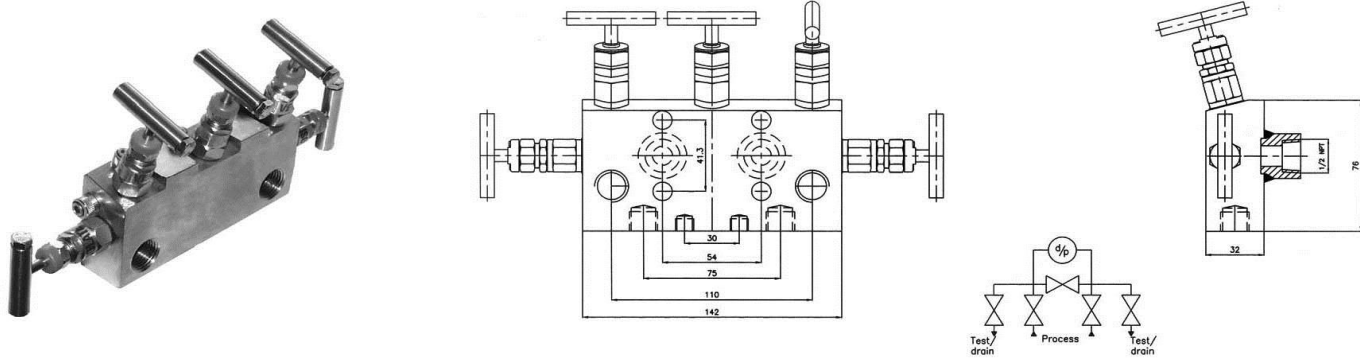
Three Valve Manifold	For 6000 psi Working Pre	For 3000 psi Working Pre
Max. pre. Rating	6000 psi (413 bar)	3000 psi (207 bar)
Hydrostatic pre. Test (Seat)	6600 psi (455 bar)	3300 psi (228 bar)
Hydrostatic pre. Test (body)	9000 psi (620 bar)	4500 psi (310 bar)
Temp rating	-55 to 200C	-55 to 200C

5 Way Manifold (for divert mounting)



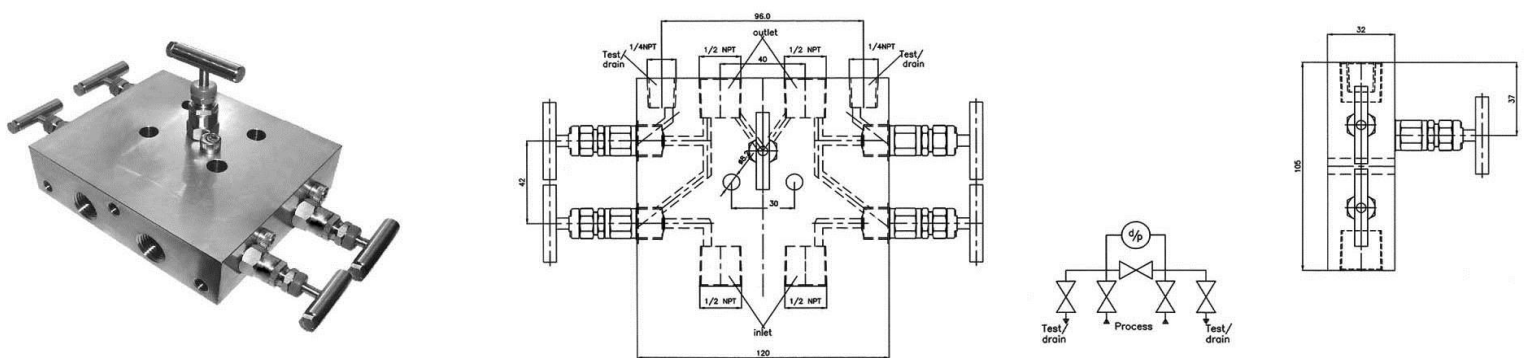
Part N.O	Inlet	Outlet
DS5	1/2 NPT-Female	Flanged

5Way Manifold (for liner or remote mounting)



Part N.O	Inlet	Outlet
LS5	1/2 NPT-Female	1/2 NPT-Female

5Way Manifold (for line mounting)



Part N.O	Inlet	Outlet
LS5H	1/2 NPT-Female	1/2 NPT-Female

Three Valve Manifold	For 6000 psi Working Pre	For 3000 psi Working Pre
Max. pre. Rating	6000 psi (413 bar)	3000 psi (207 bar)
Hydrostatic pre. Test (Seat)	6600 psi (455 bar)	3300 psi (228 bar)
Hydrostatic pre. Test (body)	9000 psi (620 bar)	4500 psi (310 bar)
Temp rating	-55 to 200C	-55 to 200C

Needle Valves & Manifolds

info@parsregulator.com
parsregulator@yahoo.com

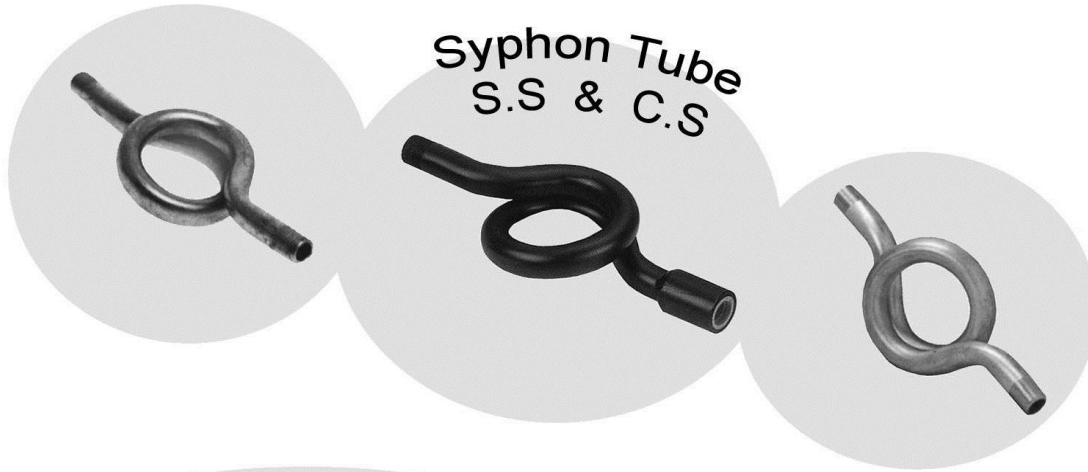
www.parsregulator.com

Tel : 88 30 77 66
Fax: 88 83 41 40

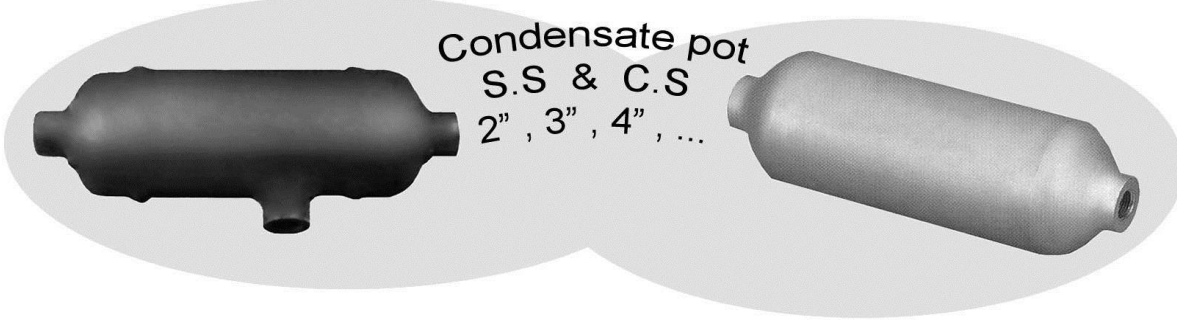
E-MAIL : info@parsregulator.com
parsregulator@yahoo.com

www.parsregulator.com

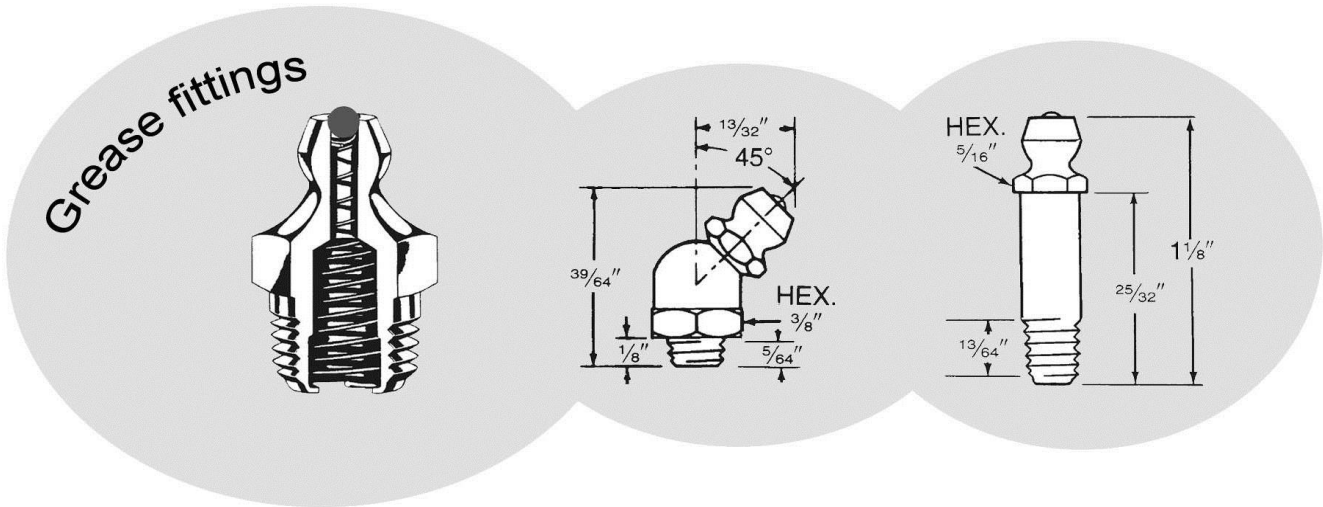
Tel : 88 30 77 66
Fax: 88 83 41 40



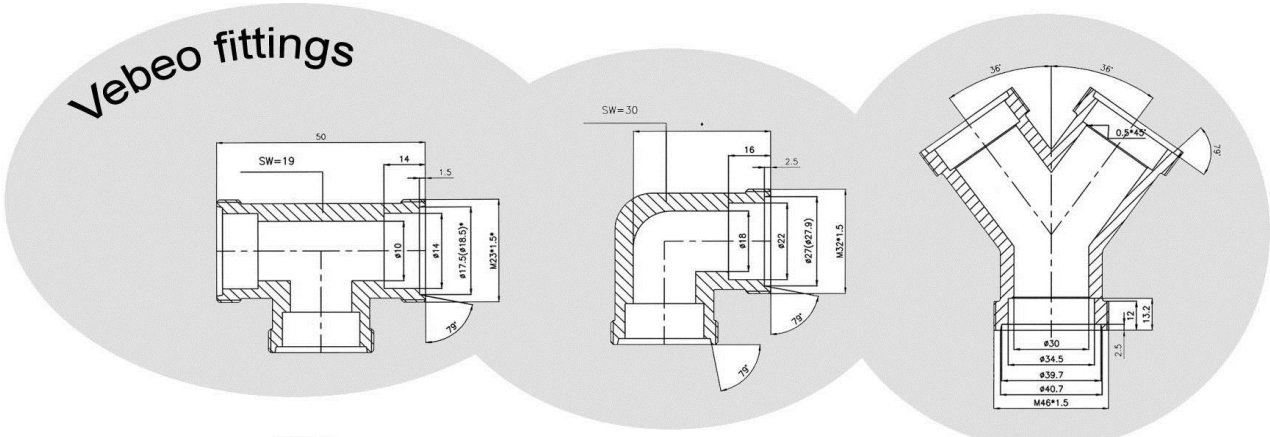
Syphon Tube
S.S & C.S



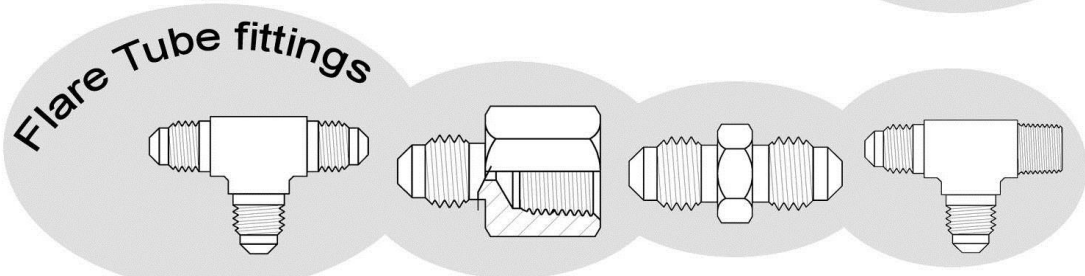
Condensate pot
S.S & C.S
2" , 3" , 4" , ...



Grease fittings



Vebeo fittings



Flare Tube fittings