



PARS REGULATOR CO.

PIPE FITTINGS , FLANGES , VALVES , PIPE & TUBE
STAINLESS STEEL , CARBON STEEL & ALLOY STEEL





شرکت پارس رگولاتور (سهامی خاص) با هدف تولید انواع شیر آلات، رگولاتورها، اتصالات فشار قوی و ابزار دقیق، فیلترها، فلنج هاو مخازن تحت فشار صنایع نفت و گاز و پتروشیمی و پالایشگاهی در سال 1367 تاسیس گردید و دارای گواهینامه ها

ISO 14001:2004 & ISO 9001:2008 OHSAS 18001:2007

می باشد که با استفاده از استانداردهای جهانی و به کارگیری توان متخصصین و استفاده از تجهیزات پیشرفته در لیست تولید کنندگان مورد تایید

(Approved Vendor List -AVL)

صنایع نفت و گاز و پتروشیمی قرار گرفته است. چشم انداز مدیریت پارس رگولاتور با به کارگیری استانداردهای جهانی و توان متخصصین، همواره بر این است که علاوه بر فراهم نمودن رضایت مشتریان، در بازارهای داخلی و بین المللی حضور داشته باشد

THE EQUIPMENT



Machining Unit

واحد ماشینکاری



Cutting Unit

واحد برش



Die Forging Unit

واحد قالبسازی فورج

THE EQUIPMENT



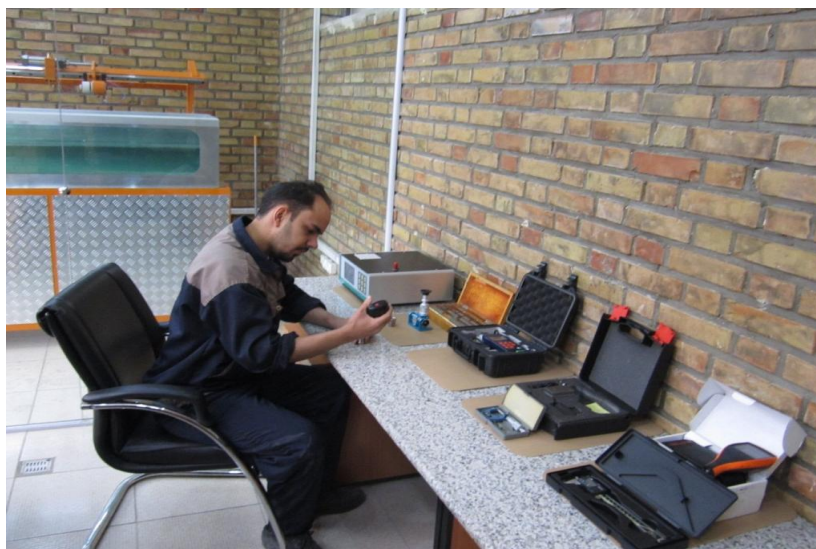
Forging Unit

واحد آهنگری



Boring Unit

واحد سوراخ کاری



Laboratory Unit

واحد آزمایشگاه

THE EQUIPMENT



CNC Unit

واحد CNC



Hydrotest Unit

واحد هیدروتست



Marking Unit

واحد حکاکی

Type:

1. Elbow, Cross, Street Elbow, Tee, Boss, Coupling, Half coupling, Cap, Plug, Bushing, Union, Swage Nipple, Bull Plug, Reducer Insert, Pipe Nipple, etc.
2. Socket-Weld or threaded (NPT or PT TYPE)

Size:

NPS 1/8" ~ 4" (6mm ~ 100mm)

Pressure: Threaded Wog: 2000, 3000 and 6000 Lbs/ Socket- welding

Wog: 2000, 3000 and 6000 Lbs

Butt Weld End- Sch 40/Sch80/Sch160/XXS

Specifications:

1. Dim. Spec: ASME B 16.11-1996 (Revision of ANSI B16.11-1991), MSS- SP-79\ 83\ 95\97
2. Material Spec: ASTM A105, ASTM A182 (F304, F304L, F316, F316L, F304H, F316H, F317L, F321, F11, F22, F91).
3. Size of raw material: Dia. 19-85 mm round Bar.

Marking:

1. Carbon and Alloy Steel: Marked by Stamping.
2. Stainless: Marked by Electro-Etched or Jet Printed or Stamped.
3. 3/8" Under: Brand Only.
4. 1/2" to 4": Marked Brand, Material, Heat No. B16 (Belong to ANSI B16. 11 Product), Pressure and size.

Finishing:

Carbon Steel-Galvanized or Black.

Low alloy steel-black





Stainless Steel: Pickled

Packing:

Carton/wooden case





Production process chart

Forging:

Round Bars  Cutting  Heating  Forging  Chamfering




Heat Treatment  Surface treatment  rough forgings


Machining –Socket Weld:

Rough forgling  Drilling  Facing  Boring  Dimensional test



Marking  Cleaning  Surface treatment  Final Inspection  Finished
(Rust-Proof for Carbon & alloy steel)

Machining- Threaded:

Rough forgling  Drilling-Facing  Boring  threading

Dimensional check  Marking  Cleaning  Surface Treatment  Final inspection
Finished
(Rust-Proof for Carbon & alloy steel)

Delivery:

Customer's Order  Production control  Heat No. Identification

Material Certification Document

Packing  Shipping

info@parsregulator.com
E-MAIL : Parsregulator@yahoo.com

www.parsregulator.com

Tel : 88 30 77 66
Fax: 88 83 41 40

PICTURE

CAP



TEE



ELBOW 45°



ELBOW 90°



ROUND HEAD PLUG



HALF COUPLING



COUPLING



CROSS



HEX HEAD PLUG



HEX NIPPLE



BOSS



STREET ELBOW



HEX HEAD BUSHING



REDUCER



UNION SW



UNION NPT



NIPPLE



OUTLET



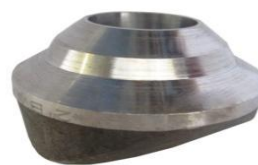
BULL PLUG



SWAGE NIPPLE



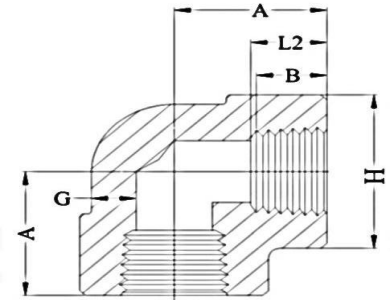
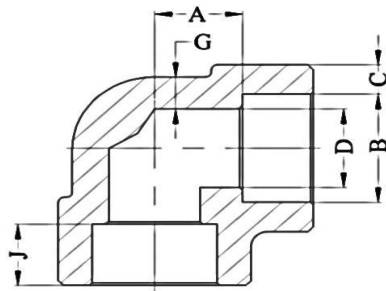
WELDOLET



P
I
P
E
F
I
T
T
I
N
G
S

90 ° ELBOW

ASME B16.11-2009(Revision of ASME B16.11-2005)



Dimensions in Milimeters.

ORDER ITEM	DN	Nom Pipe Size	B ⁽²⁾		C ⁽¹⁾		D ⁽²⁾	A ⁽²⁾	G (Min)	j (Min)
			(Avg)	(Min)	(Avg)	(Min)				

3000Lb										
	6	1/8	10.8	3.18	3.18	6.9	11	2.41	9.5	
	8	1/4	14.2	3.78	3.3	9.3	11	3.02	9.5	
	10	3/8	17.6	4.01	3.5	12.6	13.5	3.2	9.5	
	15	1/2	21.8	4.67	4.09	15.8	15.5	3.73	9.5	
	20	3/4	27.2	4.9	4.27	21	19	3.91	12.5	
	25	1	33.9	5.69	4.98	26.7	22.5	4.55	12.5	
	32	1-1/4	42.7	6.07	5.28	35.1	27	4.85	12.5	
	40	1-1/2	48.8	6.35	5.54	40.9	32	5.08	12.5	
	50	2	61.2	6.93	6.04	52.5	38	5.54	16	
	65	2-1/2	73.9	8.76	7.67	62.7	41	7.01	16	
	80	3	89.8	9.52	8.3	78	57	7.62	16	
	100	4	115.2	10.69	9.35	102.3	66.5	8.56	19	

6000Lb										
	6	1/8	10.8	3.96	3.43	4	11	3.15	9.5	
	8	1/4	14.2	4.6	4.01	6.4	13.5	3.68	9.5	
	10	3/8	17.6	5.03	4.37	9.2	15.5	4.01	9.5	
	15	1/2	21.8	5.97	5.18	11.8	19	4.78	9.5	
	20	3/4	27.2	6.96	6.04	15.6	22.5	5.56	12.5	
	25	1	33.9	7.92	6.93	20.7	27	6.35	12.5	
	32	1-1/4	42.7	7.92	6.93	29.5	32	6.35	12.5	
	40	1-1/2	48.8	8.92	7.8	34	38	7.14	12.5	
	50	2	61.2	10.92	9.5	42.9	41	8.74	16	

9000Lb										
	15	1/2	21.8	9.35	8.18	6.4	25.5	7.47	9.5	
	20	3/4	27.2	9.78	8.56	11.1	28.5	7.82	12.5	
	25	1	33.9	11.38	9.96	15.2	32	9.09	12.5	
	32	1-1/4	42.7	12.14	10.62	22.8	35	9.7	12.5	
	40	1-1/2	48.8	12.7	11.12	28	38	10.15	12.5	
	50	2	61.2	13.84	12.12	38.2	54	11.07	16	

(1) Average of socket Wall Thickness around periphery shall be no less than listed values. The minimum values are permitted in localized areas.
(2) Tolerance see page 14

Dimensions in Milimeters.

ORDER ITEM	DN	Nom Pipe Size	Length of Thread (Min)		A	G (Min)	H
			B ^(*)	L2 ^(*)			

2000Lb							
	6	1/8	6.4	6.7	21	3.18	22
	8	1/4	8.1	10.2	21	3.18	22
	10	3/8	9.1	10.4	25	3.18	25
	15	1/2	10.9	13.6	28	3.18	33
	20	3/4	12.7	13.9	33	3.18	38
	25	1	14.7	17.3	38	3.68	46
	32	1-1/4	17	18	44	3.89	56
	40	1-1/2	17.8	18.4	51	4.01	62
	50	2	19	19.2	60	4.27	75
	65	2-1/2	23.6	28.9	76	5.61	92
	80	3	25.9	30.5	86	5.99	109
	100	4	27.7	33	106	6.55	146

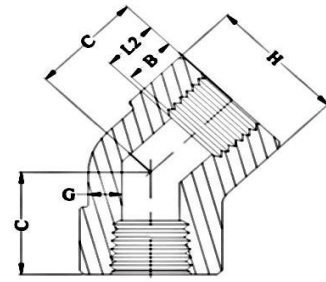
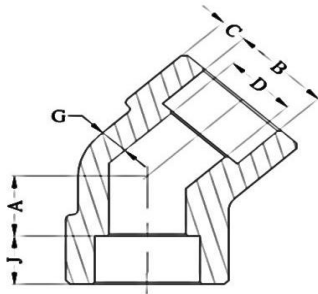
3000Lb							
	6	1/8	6.4	6.7	21	3.18	22
	8	1/4	8.1	10.2	25	3.3	25
	10	3/8	9.1	10.4	28	3.51	33
	15	1/2	10.9	13.6	33	4.09	38
	20	3/4	12.7	13.9	38	4.32	46
	25	1	14.7	17.3	44	4.98	56
	32	1-1/4	17	18	51	5.28	62
	40	1-1/2	17.8	18.4	60	5.56	75
	50	2	19	19.2	64	7.14	84
	65	2-1/2	23.6	28.9	83	7.65	102
	80	3	25.9	30.5	95	8.84	121
	100	4	27.7	33	114	11.18	152

6000Lb							
	6	1/8	6.4	6.7	25	6.35	25
	8	1/4	8.1	10.2	28	6.6	33
	10	3/8	9.1	10.4	33	6.98	38
	15	1/2	10.9	13.6	38	8.15	46
	20	3/4	12.7	13.9	44	8.53	56
	25	1	14.7	17.3	51	9.93	62
	32	1-1/4	17	18	60	10.59	75
	40	1-1/2	17.8	18.4	64	11.07	84
	50	2	19	19.2	83	12.09	102
	65	2-1/2	23.6	28.9	95	15.29	121
	80	3	25.9	30.5	106	16.64	146
	100	4	27.7	33	114	18.67	152

(*) Dimension B is minimum length of perfect thread. The length of useful thread (B plus threads with fully formed roots and flat crests) shall not be less than L2 (effective length of external thread) required by American National Standard for pipe threads (ANSI/ASME B1.20.1).

45 ° ELBOW

ASME B16.11-2009(Revision of ASME B16.11-2005)



Dimensions in Millimeters.

Dimensions in Millimeters.

ORDER ITEM	DN	Nom Pipe Size	B ⁽²⁾	C ⁽¹⁾		D ⁽²⁾	A ⁽²⁾	G (Min)	j (Min)
				(Avg)	(Min)				

3000Lb									
	6	1/8	10.8	3.18	3.18	6.9	8	2.41	9.5
	8	1/4	14.2	3.78	3.3	9.3	8	3.02	9.5
	10	3/8	17.6	4.01	3.5	12.6	8	3.2	9.5
	15	1/2	21.8	4.67	4.09	15.8	11	3.73	9.5
	20	3/4	27.2	4.9	4.27	21	13	3.91	12.5
	25	1	33.9	5.69	4.98	26.7	14	4.55	12.5
	32	1-1/4	42.7	6.07	5.28	35.1	17.5	4.85	12.5
	40	1-1/2	48.8	6.35	5.54	40.9	20.5	5.08	12.5
	50	2	61.2	6.93	6.04	52.5	25.5	5.54	16
	65	2-1/2	73.9	8.76	7.67	62.7	28.5	7.01	16
	80	3	89.8	9.52	8.3	78	32	7.62	16
	100	4	115.2	10.69	9.35	102.3	41	8.56	19

ORDER ITEM	DN	Nom Pipe Size	Length of Thread (Min)		C	G (Min)	H
			B ^(*)	L2 ^(*)			

2000Lb							
	6	1/8	6.4	6.7	17	3.18	22
	8	1/4	8.1	10.2	17	3.18	22
	10	3/8	9.1	10.4	19	3.18	25
	15	1/2	10.9	13.6	22	3.18	33
	20	3/4	12.7	13.9	25	3.18	38
	25	1	14.7	17.3	28	3.68	46
	32	1-1/4	17	18	33	3.89	56
	40	1-1/2	17.8	18.4	35	4.01	62
	50	2	19	19.2	43	4.27	75
	65	2-1/2	23.6	28.9	52	5.61	92
	80	3	25.9	30.5	64	5.99	109
	100	4	27.7	33	79	6.55	146

6000Lb									
	6	1/8	10.8	3.96	3.43	4	8	3.15	9.5
	8	1/4	14.2	4.6	4.01	6.4	8	3.68	9.5
	10	3/8	17.6	5.03	4.37	9.2	11	4.01	9.5
	15	1/2	21.8	5.97	5.18	11.8	12.5	4.78	9.5
	20	3/4	27.2	6.96	6.04	15.6	14	5.56	12.5
	25	1	33.9	7.92	6.93	20.7	17.5	6.35	12.5
	32	1-1/4	42.7	7.92	6.93	29.5	20.5	6.35	12.5
	40	1-1/2	48.8	8.92	7.8	34	25.5	7.14	12.5
	50	2	61.2	10.92	9.5	42.9	28.5	8.74	16

3000Lb							
	6	1/8	6.4	6.7	17	3.18	22
	8	1/4	8.1	10.2	19	3.3	25
	10	3/8	9.1	10.4	22	3.51	33
	15	1/2	10.9	13.6	25	4.09	38
	20	3/4	12.7	13.9	28	4.32	46
	25	1	14.7	17.3	33	4.98	56
	32	1-1/4	17	18	35	5.28	62
	40	1-1/2	17.8	18.4	43	5.56	75
	50	2	19	19.2	44	7.14	84
	65	2-1/2	23.6	28.9	52	7.65	102
	80	3	25.9	30.5	64	8.84	121
	100	4	27.7	33	79	11.18	152

9000Lb									
	15	1/2	21.8	9.35	8.18	6.4	15.5	7.47	9.5
	20	3/4	27.2	9.78	8.56	11.1	19	7.82	12.5
	25	1	33.9	11.38	9.96	15.2	20.5	9.09	12.5
	32	1-1/4	42.7	12.14	10.62	22.8	22.5	9.7	12.5
	40	1-1/2	48.8	12.7	11.12	28	25.5	10.15	12.5
	50	2	61.2	13.84	12.12	38.2	28.5	11.07	16

6000Lb							
	6	1/8	6.4	6.7	19	6.35	25
	8	1/4	8.1	10.2	22	6.6	33
	10	3/8	9.1	10.4	25	6.98	38
	15	1/2	10.9	13.6	28	8.15	46
	20	3/4	12.7	13.9	33	8.53	56
	25	1	14.7	17.3	35	9.93	62
	32	1-1/4	17	18	43	10.59	75
	40	1-1/2	17.8	18.4	44	11.07	84
	50	2	19	19.2	52	12.09	102
	65	2-1/2	23.6	28.9	64	15.29	121
	80	3	25.9	30.5	79	16.64	146
	100	4	27.7	33	79	18.67	152

(1) Average of socket Wall Thickness around periphery shall be no less than listed values. The minimum values are permitted in localized areas.

(2) Tolerance see page 14

(*) Dimension B is minimum length of perfect thread. The length of useful thread (B plus threads with fully formed roots and flat crests) shall not be less than L2 (effective length of external thread) required by American National Standard for pipe threads (ANSI/ ASME B1.20.1).

info@parsregulator.com
Parsregulator@yahoo.com

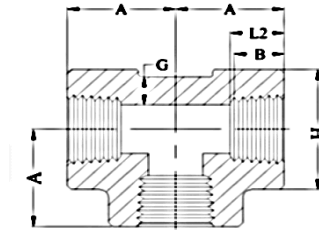
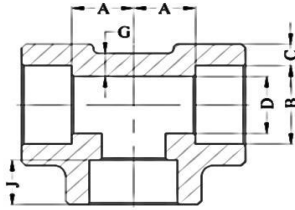
www.parsregulator.com

Tel : 88 30 77 66
Fax: 88 83 41 40

P I P E F I T T I N G S

TEE

ASME B16.11-2009(Revision of ASME B16.11-2005)



Dimensions in Milimeters.

Dimensions in Milimeters.

ORDER ITEM	DN	Nom Pipe Size	B ⁽²⁾		C ⁽¹⁾		D ⁽²⁾	A ⁽²⁾	G (Min)	j (Min)
			(Avg)	(Min)	(Avg)	(Min)				

3000Lb

6	1/8	10.8	3.18	3.18	6.9	11	2.41	9.5
8	1/4	14.2	3.78	3.3	9.3	11	3.02	9.5
10	3/8	17.6	4.01	3.5	12.6	13.5	3.2	9.5
15	1/2	21.8	4.67	4.09	15.8	15.5	3.73	9.5
20	3/4	27.2	4.9	4.27	21	19	3.91	12.5
25	1	33.9	5.69	4.98	26.7	22.5	4.55	12.5
32	1-1/4	42.7	6.07	5.28	35.1	27	4.85	12.5
40	1-1/2	48.8	6.35	5.54	40.9	32	5.08	12.5
50	2	61.2	6.93	6.04	52.5	38	5.54	16
65	2-1/2	73.9	8.76	7.67	62.7	41	7.01	16
80	3	89.8	9.52	8.3	78	57	7.62	16
100	4	115.2	10.69	9.35	102.3	66.5	8.56	19

6000Lb

6	1/8	10.8	3.96	3.43	4	11	3.15	9.5
8	1/4	14.2	4.6	4.01	6.4	13.5	3.68	9.5
10	3/8	17.6	5.03	4.37	9.2	15.5	4.01	9.5
15	1/2	21.8	5.97	5.18	11.8	19	4.78	9.5
20	3/4	27.2	6.96	6.04	15.6	22.5	5.56	12.5
25	1	33.9	7.92	6.93	20.7	27	6.35	12.5
32	1-1/4	42.7	7.92	6.93	29.5	32	6.35	12.5
40	1-1/2	48.8	8.92	7.8	34	38	7.14	12.5
50	2	61.2	10.92	9.5	42.9	41	8.74	16

9000Lb

15	1/2	21.8	9.35	8.18	6.4	25.5	7.47	9.5
20	3/4	27.2	9.78	8.56	11.1	28.5	7.82	12.5
25	1	33.9	11.38	9.96	15.2	32	9.09	12.5
32	1-1/4	42.7	12.14	10.62	22.8	35	9.7	12.5
40	1-1/2	48.8	12.7	11.12	28	38	10.15	12.5
50	2	61.2	13.84	12.12	38.2	54	11.07	16

ORDER ITEM	DN	Nom Pipe Size	Length of Thread (Min)		A	G (Min)	H
			B ^(*)	L2 ^(*)			

2000Lb

6	1/8	6.4	6.7	21	3.18	22
8	1/4	8.1	10.2	21	3.18	22
10	3/8	9.1	10.4	25	3.18	25
15	1/2	10.9	13.6	28	3.18	33
20	3/4	12.7	13.9	33	3.18	38
25	1	14.7	17.3	38	3.68	46
32	1-1/4	17	18	44	3.89	56
40	1-1/2	17.8	18.4	51	4.01	62
50	2	19	19.2	60	4.27	75
65	2-1/2	23.6	28.9	76	5.61	92
80	3	25.9	30.5	86	5.99	109
100	4	27.7	33	106	6.55	146

3000Lb

6	1/8	6.4	6.7	21	3.18	22
8	1/4	8.1	10.2	25	3.3	25
10	3/8	9.1	10.4	28	3.51	33
15	1/2	10.9	13.6	33	4.09	38
20	3/4	12.7	13.9	38	4.32	46
25	1	14.7	17.3	44	4.98	56
32	1-1/4	17	18	51	5.28	62
40	1-1/2	17.8	18.4	60	5.56	75
50	2	19	19.2	64	7.14	84
65	2-1/2	23.6	28.9	83	7.65	102
80	3	25.9	30.5	95	8.84	121
100	4	27.7	33	114	11.18	152

6000Lb

6	1/8	6.4	6.7	25	6.35	25
8	1/4	8.1	10.2	28	6.6	33
10	3/8	9.1	10.4	33	6.98	38
15	1/2	10.9	13.6	38	8.15	46
20	3/4	12.7	13.9	44	8.53	56
25	1	14.7	17.3	51	9.93	62
32	1-1/4	17	18	60	10.59	75
40	1-1/2	17.8	18.4	64	11.07	84
50	2	19	19.2	83	12.09	102
65	2-1/2	23.6	28.9	95	15.29	121
80	3	25.9	30.5	106	16.64	146
100	4	27.7	33	114	18.67	152

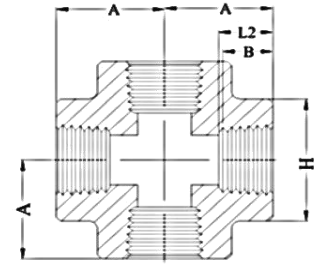
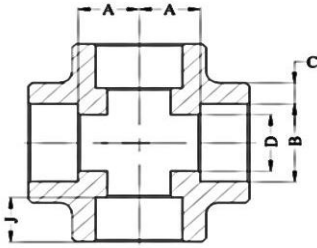
(1) Average of socket Wall Thickness around periphery shall be no less than listed values. The minimum values are permitted in localized areas.

(2) Tolerance see page 14

(*) Dimension B is minimum length of perfect thread. The length of useful thread (B plus threads with fully formed roots and flat crests) shall not be less than L2 (effective length of external thread) required by American National Standard for pipe threads (ANSI/ ASME B1.20.1).

CROSS

ASME B16.11-2009(Revision of ASME B16.11-2005)



Dimensions in Millimeters.

Dimensions in Millimeters.

ORDER ITEM	DN	Nom Pipe Size	B ⁽²⁾		C ⁽¹⁾		D ⁽²⁾	A ⁽²⁾	j (Min)
			(Avg)	(Min)	(Avg)	(Min)			
3000Lb									
	6	1/8	10.8	3.18	3.18	6.9	11	9.5	
	8	1/4	14.2	3.78	3.3	9.3	11	9.5	
	10	3/8	17.6	4.01	3.5	12.6	13.5	9.5	
	15	1/2	21.8	4.67	4.09	15.8	15.5	9.5	
	20	3/4	27.2	4.9	4.27	21	19	12.5	
	25	1	33.9	5.69	4.98	26.7	22.5	12.5	
	32	1-1/4	42.7	6.07	5.28	35.1	27	12.5	
	40	1-1/2	48.8	6.35	5.54	40.9	32	12.5	
	50	2	61.2	6.93	6.04	52.5	38	16	
	65	2-1/2	73.9	8.76	7.67	62.7	41	16	
	80	3	89.8	9.52	8.3	78	57	16	
	100	4	115.2	10.69	9.35	102.3	66.5	19	

ORDER ITEM	DN	Nom Pipe Size	Length of Thread (Min)		A	H
			B ^(*)	L2 ^(*)		
2000Lb						
	6	1/8	6.4	6.7	21	22
	8	1/4	8.1	10.2	21	22
	10	3/8	9.1	10.4	25	25
	15	1/2	10.9	13.6	28	33
	20	3/4	12.7	13.9	33	38
	25	1	14.7	17.3	38	46
	32	1-1/4	17	18	44	56
	40	1-1/2	17.8	18.4	51	62
	50	2	19	19.2	60	75
	65	2-1/2	23.6	28.9	76	92
	80	3	25.9	30.5	86	109
	100	4	27.7	33	106	146

ORDER ITEM	DN	Nom Pipe Size	B ⁽²⁾ (Avg)	B ⁽²⁾ (Min)	C ⁽¹⁾ (Avg)	C ⁽¹⁾ (Min)	D ⁽²⁾	A ⁽²⁾	j (Min)
6000Lb									
	6	1/8	10.8	3.96	3.43	4	11	9.5	
	8	1/4	14.2	4.6	4.01	6.4	13.5	9.5	
	10	3/8	17.6	5.03	4.37	9.2	15.5	9.5	
	15	1/2	21.8	5.97	5.18	11.8	19	9.5	
	20	3/4	27.2	6.96	6.04	15.6	22.5	12.5	
	25	1	33.9	7.92	6.93	20.7	27	12.5	
	32	1-1/4	42.7	7.92	6.93	29.5	32	12.5	
	40	1-1/2	48.8	8.92	7.8	34	38	12.5	
	50	2	61.2	10.92	9.5	42.9	41	16	

ORDER ITEM	DN	Nom Pipe Size	B ^(*)	L2 ^(*)	A	H
3000Lb						
	6	1/8	6.4	6.7	21	22
	8	1/4	8.1	10.2	25	25
	10	3/8	9.1	10.4	28	33
	15	1/2	10.9	13.6	33	38
	20	3/4	12.7	13.9	38	46
	25	1	14.7	17.3	44	56
	32	1-1/4	17	18	51	62
	40	1-1/2	17.8	18.4	60	75
	50	2	19	19.2	64	84
	65	2-1/2	23.6	28.9	83	102
	80	3	25.9	30.5	95	121
	100	4	27.7	33	114	152

ORDER ITEM	DN	Nom Pipe Size	B ⁽²⁾ (Avg)	B ⁽²⁾ (Min)	C ⁽¹⁾ (Avg)	C ⁽¹⁾ (Min)	D ⁽²⁾	A ⁽²⁾	j (Min)
9000Lb									
	15	1/2	21.8	9.35	8.18	6.4	25.5	9.5	
	20	3/4	27.2	9.78	8.56	11.1	28.5	12.5	
	25	1	33.9	11.38	9.96	15.2	32	12.5	
	32	1-1/4	42.7	12.14	10.62	22.8	35	12.5	
	40	1-1/2	48.8	12.7	11.12	28	38	12.5	
	50	2	61.2	13.84	12.12	38.2	54	16	

ORDER ITEM	DN	Nom Pipe Size	B ^(*)	L2 ^(*)	A	H
6000Lb						
	6	1/8	6.4	6.7	25	25
	8	1/4	8.1	10.2	28	33
	10	3/8	9.1	10.4	33	38
	15	1/2	10.9	13.6	38	46
	20	3/4	12.7	13.9	44	56
	25	1	14.7	17.3	51	62
	32	1-1/4	17	18	60	75
	40	1-1/2	17.8	18.4	64	84
	50	2	19	19.2	83	102
	65	2-1/2	23.6	28.9	95	121
	80	3	25.9	30.5	106	146
	100	4	27.7	33	114	152

(1) Average of socket Wall Thickness around periphery shall be no less than listed values. The minimum values are permitted in localized areas.
 (2) Tolerance see page 14

(*) Dimension B is minimum length of perfect thread. The length of useful thread (B plus threads with fully formed roots and flat crests) shall not be less than L2 (effective length of external thread) required by American National Standard for pipe threads (ANSI/ASME B1.20.1).

info@parsregulator.com
 Parsregulator@yahoo.com

E-MAIL :

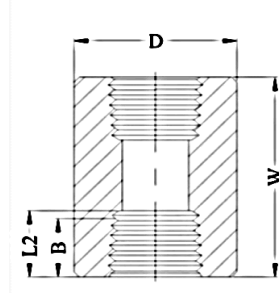
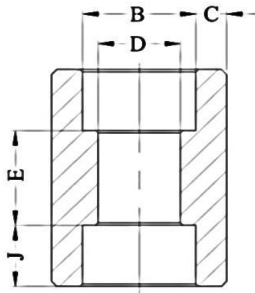
www.parsregulator.com

Tel : 88 30 77 66
 Fax: 88 83 41 40

PIPE FITTINGS

FULL COUPLING

ASME B16.11-2009(Revision of ASME B16.11-2005)



Dimensions in Millimeters.

Dimensions in Millimeters.

Socket Welding								
ORDER ITEM	DN	Nom Pipe Size	B ⁽²⁾	C ⁽¹⁾		D ⁽²⁾	E ⁽²⁾	j (Min)
				(Avg)	(Min)			
3000Lb								
	6	1/8	10.8	3.18	3.18	6.9	6.5	9.5
	8	1/4	14.2	3.78	3.3	9.3	6.5	9.5
	10	3/8	17.6	4.01	3.5	12.6	6.5	9.5
	15	1/2	21.8	4.67	4.09	15.8	9.5	9.5
	20	3/4	27.2	4.9	4.27	21	9.5	12.5
	25	1	33.9	5.69	4.98	26.7	12.5	12.5
	32	1-1/4	42.7	6.07	5.28	35.1	12.5	12.5
	40	1-1/2	48.8	6.35	5.54	40.9	12.5	12.5
	50	2	61.2	6.93	6.04	52.5	19	16
	65	2-1/2	73.9	8.76	7.67	62.7	19	16
	80	3	89.8	9.52	8.3	78	19	16
	100	4	115.2	10.69	9.35	102.3	19	19

Threaded						
ORDER ITEM	DN	Nom Pipe Size	Length of Thread (Min)		W	D
			B ^(*)	L2 ^(*)		
3000Lb						
	6	1/8	6.4	6.7	32	16
	8	1/4	8.1	10.2	35	19
	10	3/8	9.1	10.4	38	22
	15	1/2	10.9	13.6	48	28
	20	3/4	12.7	13.9	51	35
	25	1	14.7	17.3	60	44
	32	1-1/4	17	18	67	57
	40	1-1/2	17.8	18.4	79	64
	50	2	19	19.2	86	76
	65	2-1/2	23.6	28.9	92	92
	80	3	25.9	30.5	108	108
	100	4	27.7	33	121	140

PIPE FITTINGS

6000Lb								
	6	1/8	10.8	3.96	3.43	4	6.5	9.5
	8	1/4	14.2	4.6	4.01	6.4	6.5	9.5
	10	3/8	17.6	5.03	4.37	9.2	6.5	9.5
	15	1/2	21.8	5.97	5.18	11.8	9.5	9.5
	20	3/4	27.2	6.96	6.04	15.6	9.5	12.5
	25	1	33.9	7.92	6.93	20.7	12.5	12.5
	32	1-1/4	42.7	7.92	6.93	29.5	12.5	12.5
	40	1-1/2	48.8	8.92	7.8	34	12.5	12.5
	50	2	61.2	10.92	9.5	42.9	19	16

6000Lb						
	6	1/8	6.4	6.7	32	22
	8	1/4	8.1	10.2	35	25
	10	3/8	9.1	10.4	38	32
	15	1/2	10.9	13.6	48	38
	20	3/4	12.7	13.9	51	44
	25	1	14.7	17.3	60	57
	32	1-1/4	17	18	67	64
	40	1-1/2	17.8	18.4	79	76
	50	2	19	19.2	86	92
	65	2-1/2	23.6	28.9	92	108
	80	3	25.9	30.5	108	127
	100	4	27.7	33	121	159

9000Lb								
	15	1/2	21.8	9.35	8.18	6.4	9.5	9.5
	20	3/4	27.2	9.78	8.56	11.1	9.5	12.5
	25	1	33.9	11.38	9.96	15.2	12.5	12.5
	32	1-1/4	42.7	12.14	10.62	22.8	12.5	12.5
	40	1-1/2	48.8	12.7	11.12	28	12.5	12.5
	50	2	61.2	13.84	12.12	38.2	19	16

- (1) Average of socket Wall Thickness around periphery shall be no less than listed values. The minimum values are permitted in localized areas.
- (2) Tolerance see page 14
- (3) Reducer: "C, J, E" in accordance with large size.
"D" in accordance with small size.
The others in accordance with each size.

(*) Dimension B is minimum length of perfect thread. The length of useful thread (B plus threads with fully formed roots and flat crests) shall not be less than L2 (effective length of external thread) required by American National Standard for pipe threads (ANSI/ ASME B1.20.1).

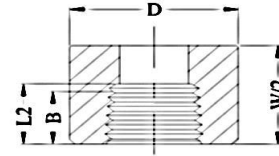
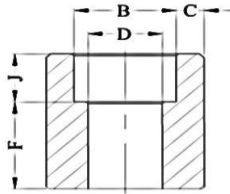
info@parsregulator.com
Parsregulator@yahoo.com

www.parsregulator.com

Tel : 88 30 77 66
Fax: 88 83 41 40

HALF COUPLING

ASME B16.11-2009(Revision of ASME B16.11-2005)



Dimensions in Millimeters.

ORDER ITEM	DN	Nom Pipe Size	B ⁽²⁾		C ⁽¹⁾		D ⁽²⁾	F ⁽²⁾	j (Min)
			Avg	Min	Avg	Min			
3000Lb									
	6	1/8	10.8	3.18	3.18	6.9	16	9.5	
	8	1/4	14.2	3.78	3.30	9.3	16	9.5	
	10	3/8	17.6	4.01	3.50	12.6	17.5	9.5	
	15	1/2	21.8	4.67	4.09	15.8	22.5	9.5	
	20	3/4	27.2	4.90	4.27	21.0	24.0	12.5	
	25	1	33.9	5.69	4.98	26.7	28.5	12.5	
	32	1-1/4	42.7	6.07	5.28	35.1	30.0	12.5	
	40	1-1/2	48.8	6.35	5.54	40.9	32.0	12.5	
	50	2	61.2	6.93	6.04	52.5	41.0	16.0	
	65	2-1/2	73.9	8.76	7.67	62.7	43.0	16.0	
	80	3	89.8	9.52	8.30	78.0	44.5	16.0	
	100	4	115.2	10.69	9.35	102.3	48.0	19.0	

Dimensions in Millimeters.

ORDER ITEM	DN	Nom Pipe Size	Length of Thread (Min)		W	D
			B ^(*)	L2 ^(*)		
3000Lb						
	6	1/8	6.4	6.7	32	16
	8	1/4	8.1	10.2	35	19
	10	3/8	9.1	10.4	38	22
	15	1/2	10.9	13.6	48	28
	20	3/4	12.7	13.9	51	35
	25	1	14.7	17.3	60	44
	32	1-1/4	17.0	18.0	67	57
	40	1-1/2	17.8	18.4	79	64
	50	2	19.0	19.2	86	76
	65	2-1/2	23.6	28.9	92	92
	80	3	25.9	30.5	108	108
	100	4	27.7	33.0	121	140

6000Lb

	6	1/8	10.8	3.96	3.43	4.0	16.0	9.5
	8	1/4	14.2	4.60	4.01	6.4	16.0	9.5
	10	3/8	17.6	5.03	4.37	9.2	17.5	9.5
	15	1/2	21.8	5.97	5.18	11.8	22.5	9.5
	20	3/4	27.2	6.96	6.04	15.6	24.0	12.5
	25	1	33.9	7.92	6.93	20.7	28.5	12.5
	32	1-1/4	42.7	7.92	6.93	29.5	30.0	12.5
	40	1-1/2	48.8	8.92	7.80	34.0	32.0	12.5
	50	2	61.2	10.92	9.50	42.9	41.0	16.0

6000Lb

	6	1/8	6.4	6.7	32	22
	8	1/4	8.1	10.2	35	25
	10	3/8	9.1	10.4	38	32
	15	1/2	10.9	13.6	48	38
	20	3/4	12.7	13.9	51	44
	25	1	14.7	17.3	60	57
	32	1-1/4	17.0	18.0	67	64
	40	1-1/2	17.8	18.4	79	76
	50	2	19.0	19.2	86	92
	65	2-1/2	23.6	28.9	92	108
	80	3	25.9	30.5	108	127
	100	4	27.7	33	121	159

9000Lb

	15	1/2	21.8	9.35	8.18	6.4	22.5	9.5
	20	3/4	27.2	9.78	8.56	11.1	24.0	12.5
	25	1	33.9	11.38	9.96	15.2	28.5	12.5
	32	1-1/4	42.7	12.14	10.62	22.8	30.0	12.5
	40	1-1/2	48.8	12.70	11.12	28.0	32.0	12.5
	50	2	61.2	13.84	12.12	38.2	41.0	16.0

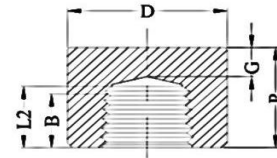
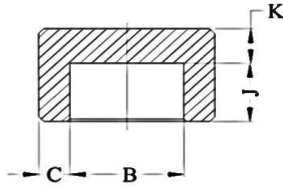
(1) Average of socket Wall Thickness around periphery shall be no less than listed values. The minimum values are permitted in localized areas.

(2) Tolerance see page 14

(*) Dimension B is minimum length of perfect thread. The length of useful thread (B plus threads with fully formed roots and flat crests) shall not be less than L2 (effective length of external thread) required by American National Standard for pipe threads (ANSI/ ASME B1.20.1).

CAP

ASME B16.11-2009(Revision of ASME B16.11-2005)



Dimensions in Millimeters.

Socket Welding							
ORDER ITEM	DN	Nom Pipe Size	B ⁽²⁾	C ⁽¹⁾		K (Min)	j (Min)
				(Avg)	(Min)		
3000Lb							
	6	1/8	10.8	3.18	3.18	4.8	9.5
	8	1/4	14.2	3.78	3.30	4.8	9.5
	10	3/8	17.6	4.01	3.50	4.8	9.5
	15	1/2	21.8	4.67	4.09	6.4	9.5
	20	3/4	27.2	4.90	4.27	6.4	12.5
	25	1	33.9	5.69	4.98	9.6	12.5
	32	1-1/4	42.7	6.07	5.28	9.6	12.5
	40	1-1/2	48.8	6.35	5.54	11.2	12.5
	50	2	61.2	6.93	6.04	12.7	16.0
	65	2-1/2	73.9	8.76	7.67	15.7	16.0
	80	3	89.8	9.52	8.30	19.0	16.0
	100	4	115.2	10.69	9.35	22.4	19.0

Dimensions in Millimeters.

Threaded							
ORDER ITEM	DN	Nom Pipe Size	Length of Thread (Min)		P	D	G (Min)
			B ^(*)	L2 ^(*)			
3000Lb							
	6	1/8	6.4	6.7	19	16	4.8
	8	1/4	8.1	10.2	25	19	4.8
	10	3/8	9.1	10.4	25	22	4.8
	15	1/2	10.9	13.6	32	28	6.4
	20	3/4	12.7	13.9	37	35	6.4
	25	1	14.7	17.3	41	44	9.7
	32	1-1/4	17.0	18.0	44	57	9.7
	40	1-1/2	17.8	18.4	44	64	11.2
	50	2	19.0	19.2	48	76	12.7
	65	2-1/2	23.6	28.9	60	92	15.7
	80	3	25.9	30.5	65	108	19.0
	100	4	27.7	33.0	68	140	22.4

PIPE FITTINGS

6000Lb

	6	1/8	10.8	3.96	3.43	6.4	9.5
	8	1/4	14.2	4.60	4.01	6.4	9.5
	10	3/8	17.6	5.03	4.37	6.4	9.5
	15	1/2	21.8	5.97	5.18	7.9	9.5
	20	3/4	27.2	6.96	6.04	7.9	12.5
	25	1	33.9	7.92	6.93	11.2	12.5
	32	1-1/4	42.7	7.92	6.93	11.2	12.5
	40	1-1/2	48.8	8.92	7.80	12.7	12.5
	50	2	61.2	10.92	9.50	15.7	16.0

6000Lb

	8	1/4	8.1	10.2	27	25	6.4
	10	3/8	9.1	10.4	27	32	6.4
	15	1/2	10.9	13.6	33	38	7.9
	20	3/4	12.7	13.9	38	44	7.9
	25	1	14.7	17.3	43	57	11.2
	32	1-1/4	17.0	18.0	46	64	11.2
	40	1-1/2	17.8	18.4	48	76	12.7
	50	2	19.0	19.2	51	92	15.7
	65	2-1/2	23.6	28.9	64	108	19.0
	80	3	25.9	30.5	68	127	22.4
	100	4	27.7	33.0	75	159	28.4

9000Lb

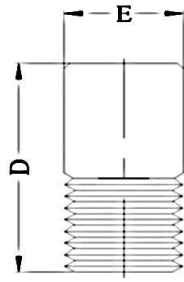
	15	1/2	21.8	9.35	8.18	11.2	9.5
	20	3/4	27.2	9.78	8.56	12.7	12.5
	25	1	33.9	11.38	9.96	14.2	12.5
	32	1-1/4	42.7	12.14	10.62	14.2	12.5
	40	1-1/2	48.8	12.70	11.12	15.7	12.5
	50	2	61.2	13.84	12.12	19.0	16.0

(1) Average of socket Wall Thickness around periphery shall be no less than listed values. The minimum values are permitted in localized areas.
 (2) Tolerance see page 14

(*) Dimension B is minimum length of perfect thread. The length of useful thread (B plus threads with fully formed roots and flat crests) shall not be less than L2 (effective length of external thread) required by American National Standard for pipe threads (ANSI/ ASME B1.20.1).

ROUND HEAD PLUG

ASME B16.11-2009(Revision of ASME B16.11-2005)



Dimensions in Millimeters.

Round Head Plug				
ORDER ITEM	DN	Nom Pipe Size	E (NOM.)	D (NOM.)
	6	1/8	10	35
	8	1/4	14	41
	10	3/8	18	41
	15	1/2	21	44
	20	3/4	27	44
	25	1	33	51
	32	1-1/4	43	51
	40	1-1/2	48	51
	50	2	60	64
	65	2-1/2	73	70
	80	3	89	70
	100	4	114	76

DIMENSIONAL TOLERANCE OF ASME B16.11

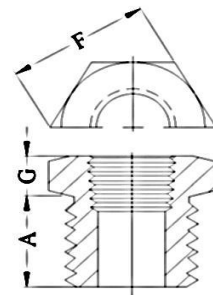
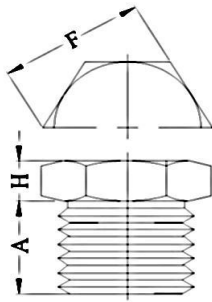
ASME B16.11-2009

Unit:m/m

Item	Type of Pipe Fitting	SIZE				
		DN	6 TO 8	10 TO 20	25 TO 50	65 TO 100
		NPS	1/8to1/4	3/8to3/4	1to2	2-1/2to4
Bore diameter of socket(B)	All type of pipe fittings	+0.4 -0	+0.4 -0	+0.4 -0	+0.5 -0	
Bore diameter of fitting(D)		±0.7	±0.7	±0.7	±1.4	
Concentricity of bore(X)		±0.8				
Coincidence of axes(Y)		1/200 Max				
Center to bottom of socket(A)	45° 90° Elbow Tee Cross	±1.0	±1.5	±2.0	±2.5	
Bottom to bottom of socket(E)	Full Coupling	±1.5	±3.0	±4.0	±5.0	
Bottom to socket to opposite face(F)	Half Coupling	±1.0	±1.5	±2.0	±2.5	

HEX HEAD PLUG & BUSHING

ASME B16.11-2009(Revision of ASME B16.11-2005)



Dimensions in Millimeters.

Hex Head Plug					
ORDER ITEM	DN	Nom. Pipe Size	A (Min)	F (Nom.)	H (Min)
	6	1/8	10	11	6
	8	1/4	11	16	6
	10	3/8	13	18	8
	15	1/2	14	22	8
	20	3/4	16	27	10
	25	1	19	36	10
	32	1-1/4	21	46	14
	40	1-1/2	21	50	16
	50	2	22	65	18
	65	2-1/2	27	75	19
	80	3	28	90	21
	100	4	32	115	25

Dimensions in Millimeters.

Hex Head Bushing					
ORDER ITEM	DN	Nom. Pipe Size	A (Min)	F (Nom.)	G (Min)
	8	1/4	11	16	3
	10	3/8	13	18	4
	15	1/2	14	22	5
	20	3/4	16	27	6
	25	1	19	36	6
	32	1-1/4	21	46	7
	40	1-1/2	21	50	8
	50	2	22	65	9
	65	2-1/2	27	75	10
	80	3	28	90	10
	100	4	32	115	13

(1) CAUTIONARY NOTE REGARDING HEX BUSHINGS.
hex head bushing of one-size reduction should not be used in service where they might be subject harmful loads and forces ther than internal pressures.

info@parsregulator.com
parsregulator@yahoo.com

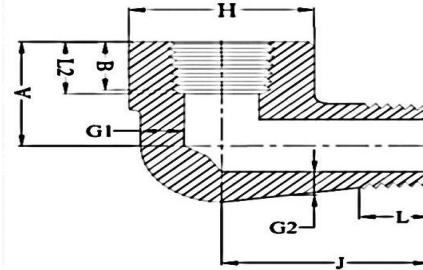
www.parsregulator.com

Tel : 88 30 77 66
Fax: 88 83 41 40

P I P E
F I T T I N G S

STREET ELBOW

ASME B16.11-2009(Revision of ASME B16.11-2005)



Dimensions in Millimeters.

ORDER ITEM	DN	Nom. Pipe Size	H	A	J	G1 (Min)	G2 ⁽¹⁾ (Min)	B ⁽²⁾ (Min)	L2 ⁽²⁾ (Min)	L (Min)
------------	----	----------------	---	---	---	----------	-------------------------	------------------------	-------------------------	---------

3000Lb

	6	1/8	19	19	25	3.18	2.74	6.4	6.7	10.0
	8	1/4	25	22	32	3.30	3.22	8.1	10.2	11.0
	10	3/8	32	25	38	3.51	3.50	9.1	10.4	13.0
	15	1/2	38	28	41	4.09	4.16	10.9	13.6	14.0
	20	3/4	44	35	48	4.32	4.88	12.7	13.9	16.0
	25	1	51	44	57	4.98	5.56	14.7	17.3	19.0
	32	1-1/4	62	51	66	5.28	5.56	17.0	18.0	21.0
	40	1-1/2	70	54	71	5.56	6.25	17.8	18.4	21.0
	50	2	84	64	84	7.14	7.64	19.0	19.0	22.0

6000Lb

	6	1/8	25	22	32	5.08	4.22	6.4	6.7	10.0
	8	1/4	32	25	38	5.66	5.28	8.1	10.2	11.0
	10	3/8	38	28	41	6.98	5.59	9.1	10.4	13.0
	15	1/2	44	35	48	8.15	6.53	10.9	13.6	14.0
	20	3/4	51	44	57	8.53	6.86	12.7	13.9	16.0
	25	1	62	51	66	9.93	7.95	14.7	17.3	19.0
	32	1-1/4	70	54	71	10.59	8.48	17.0	18.0	21.0
	40	1-1/2	84	64	84	11.07	8.89	17.8	18.4	21.0
	50	2	102	83	105	12.09	9.70	19.0	19.0	22.0

(1) Wall thickness before threading.

(2) Dimension B is minimum length of perfect thread. The length of useful thread (B plus threads with fully formed roots and fl at crests) shall not be less than L2 (effective length of external thread) required by American National Standard for pipe threads (ANSI/ASME B1.20.1)

info@parsregulator.com
E-MAIL : parsregulator@yahoo.com

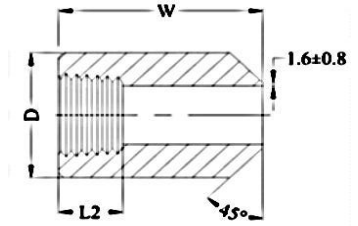
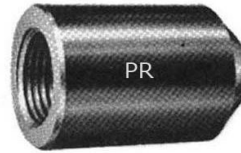
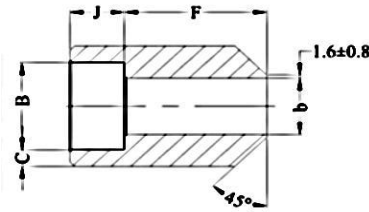
www.parsregulator.com

Tel : 88 30 77 66
Fax: 88 83 41 40

P I P E
F I T T I N G S

BOSS

BS3799-1974



Dimensions in Millimeters.

Socket Weld							
ORDER ITEM	Nom. Pipe Size	DN	B (Min)	b	j (Min)	F	C (Min)

3000Lb							
	1/8	6	10.7	6.8	10.0	28.0	3.2
	1/4	8	14.1	9.2	10.0	32.0	3.3
	3/8	10	17.6	12.5	11.0	34.0	3.5
	1/2	15	21.8	15.5	13.0	38.0	4.1
	3/4	20	27.4	21.0	13.0	38.0	4.3
	1	25	34.1	26.5	16.0	35.0	5.0
	1-1/2	40	49.0	40.5	19.0	32.0	5.6
	2	50	61.0	52.0	22.0	29.0	6.1
	2-1/2	65	73.8	62.0	22.0	29.0	7.7
	3	80	89.0	78.0	22.0	29.0	8.3

Dimensions in Millimeters.

Threaded					
ORDER ITEM	Nom. Pipe Size	DN	D	W	L2 (Min)

3000Lb					
	1/8	6	16.0	38.0	6.70
	1/4	8	19.0	41.0	10.21
	3/8	10	22.0	45.0	10.36
	1/2	15	29.0	51.0	13.56
	3/4	20	35.0	51.0	13.86
	1	25	45.0	51.0	17.34
	1-1/2	40	64.0	51.0	18.38
	2	50	76.0	51.0	19.22
	2-1/2	65	95.0	51.0	28.89
	3	80	110.0	57.0	30.48
	4	100	140.0	64.0	33.02

PIPE FITTINGS

6000Lb							
	1/2	15	21.8	11.8	13.0	38.0	5.2
	3/4	20	27.4	15.5	13.0	38.0	6.1
	1	25	34.1	20.7	16.0	35.0	7.0
	1-1/2	40	49.0	34.0	19.0	32.0	7.8
	2	50	61.0	43.0	22.0	29.0	9.5
	2-1/2	65	73.8	54.0	22.0	29.0	10.4
	3	80	89.7	66.0	22.0	29.0	12.2

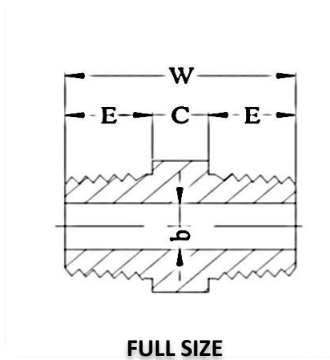
6000Lb					
	1/8	6	22.0	38.0	6.70
	1/4	8	26.0	41.0	10.21
	3/8	10	32.0	45.0	10.36
	1/2	15	38.0	51.0	13.56
	3/4	20	45.0	51.0	13.86
	1	25	60.0	51.0	17.34
	1-1/2	32	76.0	51.0	18.38
	2	40	95.0	51.0	19.22

DIMENSIONAL TOLERANCE OF BS3799

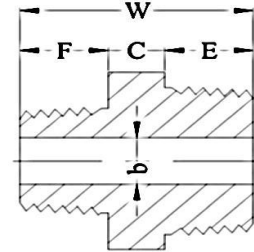
Item	Type of pipe fitting	unit:m/m				
		DN	6~8	10~20	25~50	65~80
Concentricity of bore (X)	All fittings	NPS	1/8"~1/4"	3/8"~3/4"	1"~2"	2-1/2"~3"
Coincidence of axes (Y)		±0.8				
Bore diameter of fitting (b)	Boss & Hex Nipple	±0.4				±0.8
Bottom of socket to opposite face	Boss	±0.8	±1.5	±2.0	±2.5	

HEX NIPPLE

BS3799-1974



FULL SIZE



REDUCING SIZE

Dimensions in Millimeters.

ORDER ITEM	Nominal Size				A (Min)	W (Min)	E (Min)	b ⁽¹⁾		C (Min)	F (Min)
	Equal		Reducing					3M ⁽²⁾	6M ⁽²⁾		
	In	DN	In	DN							
	1/8	(6)	-	-	11	26	10	5	2	6	-
	1/4	(8)	-	-	15	36	15	8	6	6	-
	-	-	1/4 * 1/8	(8 * 6)	15	31	15	5	2	6	10
	3/8	(10)	-	-	18	40	16	11	8	8	-
	-	-	3/8 * 1/4	(10 * 8)	18	39	16	8	6	8	15
	1/2	(15)	-	-	22	48	20	14	11	8	-
	-	-	1/2 * 3/8	(15 * 10)	22	44	20	11	8	8	16
	-	-	1/2 * 1/4	(15 * 8)	22	43	20	8	6	8	15
	3/4	(20)	-	-	27	52	21	19	13	10	-
	-	-	3/4 * 1/2	(20 * 15)	27	50	21	14	11	9	20
	-	-	3/4 * 3/8	(20 * 10)	27	46	21	11	8	9	16
	1	(25)	-	-	35	60	25	24	17	10	-
	-	-	1 * 3/4	(25 * 20)	35	56	25	19	13	10	21
	-	-	1 * 1/2	(25 * 15)	35	55	25	14	11	10	20
	1-1/2	(40)	-	-	50	68	26	38	30	16	-
	-	-	1-1/2 * 1	(40 * 25)	50	67	26	24	17	16	25
	-	-	1-1/2 * 3/4	(40 * 20)	50	63	26	19	13	16	21
	-	-	1-1/2 * 1/2	(40 * 15)	50	62	26	14	11	16	20
	2	(50)	-	-	62	71	27	49	39	17	-
	-	-	2 * 1-1/2	(50 * 40)	62	70	27	38	30	17	26
	-	-	2 * 1	(50 * 25)	62	70	27	24	17	18	25
	-	-	2 * 3/4	(50 * 20)	62	65	27	19	13	17	21
	-	-	2 * 1/2	(50 * 15)	62	65	27	14	11	18	20

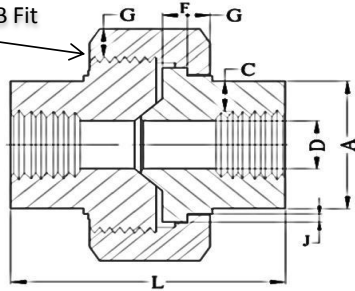
(1) Tolerance See page 17.

(2) 3M & 6M Symbols denote 3000 & 6000 classes.

THREADED END UNION

MSS SP-83-2006

H-Thrd's
Minimum 4 Full Thrd's
Engagement Class 2A/2B Fit
ANSI B1.1



3000#

Dimensions in Millimeters.

ORDER ITEM	Nom. Pipe Size	Pipe End (Min) A	Wall (Min) C	Water Way Bore D ⁽¹⁾	Male Flange (Min) F	Nut (Min) G	Nut (Min) H	Thrds.Per 25.4mm J	Bearing (Min) L	Leangth Assem. Nom. N
	1/8	14.7	2.41	8.43 6.43	3.18	3.18	16	1.24	41.4	50.8
	1/4	19.0	3.02	11.13 9.45	3.18	3.18	16	1.24	41.4	50.8
	3/8	22.9	3.20	14.27 13.51	3.43	3.43	14	1.37	46.0	55.9
	1/2	27.7	3.73	17.86 17.07	3.68	3.68	14	1.50	49.0	58.4
	3/4	33.5	3.91	23.01 21.39	4.06	4.06	11	1.68	56.9	66.0
	1	41.4	4.55	28.98 27.74	4.57	4.45	11	1.85	62.0	78.7
	1-1/4	50.5	4.85	37.69 35.36	5.33	5.21	10	2.13	71.1	94.0
	1-1/2	57.2	5.08	43.54 41.20	5.84	5.59	10	2.31	76.5	111.8
	2	70.1	5.54	55.58 52.12	6.60	6.35	10	2.69	86.1	132.1
	2-1/2	85.3	7.01	66.27 64.31	7.49	7.11	8	3.07	102.4	149.9
	3	102.4	7.62	88.25 77.27	8.26	8.00	8	3.53	109.0	175.3

(1) Upper and lower values for each size are the respective maximum and minimum dimensions.

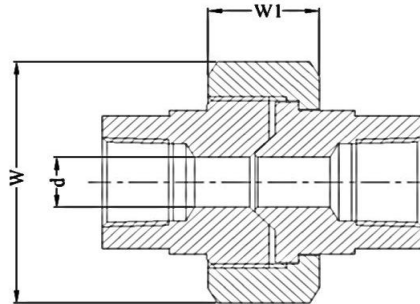
info@parsregulator.com
parsregulator@yahoo.com

www.parsregulator.com

Tel : 88 30 77 66
Fax: 88 83 41 40

PIPE FITTINGS

THREADED END UNION



6000#

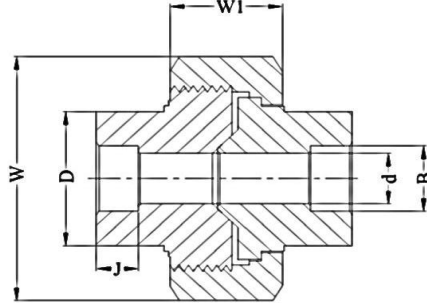
Dimensions in Milimeters.

ORDER ITEM	Nom. Pipe Size	d	W	W1
	1/4	6.4	43	22.5
	3/8	9.2	57.5	25.5
	1/2	11.8	61.2	29.5
	3/4	15.6	72.0	34.5
	1	20.7	86.5	39.0
	1-1/4	29.5	96.0	40.0
	1-1/2	34.0	111.0	45.0
	2	42.9	134.0	54.0
	2-1/2	53.8	149.1	59.0

(1) Upper and lower values for each size are the respective maximum and minimum dimensions.

SOCKET WELD UNION

MSS SP-83-2006



6000#

Dimensions in Millimeters.

ORDER ITEM	Nom. Pipe Size	B	d	D	W	W1	J
	1/4	14.3	6.4	25.0	43.0	22.5	10.5
	3/8	17.7	9.2	32.0	57.5	25.5	10.5
	1/2	21.9	11.8	38.0	61.2	29.5	12.5
	3/4	27.3	15.6	44.0	72.0	34.5	14.0
	1	34.0	20.7	57.0	86.5	39.0	15.0
	1-1/4	42.8	29.5	64.0	96.0	40.0	17.0
	1-1/2	48.9	34.0	76.0	111.0	45.0	17.5
	2	61.4	42.9	92.0	134.0	54.0	22.0
	2-1/2	74.1	53.8	111.2	149.1	59.0	22.0

(1) Upper and lower values for each size are the respective maximum and minimum dimensions.

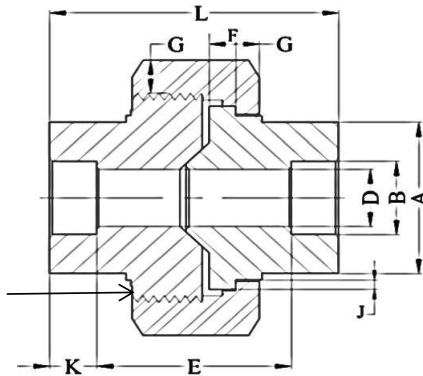
info@parsregulator.com
E-MAIL : parsregulator@yahoo.com

www.parsregulator.com

Tel : 88 30 77 66
Fax: 88 83 41 40

SOCKET WELD END UNION

MSS SP-83-2006



H-Thrd's
Minimum 4 Full Thrd's
Engagement Class 2A/2B
Fit ANSI B1.1

3000#

Dimensions in Millimeters.

ORDER ITEM	Nom. Pipe Size	Pipe End (Min) A	Socket Bore Dia. B ⁽¹⁾	Socket Wall (Min) C	Water Way Bore D ⁽¹⁾	Laying Length E ⁽¹⁾	Male Flange (Min) F	Nut (Min) G	Thrds. Per 25.4mm H	Bearing (Min) j	Depth of Socket (Min) k	Leangth Assem. Nom. L
	1/8	21.8	11.18 10.67	3.18	7.59 6.07	22.4 19.1	3.18	3.18	16	1.24	9.7	41.4
	1/4	21.8	14.61 14.10	3.30	10.01 8.48	22.4 19.1	3.18	3.18	16	1.24	9.7	41.4
	3/8	25.9	18.03 17.53	3.51	13.28 11.76	26.9 20.6	3.43	3.43	14	1.37	9.7	46.0
	1/2	31.2	22.23 21.72	4.09	16.56 15.04	26.9 20.6	3.68	3.68	14	1.50	9.7	49.0
	3/4	37.1	27.56 27.05	4.27	21.69 20.17	31.8 25.4	4.06	4.06	11	1.68	12.7	56.9
	1	45.5	34.29 33.78	4.98	27.41 25.88	34.3 26.2	4.57	4.45	11	1.85	12.7	62.0
	1-1/4	54.9	43.05 42.55	5.28	35.81 34.29	40.6 32.5	5.33	5.21	10	2.13	12.7	71.1
	1-1/2	61.5	49.15 48.64	5.54	41.66 40.13	42.2 34.0	5.84	5.59	10	2.31	12.7	76.5
	2	75.2	61.62 61.11	6.05	53.26 51.74	45.5 37.3	6.60	6.35	10	2.69	15.7	86.1
	2-1/2	91.7	74.45 73.81	7.67	64.24 61.19	61.7 52.1	7.49	7.11	8	3.07	15.7	102.4
	3	109.2	90.42 89.79	8.31	79.45 76.40	63.8 53.6	8.26	8.00	8	3.53	15.7	109.0

(1) Upper and lower values for each size are the respective maximum and minimum dimensions.

info@parsregulator.com
parsregulator@yahoo.com

E-MAIL :

www.parsregulator.com

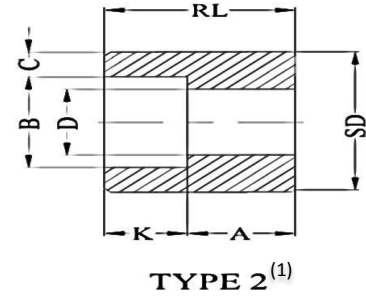
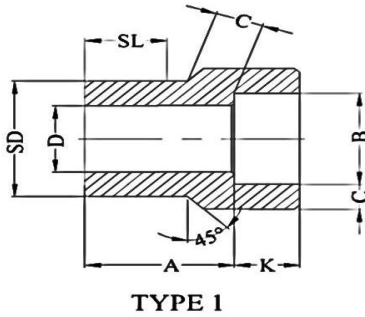
Tel : 88 30 77 66

Fax: 88 83 41 40

PIPE FITTINGS

REDUCER INSERT

MSS SP-79-2004



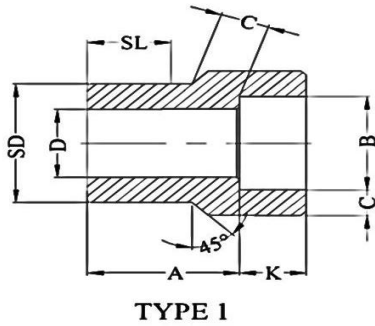
Dimensions in Millimeters.

ORDER ITEM	Nom. Pipe Size	Type ⁽²⁾		SOCKET		Shank DIA SD	Laying Length A		Bore D		Wall (Min) C		Length			
		3M	6M	Dia. B	Depth (Min) k		3M	6M	3M	6M	3M	6M	SL		RL(Min)	
													3M	6M	3M	6M
	3/8 X 1/4	1	1	14.35	10	17.15	19	21	9.0	6.5	3.78	4.60	14	16	-	-
	1/2 X 3/8	1	1	17.78	10	21.34	21	23	12.5	9.0	4.01	5.03	16	16	-	-
	1/2X1/4	1	1	14.35	10	21.34	21	21	9.0	6.5	3.78	4.60	16	16	-	-
	3/4X1/2	1	1	21.97	10	26.67	22	25	16.0	12.0	4.67	5.97	17	19	-	-
	3/4X3/8	2	1	17.78	10	26.67	16	22	12.5	9.0	4.01	5.03	-	19	27	-
	3/4X1/4	2	2	14.35	10	26.67	18	22	9.0	6.5	3.78	4.60	-	-	27	32
	1X3/4	1	1	27.31	13	33.40	24	28	21.0	15.5	4.90	6.96	19	21	-	-
	1X1/2	2	1	21.97	10	33.40	16	28	16.0	12.0	4.67	5.97	-	21	28	-
	1X3/8	2	2	17.78	10	33.40	18	22	12.5	9.0	4.01	5.03	-	-	28	33
	1X1/4	2	2	14.35	10	33.40	19	24	9.0	6.5	3.78	4.60	-	-	28	33
	1-1/4X1	1	1	34.04	13	42.16	25	30	26.5	20.5	5.69	7.92	21	22	-	-
	1-1/4X3/4	2	2	27.31	13	42.16	18	21	21.0	15.5	4.90	6.69	-	-	32	35
	1-1/4X1/2	2	2	21.97	10	42.16	19	22	16.0	12.0	4.67	5.97	-	-	32	35
	1-1/4X3/8	2	2	17.78	10	42.16	21	24	12.5	9.0	4.01	5.03	-	-	32	35
	1-1/4X1/4	2	2	14.35	10	42.16	22	25	9.0	6.5	3.78	4.60	-	-	32	35
	1-1/2X1-1/4	1	1	42.80	13	48.26	28	35	35.0	29.5	6.07	7.92	22	25	-	-
	1-1/2X1	2	1	34.04	13	48.26	18	29	26.5	20.5	5.69	7.92	-	25	33	-
	1-1/2X3/4	2	2	27.31	13	48.26	19	25	21.0	15.5	4.90	6.96	-	-	33	40
	1-1/2X1/2	2	2	21.97	10	48.26	21	27	16.0	12.0	4.67	5.97	-	-	33	40
	1-1/2X3/8	2	2	17.78	10	48.26	22	28	12.5	9.0	4.01	5.03	-	-	33	40
	2X1-1/2	1	1	48.90	13	60.33	32	39	41.0	34.0	6.35	8.92	25	28	-	-
	2X1-1/4	2	2	42.80	13	60.33	21	24	35.0	29.5	6.07	7.92	-	-	38	41
	2X1	2	2	34.04	13	60.33	22	25	26.5	21.0	5.69	7.92	-	-	38	41
	2X3/4	2	2	27.31	13	60.33	24	27	21.0	15.5	4.90	6.96	-	-	38	41
	2X1/2	2	2	21.97	10	60.33	25	28	16.0	12.0	4.67	5.97	-	-	38	41
	2-1/2X2	1	1	61.37	16	73.02	46	43	52.5	43.0	6.93	10.92	32	38	-	-

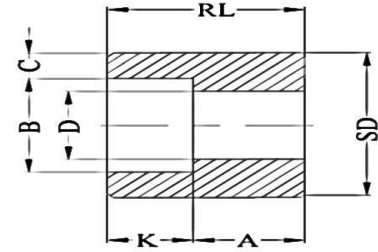
(1) AT the option of the manufacturer Type 2 Reducers may be furnished Type 1 configuration
 (2) 3M & 6M symbols denote 3000 and 6000 classes

REDUCER INSERT

MSS SP-79-2004



TYPE 1



TYPE 2 ⁽¹⁾

(Continued)

Dimensions in Millimeters.

ORDER ITEM	Nom. Pipe Size	Type ⁽²⁾		SOCKET		Shank DIA SD	Laying Length A		Bore D		Wall (Min) C		Length			
		3M	6M	Dia. B	Depth (Min) k		3M	6M	3M	6M	3M	6M	SL		RL(Min)	
													3M	6M	3M	6M
	2-1/2X1-1/2	2	2	48.90	13	73.02	35	35	41.0	34.0	6.35	8.92	-	-	54	54
	2-1/2X1-1/4	2	2	42.80	13	73.02	37	37	35.0	29.5	6.07	7.92	-	-	54	54
	2-1/2X1	2	2	34.04	13	73.02	38	38	26.5	20.5	5.69	7.92	-	-	54	54
	2-1/2X3/4	2	2	27.31	13	73.02	40	38	21.0	15.5	4.90	6.96	-	-	54	54
	3X2-1/2	1	1	74.07	16	88.90	38	57	62.5	54.0	8.76	11.91	32	44	-	-
	3X2	2	2	61.37	16	88.90	25	32	52.5	43.0	6.93	10.92	-	-	48	54
	3X1-1/2	2	2	48.90	13	88.90	28	32	41.0	34.0	6.35	8.92	-	-	48	54
	3X1-1/4	2	2	42.80	13	88.90	30	32	35.0	29.5	6.07	7.92	-	-	48	54
	3X1	2	2	34.04	13	88.90	32	32	26.5	20.5	5.69	7.92	-	-	48	54
	4X3	2	-	90.04	16	114.30	33	-	78.0	-	9.5	-	-	-	60	-
	4X2-1/2	2	-	74.07	16	114.30	38	-	62.5	-	8.76	-	-	-	60	-
	4X2	2	-	61.37	16	114.30	38	-	52.5	-	6.93	-	-	-	60	-
	4X1-1/2	2	-	48.90	13	114.30	42	-	41.0	-	6.35	-	-	-	60	-
	4X1-1/4	2	-	42.80	13	114.30	43	-	35.0	-	6.07	-	-	-	60	-

(1) AT the option of the manufacturer Type 2 Reducers may be furnished Type 1 configuration

(2) 3M & 6M symbols denote 3000 and 6000 classes

DIMENSIONAL TOLERANCES OF REDUCER INSERT

MSS SP-79-2004

Unit: m/m

	1/4	3/8	1/2	3/4	1	1-1/4	1-1/2	2	2-1/2	3	4
Laying Length (A)	X	+1.5 -0		+2.0 -0				+2.5 -0			
Socket Dia (B)	±0.25								+0.4 -0.25		X
Bore (D)	±0.8								± 1.5		X
Shank Dia (SD)	X	±0.25						±0.50		±0.75	
Shank Length (SL)	X	+0 -1.5		+0 -2.0				+0 -2.5			

E-MAIL : info@parsregulator.com
Parsregulator@yahoo.com

www.parsregulator.com

Tel : 88 30 77 66
Fax: 88 83 41 40

P I P E
F I T T I N G S

SWAGED NIPPLE

MSS SP-95-2006



PBE

TBE

BBE

PBE

TBE

BBE

CONCENTRIC

ECCENTRIC

Dimensions in Millimeters.

ORDER ITEM	Nom. Pipe Size	Outside Diameter		END TO END "A"	Wall Thickness					
		Large End D1	Small End D2		T1			T2		
					Screwed/ Plain 3000 Sch80(XS)	Plain 6000 Sch160	Screwed 6000 XXS	Screwed/ Plain 3000 Sch80(XS)	Plain 6000 Sch160	Screwed 6000 XXS
	3/8 x 1/4	17.1	13.7	64	3.2	4.0	6.4	3.0	-	-
	1/2 x 1/4	21.3	13.7	70	3.7	4.8	7.5	3.0	-	-
	1/2 x 3/8	21.3	17.1	70	3.7	4.8	7.5	3.2	-	-
	3/4 x 3/8	26.7	17.1	76	3.9	5.6	7.8	3.2	-	-
	3/4 x 1/2	26.7	21.3	76	3.9	5.6	7.8	3.7	4.8	7.5
	1 x 1/2	33.4	21.3	89	4.5	6.4	9.1	3.7	4.8	7.5
	1 x 3/4	33.4	26.7	89	4.5	6.4	9.1	3.9	5.6	7.6
	1-1/4 x 1	42.2	33.4	102	4.9	6.4	9.7	4.5	6.4	9.1
	1-1/2 x 3/4	48.3	26.7	114	5.1	7.1	10.2	3.9	5.6	7.8
	1-1/2 x 1	48.3	33.4	114	5.1	7.1	10.2	4.5	6.4	9.1
	1-1/2 x 1-1/4	48.3	42.2	114	5.1	7.1	10.2	4.9	6.4	9.7
	2 x 1	60.3	33.4	165	5.5	8.7	11.1	4.5	6.4	9.1
	2 x 1-1/4	60.3	42.2	165	5.5	8.7	11.1	4.9	6.4	9.7
	2 x 1-1/2	60.3	48.3	165	5.5	8.7	11.1	5.1	7.1	10.2
	2-1/2 x 2	73	60.3	178	7.0	9.5	14.0	5.5	8.7	11.1
	3 x 2	88.9	60.3	203	7.6	11.1	15.2	5.5	8.7	11.1
	4 x 2	114.3	60.3	229	8.6	13.5	17.1	5.5	8.7	11.1
	4 x 3	114.3	88.9	229	8.6	13.5	17.1	7.6	11.1	15.2

(1) wall Thickness (T1, T2) in Accordance with ASME B36.10M

PBE: PLAIN BOTH ENDS

BBE=BEVEL BOTH ENDS

TBE: THREAD BOTH ENDS

PSE: PLAIN SMALL END

BSE=BEVEL SMALL END

TBE: THREAD SMALL END

PLE: PLAIN LARGE END

BLE=BEVEL LARGE END

TLE: THREAD LARGE END

MSS-SP-95-2006

DIMENSIONAL TOLERANCES OF SWAGED NIPPLES

Nominal Pipe Size (inch)	Overall Length	Outside Diameter at End		Fitting Wall Thickness (see Note 1)
		Square Cut Ends	Other Cut Connections	
1/8 ~ 3/8	± 1.5	+0.4 -0.8	± 0.8	Not less than 87.5% of Nominal Wall Thickness
1/2 ~ 1-1/2	± 1.5	+0.4 -0.8	+1.5 -0.8	
2 ~ 2-1/2	± 3.0	± 0.8	+1.5 -0.8	
3 ~ 4	± 3.0	± 0.8	± 1.5	

Note 1: Prior to threading or grooving

info@parsregulator.com
Parsregulator@yahoo.com

E_MAIL :

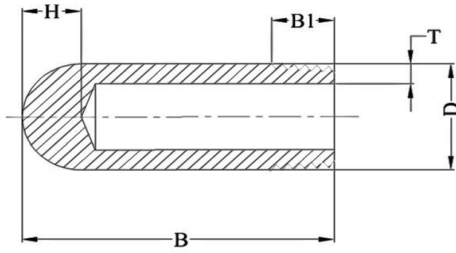
www.parsregulator.com

Tel : 88 30 77 66
Fax: 88 83 41 40

P
I
P
E
F
I
T
T
I
N
G
S

BULL PLUG

MSS SP-95-2006



Dimensions in Milimeters.

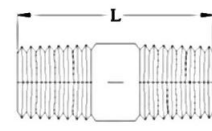
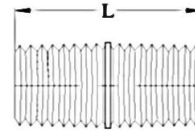
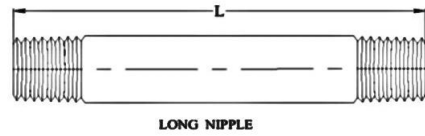
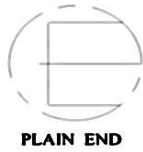
ORDER ITEM	Nom. Pipe Size	D	B	B1	T (Min)				H
					Sch 40/STD	Sch 80/XS (3M)	Sch 160 (6M)	XXS	
	1/8	10.3	51	9.5	1.73	2.41	-	-	14
	1/4	13.7	51	11.0	2.24	3.02	-	-	14
	3/8	17.1	57	12.5	2.31	3.20	-	-	14
	1/2	21.3	64	14.5	2.77	3.73	4.78	7.47	14
	3/4	26.7	70	16.0	2.87	3.91	5.56	7.82	18
	1	33.4	76	19.0	3.38	4.55	6.35	9.09	18
	1-1/4	42.2	83	20.5	3.56	4.85	6.35	9.7	18
	1-1/2	48.3	89	20.5	3.68	5.08	7.14	10.15	18
	2	60.3	102	22.0	3.91	5.54	8.74	11.07	20
	2-1/2	73.0	127	27.0	5.16	7.01	9.53	14.02	20
	3	88.9	152	28.5	5.49	7.62	11.13	15.24	20
	4	114.3	178	32.0	6.02	8.56	13.49	17.12	20

(1) Thread in Accordance with ASME B1.20.1

(2) Wall Thickness (T Min) in Accordance with ASME B36.10M

NIPPLE

ASTM A733-03

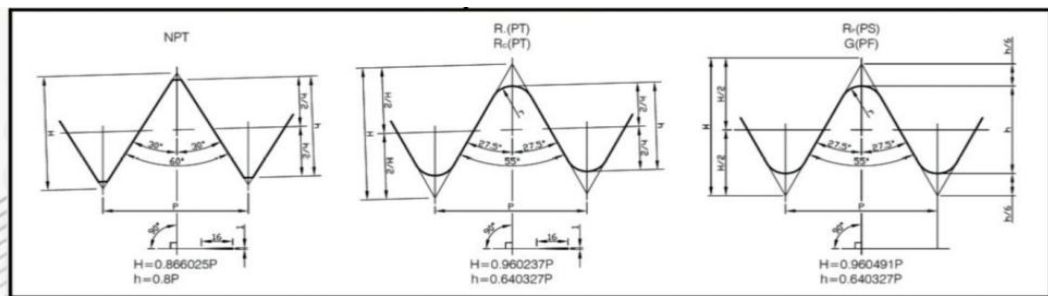


Dimensions in Millimeters.

ORDER ITEM	Nom. Pipe Size	L		
		Close Nipple	Short Nipple	Long Nipple
	1/8	3/4	1-1/2	2~12
	1/4	7/8	1-1/2	2~12
	3/8	1	1-1/2	2~12
	1/2	1-1/8	1-1/2	2~12
	3/4	1-3/8	1-1/2	2-1/2~12
	1	1-1/2	2	2-1/2~12
	1-1/4	1-5/8	2	3~12
	1-1/2	1-3/4	2	3~12
	2	2	2-1/2	3~12
	2-1/2	2-1/2	3	3-1/2~12
	3	2-5/8	3	3-1/2~12
	3-1/2	2-3/4	4	4-1/2~12
	4	2-7/8	4	4-1/2~12
	5	3	4-1/2	5~12
	6	3-1/8	4-1/2	5~12

(1) Thread in Accordance with ASME B1.20.1
(2) Weld Bevel in Accordance with ASME B16.25

Shape of Threaded



PIPE FITTINGS

NIPPLE

ASME B 1.20.1-1983

TABLE 1
VARIATIONS IN OUTSIDE DIAMETER

Permissible Variations in Outside Diameter				
NPS	Over		Under	
	In.	mm	In.	mm
1/8 to 1-1/2	1/64(0.015)	0.4	1/64(0.015)	0.4
Over 1 1/2 to 4	1/32(0.031)	0.8	1/32(0.031)	0.8
Over 4 to 6	1/16(0.062)	1.6	1/32(0.031)	0.8

TABLE 2
PERMITTED VARIATIONS IN WALL THICKNESS

NPS Designator	Tolerance% From nominal	
	Over	Under
1/8 to 2-1/2 incl .all t/D ratios	20.0	12.5
3 to 6 incl. t/D up to 5% incl	22.5	12.5
3 to 6 incl. t/D up<5%	15.0	12.5

where
T=Nominal Wall thickness
D=Ordered Outside Diameter

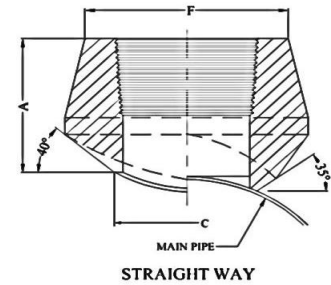
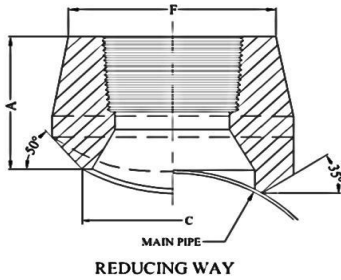
TABLE 3
PERMITTED VARIATIONS IN LENGTH

NPS Designator	Tolerance % Frome nominal
1/8 to 6	±1.6

THREADED END BRANCH OUTLET

MSS SP-97-2006

REDUCING SIZE



Dimensions in Milimeters.

Reducing way				
ORDER ITEM	Outlet Pipe (in)	A	C	F

3000Lb (XS)				
	1/8	19.0	13.7	17.3
	1/4	19.0	13.7	22.0
	3/8	21.0	17.1	25.9
	1/2	25.0	21.3	31.4
	3/4	27.0	26.7	37.1
	1	33.0	33.4	45.5
	1-1/4	33.0	42.2	57.0
	1-1/2	35.0	48.3	64.0
	2	38.0	60.3	76.0
	2-1/2	46.0	73.0	92.0
	3	51.0	88.9	109.2
	4	57.0	114.3	140.0

Dimensions in Milimeters.

Straight way				
ORDER ITEM	Outlet Pipe (in)	A	C	F

3000Lb				
	1/4	19.0	11.5	22.0
	3/8	21.0	14.5	25.0
	1/2	25.0	16.5	31.4
	3/4	27.0	21.5	37.1
	1	33.0	27.2	45.5
	1-1/4	33.0	36.0	57.0
	1-1/2	35.0	42.0	64.0
	2	38.0	53.0	76.0
	2-1/2	46.0	65.0	92.0
	3	51.0	80.0	109.0
	4	57.0	104.0	140.0

(1) Thread in Accordance with ASME B1.20.1

6000Lb (S160)				
	1/2	32.0	16.6	33.9
	3/4	37.0	21.2	41.2
	1	40.0	27.0	49.9
	1-1/4	41.0	35.8	58.6
	1-1/2	43.0	41.2	66.7
	2	52.0	51.6	83.2

(1) Thread in Accordance with ASME B1.20.1

(2) 3000LB Outlet size 4 and less fit a number of run pipe sizes and the fitting are market accordingly

See page 33 for conventional run size combination.

DIMENSIONAL TOLERANCE

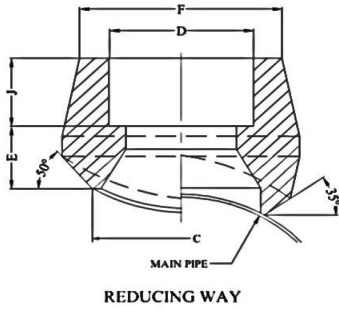
MSS SP-97-2006

Unit :m/m

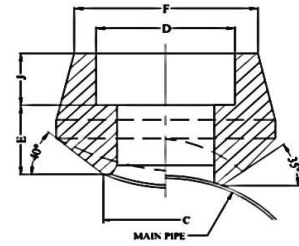
Item	1/8" ~ 3/4"	1" ~ 4"
Face of fitting to crotch(A)	+1.5 0.76	+2 -1.52

SOCKET WELDING END BRANCH OUTLET

MSS SP -97-2006
REDUCING SIZE



REDUCING WAY



STRAIGHT WAY

Dimensions in Milimeters.

Dimensions in Milimeters.

Reducing way						
ORDER ITEM	Outlet Pipe (in)	C	D	F	J (Min)	E ⁽¹⁾

3000Lb (XS)						
	1/8	13.7	10.8	22.0	9.7	10.4
	1/4	13.7	14.2	22	9.7	10.4
	3/8	19.1	17.6	25.9	9.7	12.7
	1/2	21.3	21.8	31.4	9.7	16
	3/4	26.7	27.2	37.1	12.7	16
	1	33.4	33.9	45.5	12.7	22.4
	1-1/4	42.2	42.7	57	12.7	22.4
	1-1/2	48.3	48.8	64	12.7	23.9
	2	60.3	61.2	76	15.8	23.9
	2-1/2	73.2	73.9	92	15.8	25.4
	3	88.9	89.8	109.2	15.8	30.2
	4	114.3	115.2	140	19.1	30.2

Straight way						
ORDER ITEM	Outlet Pipe (in)	C	D	F	J (Min)	E ⁽¹⁾

3000Lb						
	1/4	11.5	14.2	22.0	9.7	10.4
	3/8	14.5	17.6	25.9	9.7	12.7
	1/2	16.5	21.8	31.4	9.7	16.0
	3/4	21.5	27.2	37.1	12.7	16.0
	1	27.2	33.9	45.5	12.7	22.4
	1-1/4	36.0	42.7	57.0	12.7	22.4
	1-1/2	42.0	48.8	64.0	12.7	23.9
	2	53.0	61.2	76.0	15.8	23.9
	2-1/2	65.0	73.9	92.0	15.8	25.4
	3	80.0	89.8	109.2	15.8	30.2
	4	104.0	115.2	140.0	19.1	30.2

(1) Socket Dimension in Accordance with ASME B16.11

6000Lb (S160)

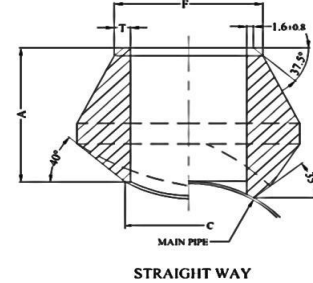
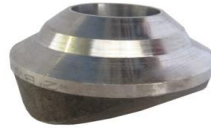
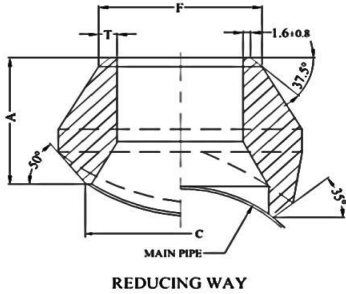
	1/2	16.6	21.8	38	9.7	23.9
	3/4	21.2	27.2	44	12.7	25.4
	1	27	33.9	57	12.7	28.7
	1-1/4	35.8	42.7	64	12.7	30.2
	1-1/2	41.2	48.8	76	12.7	31.8
	2	51.6	61.2	92	15.8	36.6

(1) Socket Dimension in Accordance with ASME B16.11
 (2) 3000LB Outlet size 4 and less fit a number of run pipe sizes and the fittings are market accordingly
 See page 33 for conventional run size combination.

BUTT WELDING END BRANCH OUTLET

MSS SP -97-2006

Standard Weight



Dimensions in Millimeters.

Reducing way					
ORDER ITEM	Outlet Pipe (in)	A	C	F	T
	1/8	16.0	13.7	10.3	1.73
	1/4	16.0	13.7	13.7	2.24
	3/8	19.0	17.1	17.1	2.31
	1/2	19.0	21.3	21.3	2.77
	3/4	22.0	26.7	26.7	2.87
	1	27.0	33.4	33.4	3.38
	1-1/4	32.0	42.2	42.2	3.56
	1-1/2	33.0	48.3	48.3	3.68
	2	38.0	60.3	60.3	3.91
	2-1/2	41.0	73.0	73.0	5.16
	3	44.0	88.9	88.9	5.49
	3-1/2	48.0	101.6	101.6	5.74
	4	51.0	114.3	114.3	6.02
	5	57.0	141.3	141.3	6.55
	6	60.0	168.3	168.3	7.11
	8	70.0	219.3	219.3	8.11
	10	78.0	273.1	273.1	9.27
	12	86.0	323.9	323.9	9.53
	14	89.0	355.6	355.6	9.53
	16	94.0	406.4	406.4	9.53
	18	97.0	457.2	457.2	9.53
	20	102.0	508	508	9.53
	24	116.0	609.6	609.6	9.53

Dimensions in Millimeters.

Straight way					
ORDER ITEM	Outlet Pipe (in)	A	C	F	T
	1/4	16.0	11.5	13.7	2.24
	3/8	19.0	14.5	17.1	2.31
	1/2	19.0	16.5	21.3	2.77
	3/4	22.0	21.5	26.7	2.87
	1	27.0	27.2	33.4	3.38
	1-1/4	32.0	36	42.2	3.56
	1-1/2	33.0	42	48.3	3.68
	2	38.0	53	60.3	3.91
	2-1/2	41.0	65	73	5.16
	3	44.0	80	88.9	5.49
	4	51.0	104	114.3	6.02

(1) Weld Bevel in Accordance with ASME B16.25

DIMENSIONAL TOLERANCE

MSS SP-97-2006

Unit :m/m

Item	1/8"~3/4"	1"~4"	5"~12"	14"~24"
Face of fitting to Cortch(A)	+2	+3	+5	+7
	-0.76	-1.52	-3.05	-4.83

- (1) Weld Bevel in Accordance with ASME B16.25.
- (2) Outlet size 4 and less fit a number of run pipe sizes and the fittings are marked accordingly.
See page 33 for conventional run size combination.
- (3) Outlet sizes 5 and up order to specific size combination.

info@parsregulator.com
parsregulator@yahoo.com

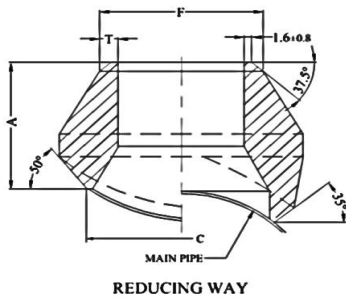
www.parsregulator.com

Tel : 88 30 77 66
Fax: 88 83 41 40

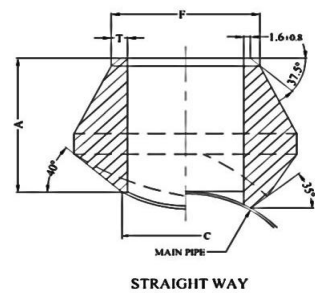
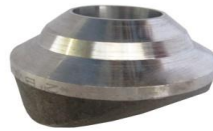
PIPE FITTINGS

BUTT WELDING END BRANCH OUTLET

MSS SP -97-2006
XTRA STORNG



REDUCING WAY



STRAIGHT WAY

Dimensions in Milimeters.

Reducing way					
ORDER ITEM	Outlet Pipe (in)	A	C	F	T
	1/8	16.0	13.7	10.3	2.41
	1/4	16.0	13.7	13.7	3.02
	3/8	19.0	17.1	17.1	3.20
	1/2	19.0	21.3	21.3	3.73
	3/4	22.0	26.7	26.7	3.91
	1	27.0	33.4	33.4	4.55
	1-1/4	32.0	42.2	42.2	4.85
	1-1/2	33.0	48.3	48.3	5.08
	2	38.0	60.3	60.3	5.54
	2-1/2	41.0	73.0	73.0	7.01
	3	44.0	88.9	88.9	7.62
	3-1/2	48.0	101.6	101.6	8.56
	4	51.0	114.3	114.3	8.56
	5	57.0	141.3	141.3	9.53
	6	78.0	168.3	168.3	10.97
	8	99.0	219.3	219.3	12.7
	10	94.0	273.1	273.1	12.7
	12	103.0	323.9	323.9	12.7
	14	100.0	355.6	355.6	12.7
	16	106.0	406.4	406.4	12.7
	18	111.0	457.2	457.2	12.7
	20	119.0	508	508	12.7
	24	140.0	609.6	609.6	12.7

Dimensions in Milimeters.

Straight way					
ORDER ITEM	Outlet Pipe (in)	A	C	F	T
	1/4	16.0	11.5	13.7	3.02
	3/8	19.0	14.5	17.1	3.20
	1/2	19.0	16.5	21.3	3.73
	3/4	22.0	21.5	26.7	3.91
	1	27.0	27.2	33.4	4.55
	1-1/4	32.0	36.0	42.2	4.85
	1-1/2	33.0	42.0	48.3	5.08
	2	38.0	53.0	60.3	5.54
	2-1/2	41.0	65.0	73	7.01
	3	44.0	80.0	88.9	7.62
	4	51.0	104.0	114.3	8.56

(1) Weld Bevel in Accordance with ASME B16.25

DIMENSIONAL TOLERANCE

MSS SP-97-2006

Unit :m/m

Item	1/8"~3/4"	1"~4"	5"~12"	14"~24"
Face of fitting to Cortch(A)	+2 -0.76	+3 -1.52	+5 -3.05	+7 -4.83

P
I
P
E
F
I
T
T
I
N
G
S

info@parsregulator.com
Parsregulator@yahoo.com

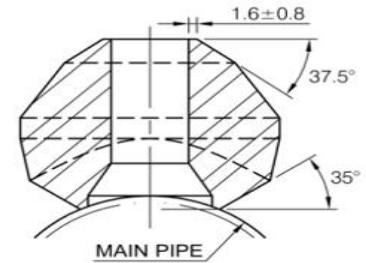
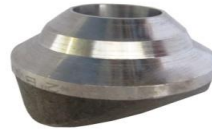
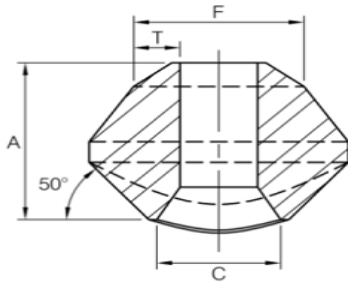
www.parsregulator.com

Tel : 88 30 77 66
Fax: 88 83 41 40

- (1) Weld Bevel in Accordance with ASME B16.25.
- (2) Outlet size 4 and less fit a number of run pipe sizes and the fittings are marked accordingly.
- See page 33for conventional run size combination.
- (3) Outlet sizes 5 and up order to specific size combination.

BUTT WELDING END BRANCH OUTLET

Schedule 160 & Double Extra Strong
MSS SP -97-2006



Dimensions in Millimeters.

Reducing way						
ORDER ITEM	Outlet Pipe (in)	A	C	F	T	
					S160	XXS
	1/2	28.0	13.8	21.3	4.78	7.47
	3/4	32.0	18.9	26.7	5.56	7.82
	1	38.0	24.3	33.4	6.35	9.09
	1-1/4	44.0	32.5	42.2	6.35	9.70
	1-1/2	51.0	38.1	48.3	7.14	10.15
	2	55.0	49.2	60.3	8.74	11.07
	2-1/2	62.0	59.0	73.0	9.53	14.02
	3	73.0	73.7	88.9	11.13	15.24
	4	84.0	97.2	114.3	13.49	17.12
	5	94.0	122.2	141.3	15.88	19.05
	6	105.0	146.4	168.3	18.26	21.95

- (1) Weld Bevel in Accordance with ASME B16.25
- (2) Outlet size by order to specific size combination.

CONVENTIONAL RUN SIZE COMBINATIONS 3000# THREAD/ SOCKET-WELD END STD/ XS BUTT WELDING END

		OUTLET SIZE										
		1/4"	3/8"	1/2"	3/4"	1"	1-1/4"	1-1/2"	2"	2-1/2"	3"	4"
RUN SIZE (MAIN PIPE)	Reducing way	3/8"~3/4" 1"~36"	1/2" 3/4"~1-1/4" 1-1/2"~36"	3/4" 1" 1-1/4" 1-1/2"~3" 3-1/2"~36"	1" 1-1/4" 1-1/2" 2"~3" 3-1/2"~6" 8"~36"	1-1/4" 1-1/2" 2" 2-1/2" 3" 3-1/2"~4" 5"~10" 12"~36"	1-1/2" 2" 2-1/2" 3" 3-1/2"~5" 6"~8" 10"~36"	2" 2-1/2" 3" 3-1/2" 4"~5" 6"~8" 10"~36"	2-1/2" 3" 3-1/2" 4" 5"~6" 8"~10" 12"~18" 20"~36"	3" 3-1/2" 4" 5" 6" 8" 10" 12"~14" 16"~36"	3-1/2" 4" 5" 6" 8" 10" 12"~16" 18"~36"	5" 6" 8" 10" 12"~14" 16"~18" 20"~24" 26"~36"
	Straight way	3/8"~36"	1/2"~36"	3/4"~36"	1"~36"	1-1/4"~1-1/2" 2"~36"	1-1/2" 2"~3" 3-1/2"~36"	2" 2-1/2"~4" 5"~36"	2-1/2" 3"~3-1/2" 4"~6" 8"~36"	3" 3-1/2"~4" 5"~8" 10"~36"	3-1/2" 4" 5" 6" 8"~12" 14"~36"	5" 6" 8" 10" 12"~16" 18"~36"

Each Charted outlet size are designed to fit a number of run pipe size.

PIPE FITTINGS

MARKING

REMARK:

This marking method is used for variety of flanges, nuts, unions and piping fitting, but is not limited to mentioned items. Marking should be done on body or name plates of items based on MSS SP -25 standard (for any size, any different kinds of material).

Marking order is as follows

1. Manufacturer's name or brand
2. Working class/schedule
3. Material
4. Heat No. or heat code
5. Size
6. Standard

Exceptions:

- B16 & B16.11 are equivalent.
- NACE & NACE MR-0175 are equivalent.

Sample of acceptable markings are as following table.

ROW	SAMPLE	MARKING
1	NIPPLE	PR ½ S80 A 106-B 1478
2	SWAGE NIPPLE	PR SP-95 ¾x1/2 S160XS40 A105N 3218
3	ELBOW	PR B16 ¾ 3M A 182 F304L 1178
4	TEE	PR B16 1 3M A/SA182 F316L 4581
5	PLUG	PR B16 1.1/2 A 105N 1479
6	CAP	PR B16 1.1/2 3M A182 F321 1479
7	HEX BOUSHING	PR B16 ¾x1/2 A 105N 3218
8	COUPLING	PR B16 ½ 3M A 182 F316L 4169
9	SOCKOLET	PR SP-97 2x3-36 6M A 105N 3214
10	WELDOLET	PR SP-97 1x2-36 S80 A 105N 1475
11	THREDOLET	PR SP-97 1/2x1-36 3M A 105N 8812
12	REDUCER INSERT	PR SP-79 1x3/4 3M A 105N 3119
13	UNION	PR SP-83 ¾ 3M A 105N 3315
14	FLANGE WN	PR FLANGE B16.5 WN 4" SCH40 RF CL150 A 105N 2691
15	FLANGE BL WITH HOLE	PR FLANGE B16.5 BL 1x3/4 RF CL300 A 182 F316L 7164
16	CONDENSATE POT	W1 PR 3x1/2 SCH:160 A106-B 1478 S/N:001 W2

WEIGHT LIST

Unit: KG

SIZE NPS	90 ELBOW					45 ELBOW					Tee				
	2M	3M	3M	6M	6M	2M	3M	3M	6M	6M	2M	3M	3M	6M	6M
	NPT	SW	NPT	SW	NPT	NPT	SW	NPT	SW	NPT	NPT	SW	NPT	SW	NPT
1/8"	0.1	0.09	0.10	-	0.17	0.14	0.16	0.13	-	0.11	0.13	0.13	0.13	0.14	0.20
1/4"	0.08	0.08	0.14	-	0.33	0.13	0.14	0.12	-	0.27	0.12	0.09	0.20	0.20	0.45
3/8"	0.13	0.12	0.29	0.29	0.45	0.10	0.12	0.24	-	0.39	0.17	0.15	0.38	0.43	0.63
1/2"	0.25	0.22	0.43	0.40	0.80	0.20	0.20	0.34	0.36	0.63	0.31	0.29	0.56	0.56	0.98
3/4"	0.35	0.33	0.69	0.73	1.31	0.27	0.28	0.56	0.57	1.07	0.43	0.42	0.92	0.94	1.65
1"	0.53	0.53	1.14	1.17	1.61	0.41	0.42	0.94	0.92	1.27	0.69	0.65	1.49	1.49	2.17
1-1/4"	0.82	0.84	1.42	1.48	2.93	0.68	0.69	1.03	1.11	2.24	1.07	1.04	1.76	1.93	3.74
1-1/2"	1.06	1.08	2.63	2.79	3.79	0.82	0.80	2.05	2.01	2.54	1.39	1.35	3.27	3.37	4.71
2"	1.7	1.68	2.92	3.28	7.31	1.41	1.35	2.23	2.09	4.37	2.16	2.04	3.53	3.95	7.88
2-1/2"	3.14	3.2	5.99	-	9.88	3.46	2.53	3.71	-	7.01	4.11	3.98	6.99	-	13.11
3"	4.81	5.38	8.88	-	16.43	5.44	5.1	5.97	-	14.16	6.12	5.90	10.19	-	22.5
4"	10.21	10.95	14.85	-	-	8.96	9.41	8.96	-	-	14.74	17.91	19.13	-	-

SIZE NPS	Cross				Full Coupling				Half Coupling			
	2M	3M	3M	6M	3M	3M	6M	6M	3M	3M	6M	6M
	NPT	SW	NPT	SW	SW	NPT	SW	NPT	SW	NPT	SW	NPT
1/8"	-	0.57	0.56	-	0.04	0.05	0.05	0.08	0.04	0.02	-	0.07
1/4"	-	0.53	0.52	-	0.05	0.04	-	0.13	0.05	0.02	0.11	0.06
3/8"	-	0.46	0.49	-	0.07	0.06	0.14	0.20	0.07	0.03	-	0.09
1/2"	0.40	0.39	0.65	0.69	0.13	0.13	0.24	0.34	0.13	0.06	0.21	0.16
3/4"	0.51	0.48	1.05	-	0.17	0.19	0.27	0.50	0.21	0.10	0.31	0.24
1"	0.77	0.75	1.70	-	0.29	0.45	0.44	0.87	0.30	0.23	0.51	0.45
1-1/4"	1.11	1.19	2.17	-	0.45	0.81	0.60	1.09	0.34	0.34	0.75	0.55
1-1/2"	1.62	1.61	3.93	-	0.59	1.07	1.11	1.94	0.66	0.54	1.25	0.96
2"	-	2.35	4.39	-	0.86	1.40	1.62	2.87	1.09	0.70	1.92	1.70
2-1/2"	-	-	-	-	1.40	2.29	-	4.20	1.63	1.13	-	2.10
3"	-	-	-	-	1.78	3.38	-	6.10	2.10	1.68	-	3.05
4"	-	-	20.97	-	2.85	6.28	-	10.04	3.71	3.11	-	5.02

SIZE NPS	Reducing Coupling				Cap				Union	
	3M	3M	6M	6M	3M	3M	6M	6M	3M	3M
	SW	NPT	SW	NPT	SW	NPT	SW	NPT	SW	NPT
1/8"	0.04	0.05	-	0.08	0.03	0.02	-	0.06	0.28	0.28
1/4"	0.05	0.05	-	0.06	0.04	0.04	-	0.06	0.28	0.28
3/8"	0.07	0.06	-	0.18	0.07	0.05	-	0.09	0.25	0.24
1/2"	0.13	0.13	0.24	0.31	0.10	0.11	0.16	0.26	0.35	0.34
3/4"	0.19	0.19	0.33	0.41	0.16	0.18	0.23	0.40	0.49	0.48
1"	0.27	0.39	0.65	0.85	0.25	0.37	0.36	0.71	0.81	0.77
1-1/4"	0.49	0.68	0.75	1.05	0.45	0.62	0.64	0.90	1.10	1.03
1-1/2"	0.59	0.99	1.20	1.81	0.59	0.72	0.94	1.28	1.61	1.63
2"	0.97	1.37	2.12	3.40	0.96	1.09	1.41	2.23	2.16	2.43
2-1/2"	1.42	2.07	-	4.20	1.43	2.22	-	-	3.50	3.63
3"	1.88	3.08	-	6.10	2.74	3.50	-	-	5.15	5.27
4"	3.31	5.44	-	10.04	4.24	4.84	-	-	11.59	12.00

SIZE NPS	Street Elbow	Hex Nipple	Square Head Plug	Hex Head Plug	Round Head Plug	Bushing
	3M NPT	3M NPT				
1/8"	0.13	0.03	0.01	0.01	0.02	-
1/4"	0.11	0.04	0.01	0.03	0.05	0.01
3/8"	0.22	0.05	0.03	0.05	0.07	0.01
1/2"	0.31	0.09	0.05	0.07	0.12	0.03
3/4"	0.53	0.15	0.09	0.14	0.20	0.05
1"	1.02	0.47	0.16	0.22	0.34	0.09
1-1/4"	1.13	0.45	0.27	0.44	0.55	0.25
1-1/2"	2.01	0.62	0.38	0.59	0.79	0.34
2"	2.91	1.03	0.63	1.03	1.47	0.45
2-1/2"	-	1.51	0.96	1.80	2.34	0.60
3"	-	2.22	1.53	2.60	3.26	1.16
4"	-	4	3.83	5.20	6.24	3.20

E-MAIL : info@parsregulator.com
Parsregulator@yahoo.com

www.parsregulator.com

Tel : 88 30 77 66
Fax: 88 83 41 40

P
I
P
E
F
I
T
T
I
N
G
S

PACKING LIST

Unit: PC

SIZE NPS	90 ELBOW				45 ELBOW				Tee				
	2M NPT	3M	6M	6M	2M NPT	3M	6M	6M	2M NPT	3M	6M	6M	9M
	3M SW	NPT	SW	NPT	3M SW	NPT	SW	NPT	3M SW	NPT	SW	NPT	SW
1/4"	150	100	100	80	150	100	100	80	100	80	80	50	-
3/8"	100	80	80	50	100	80	80	50	80	50	50	35	-
1/2"	80	50	50	25	80	50	50	25	50	35	35	20	25
3/4"	50	25	25	20	50	30	30	20	35	20	20	12	15
1"	30	20	20	12	30	20	20	12	20	15	15	10	10
1-1/4"	20	15	15	5	20	15	15	5	15	10	10	5	6
1-1/2"	15	6	6	4	15	8	8	4	10	5	5	4	4
2"	8	5	5	2	10	6	6	2	6	4	4	2	2
2-1/2"	4	2	2	1	5	2	2	-	3	2	2	1	-
3"	2	2	-	-	2	2	-	-	2	1	1	-	-
4"	1	1	-	-	1	1	-	-	1	1	1	-	-

SIZE NPS	Cross				Full Coupling				Half Coupling			
	2M NPT	3M	6M	6M	3M	3M	6M	6M	3M	3M	6M	6M
	3M SW	NPT	SW	NPT	SW	NPT	SW	NPT	SW	NPT	SW	NPT
1/4"	40	40	80	40	350	250	250	200	400	800	300	150
3/8"	40	40	40	30	250	200	200	100	250	500	150	80
1/2"	40	30	30	20	120	100	100	60	120	250	80	80
3/4"	30	20	20	12	80	70	70	35	80	150	50	50
1"	20	12	12	6	50	35	35	20	50	80	30	35
1-1/4"	10	6	6	4	30	20	20	15	30	350	25	25
1-1/2"	6	4	4	2	25	15	15	10	25	30	15	20
2"	4	4	2	1	15	10	10	5	15	20	10	6
2-1/2"	2	1	-	-	10	5	5	3	10	12	-	4
3"	1	1	-	-	6	3	3	2	6	6	-	2
4"	-	1	-	-	4	2	2	1	4	4	-	1

SIZE NPS	Cap			Boss				Street Elbow		Insert	
	3M	6M	6M	3M	3M	6M	6M	3M	6M	3M	6M
	SW/NPT	SW	NPT	SW	NPT	SW	NPT	NPT	NPT	SW	SW
1/4"	300	200	250	250	200	200	150	150	80	300	250
3/8"	250	150	130	200	150	150	100	80	50	300	200
1/2"	130	80	80	90	80	80	60	50	25	150	120
3/4"	80	50	50	70	40	40	35	30	20	100	80
1"	50	30	30	35	30	30	20	20	12	80	60
1-1/4"	30	25	25	30	20	20	15	150	5	60	50
1-1/2"	25	15	15	25	15	15	10	8	4	40	40
2"	15	8	10	15	10	10	5	5	2	25	20
2-1/2"	10	5	4	-	-	-	-	4	-	12	10
3"	4	3	3	-	-	-	-	2	-	10	8
4"	3	2	2	-	-	-	-	1	-	4	2

SIZE NPS	OutLet		Union		Hex Plug NPT	Round Plug NPT	Square Plug NPT	Bushing NPT	Hex Nipple NPT	Swage Nipple S40/S80 S160/XXS
	3M	6M	3M	3M						
	SW/NPT	SW/NPT	SW/NPT	SW/NPT						
1/4"	200	100	70	100	800	250	800	600	500	200
3/8"	150	100	70	100	600	200	500	500	400	150
1/2"	150	100	50	100	250	150	300	400	200	100
3/4"	100	50	30	50	150	100	200	200	100	70
1"	50	30	20	30	100	80	150	100	65	50
1-1/4"	35	25	14	25	35	50	80	60	35	30
1-1/2"	25	15	10	15	25	30	50	50	25	20
2"	15	10	6	10	20	20	30	25	15	8
2-1/2"	10	-	3	-	8	10	15	15	5	4
3"	6	-	2	-	6	5	10	10	3	3
4"	3	-	-	-	3	3	3	5	2	1

WOODEN CASE SIZE : 102×86×72 cm/60 CARTON
WOODEN CASE SIZE : 86×82×72 cm/48 CARTON
WOODEN CASE SIZE : 86×82×72 cm/36 CARTON



Pars Regulator Co.



شرکت پارس رگولاتور

THICKNESS

THICKNESS

unit:m/m

TOLERANCES			NPS IN	STEEL PIPE																ST.ST.PIPE			
A53 A106 O.D	API 5L O.D	A530 O.D		Outside Dia.			WALL THICKNESS													WALL THICKNESS			
				STD	MAX	MIN	S/10	S/20	S/30	S/40	STD	S/60	XS	S/80	S/100	S/120	S/140	S/160	XXS	S/5S	S/10S	S/40S	S/80S
+1/64" -1/32"	+1/64" -1/32"	+1/64" -1/32"	1/8	10.3	10.7	9.5	1.24	-	1.45	1.73	S/40	-	S/80	2.41	-	-	-	*3.15	*4.83	1.7	1.2	1.7	2.4
			1/4	13.7	14.1	12.9	1.65	-	1.85	2.24	S/40	-	S/80	3.02	-	-	-	*3.68	*6.05	1.7	1.7	2.2	3.0
			3/8	17.1	17.5	16.3	1.65	-	1.85	2.31	S/40	-	S/80	3.20	-	-	-	*4.01	*6.40	1.7	1.7	2.3	3.2
			1/2	21.3	21.7	20.5	2.11	-	2.41	2.77	S/40	-	S/80	3.73	-	-	-	4.78	7.47	1.7	2.1	2.8	3.7
			3/4	26.7	27.1	25.9	2.11	-	2.41	2.87	S/40	-	S/80	3.91	-	-	-	5.56	7.82	1.7	2.1	2.9	3.9
			1	33.4	33.8	32.8	2.77	-	2.97	3.38	S/40	-	S/80	4.55	-	-	-	6.35	9.09	1.7	2.8	3.4	4.5
			1-1/4	42.2	42.6	41.4	2.77	-	2.97	3.56	S/40	-	S/80	4.85	-	-	-	6.35	9.70	2.1	2.8	3.6	4.9
			1-1/2	48.3	48.7	47.5	2.77	-	3.18	3.68	S/40	-	S/80	5.08	-	-	-	7.14	10.15	2.1	2.8	3.7	5.1
			2	60.3	60.9	59.7	2.77	-	3.18	3.91	S/40	-	S/80	5.54	-	-	-	8.74	11.07	2.1	2.8	3.9	5.5
			2-1/2	73.0	73.7	72.2	3.05	-	4.78	5.16	S/40	-	S/80	7.01	-	-	-	9.53	14.02	2.1	3.0	5.2	7.0
± 1%	±0.75%	+1/32"	3	88.9	89.8	88.0	3.05	-	4.78	5.49	S/40	-	S/80	7.62	-	-	-	11.13	15.24	2.8	3.0	5.5	7.6
			3-1/2	101.6	102.6	100.6	3.05	-	4.78	5.74	S/40	-	S/80	8.08	-	-	-	-	-	2.8	3.0	5.7	8.1
			4	114.3	115.4	113.2	3.05	-	4.78	6.02	S/40	-	S/80	8.56	-	11.13	-	13.49	17.12	2.8	3.0	6.0	8.6
			5	141.3	142.7	139.9	3.40	-	-	6.55	S/40	-	S/80	9.53	-	12.70	-	15.88	19.05	3.4	3.4	6.6	9.5
			6	168.3	170.0	166.6	3.40	-	-	7.11	S/40	-	S/80	10.97	-	14.27	-	18.26	21.95	4.0	3.4	7.1	11.0
			8	219.1	221.3	216.9	3.76	6.35	7.04	8.18	S/40	10.31	S/80	12.70	15.09	18.26	20.62	23.01	22.23	4.0	3.8	8.2	12.7
			10	273.0	275.8	270.4	4.19	6.35	7.80	9.27	S/40	12.70	S/60	15.09	18.26	21.44	25.40	28.58	S/140	4.2	4.2	9.3	12.7
			12	323.8	327.1	320.7	4.57	6.35	8.38	10.31	9.53	14.27	12.70	17.48	21.44	25.40	28.58	33.32	S/120	4.2	4.6	9.5	12.7
			14	355.6	359.2	352.0	6.35	7.92	9.53	11.13	S/30	15.09	12.70	19.05	23.83	27.79	31.75	35.71	-	4.8	-	-	-
			16	406.4	410.5	402.3	6.35	7.92	9.53	12.70	S/30	16.66	S/40	21.44	26.19	30.96	36.53	40.49	-	4.8	-	-	-
+0.15% -0.25%	+1/8" -1/32"	+1/8" -1/32"	18	457.0	461.8	452.6	6.35	7.92	11.13	14.27	9.53	19.05	12.70	23.83	29.36	34.93	39.67	45.24	-	5.5	6.4	-	-
			20	508.0	513.1	502.9	6.35	9.53	12.70	15.09	S/20	20.62	S/30	26.19	32.54	38.10	44.45	50.01	-	-	-	-	
			22	559.0	-	-	6.35	9.53	12.70	-	S/20	22.23	S/30	28.58	34.93	41.28	47.63	53.98	-	-	-	-	
			24	610.0	615.7	603.5	6.35	9.53	14.27	17.48	S/20	24.61	12.70	30.96	38.89	46.02	52.37	59.54	-	6.4	7.9	-	-
			26	660.0	-	-	7.92	12.70	-	-	9.53	-	S/20	-	-	-	-	-	-	-	-	-	
			28	711.0	-	-	7.92	12.70	15.88	-	9.53	-	S/20	-	-	-	-	-	-	-	-	-	
			30	762.0	-	-	7.92	12.70	15.88	-	9.53	-	S/20	-	-	-	-	-	-	-	-	-	
			32	813.0	-	-	7.92	12.70	15.88	17.48	9.53	-	S/20	-	-	-	-	-	-	-	-	-	
			34	864.0	-	-	7.92	12.70	15.88	17.48	9.53	-	S/20	-	-	-	-	-	-	-	-	-	
			36	914.0	-	-	7.92	12.70	15.88	19.05	9.53	-	S/20	-	-	-	-	-	-	-	-	-	

*The Thickness in accordance with ASME B16.11

info@parsregulator.com
parsregulator@yahoo.com

www.parsregulator.com

Tel : 88 30 77 66
Fax: 88 83 41 40

P
I
P
E
F
I
T
T
I
N
G
S

info@parsregulator.com
E-MAIL : Parsregulator@yahoo.com

www.parsregulator.com

Tel : 88 30 77 66
Fax: 88 83 41 40

PICTURE



P
I
P
E
F
I
T
T
I
N
G
S



PARS REGULATOR CO.

PIPE FITTINGS , FLANGES , VALVES , PIPE & TUBE
STAINLESS STEEL , CARBON STEEL & ALLOY STEEL



ISO 9001-2008



بیمه نامه مسئولیت مدنی تولید کنندگان کالا
در قبال مصرف کنندگان

- 90 ELBOW
- 45 ELBOW
- TEE
- CROSS
- COUPLING
- HALF COUPLING
- CAP
- UNION
- PLUG
- HEX BUSHING
- HEX NIPPLE
- PIPE NIPPLE
- SWAGE NIPPLE
- THREADOLET
- SOCKOLET
- WELEDOLET

Head Office : 2nd. Floor, No. 46, Karimkhan St., Tehran-Iran

Tel: +9821 88 30 77 66 Fax: +9821 88 83 41 40

WWW.PARSREGULATOR.COM INFO@PARSREGULATOR.COM PARSREGULATOR@YAHOO.COM

Factory #1: No.263 , West Danesh St. , Sarasiab Malard , Karaj-Iran

Tel.: +9821 65 16 20 25 Fax: +9821 65 16 20 24

Factory #2: No.1525 , Kabutar 412 St. Dorna Blvd. , Ebne Sina Blvd. Abbas Abad Industrial Zone , Pakdasht-Iran

Tel.: +9821 36 42 49 75 Fax: +9821 36 42 49 78